

06-24-039-000

202806

G-40

NOTE: THIS PREPARED FROM SURVEYS BY RAY E. HOLLIS (D.V. 1111 P. 67) & J.R. FOOR & ASSOC. IN JULY 1974. NO PINS HAVE BEEN SET BY KS ASSOC. INC.

GRISWOLD ROAD 60'

BRACE TR. TR. W. OF RIVER

202806

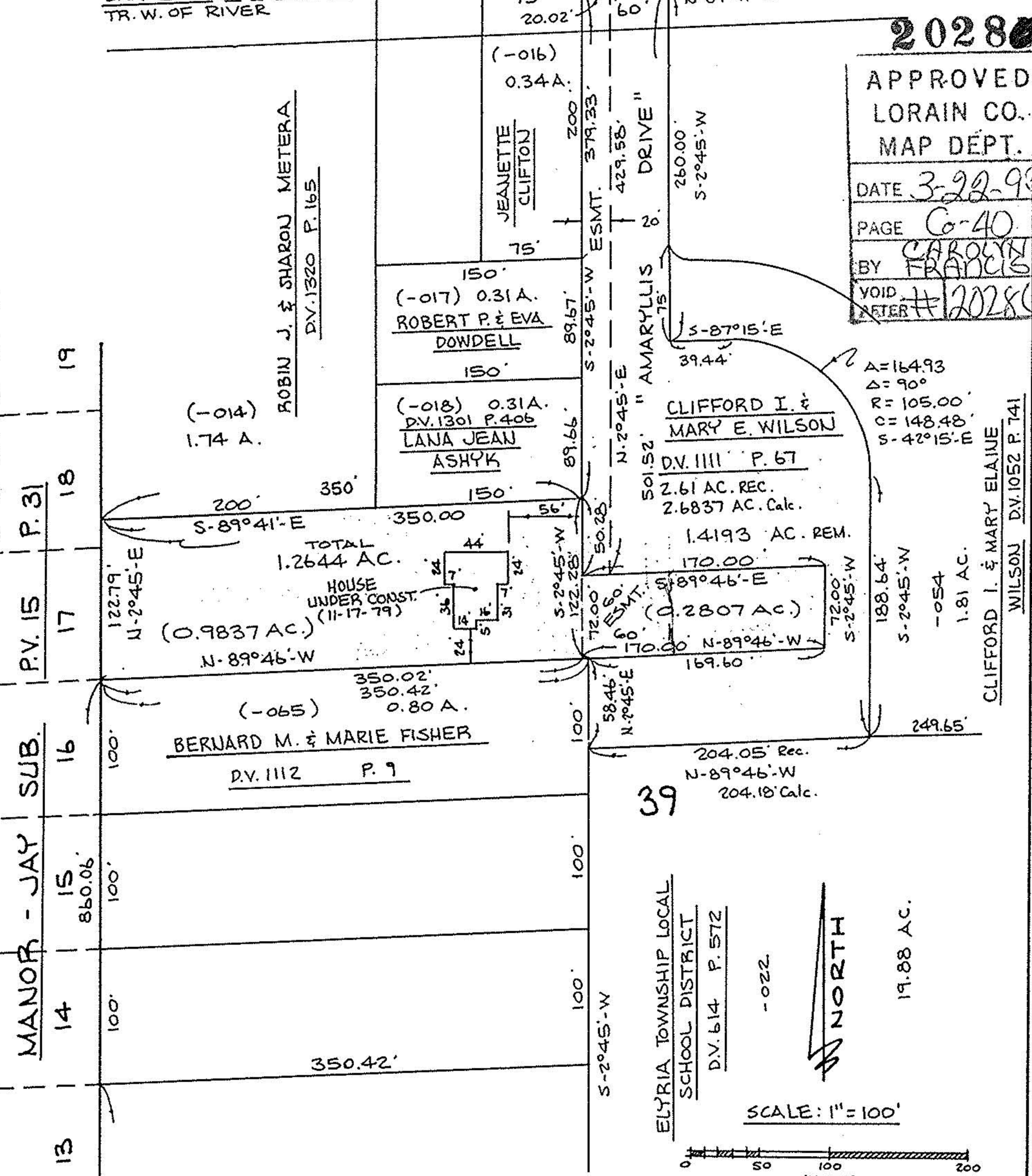
APPROVED LORAIN CO. MAP DEPT.

DATE 3-22-93

PAGE G-40

BY CAROLYN FRANCIS

VOID AFTER #202806



SURVEY MAP

PART OF ELYRIA TOWNSHIP ORIGINAL LOT NO. 39 - TRACT W. OF RIVER

TOWNSHIP OF ELYRIA COUNTY OF LORAIN

STATE OF OHIO

PREPARED BY

KS ASSOCIATES INC.

ENGINEERS

SURVEYORS

REV. 1-04-93

REV. 1-14-93

REV. 1-08-93

92-496A

David L. Elwell
REG. SURV. NO. 6333
11-19-92 REV. 12-16-92

