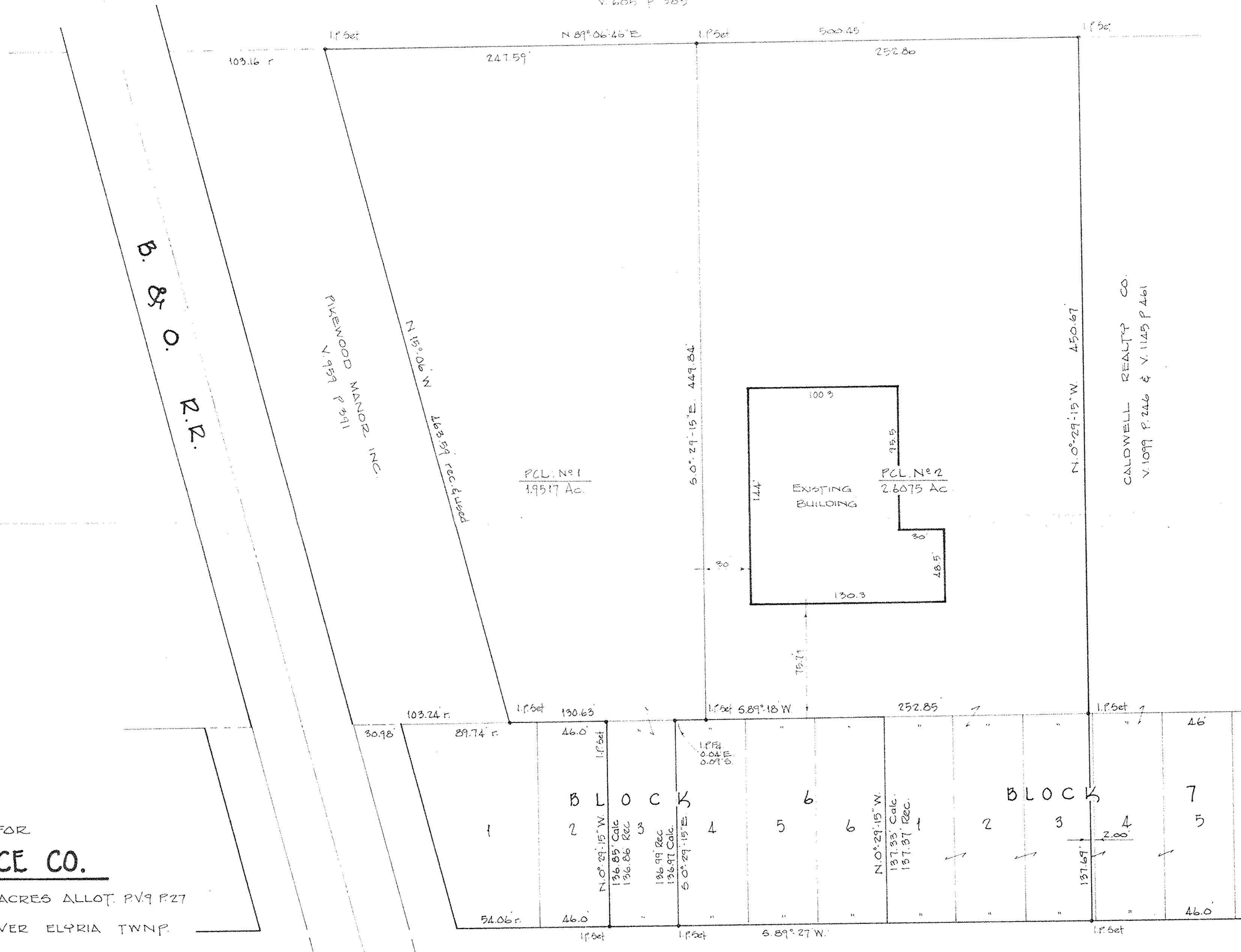


PIKEWOOD MANOR, INC.  
V. 605 P. 385



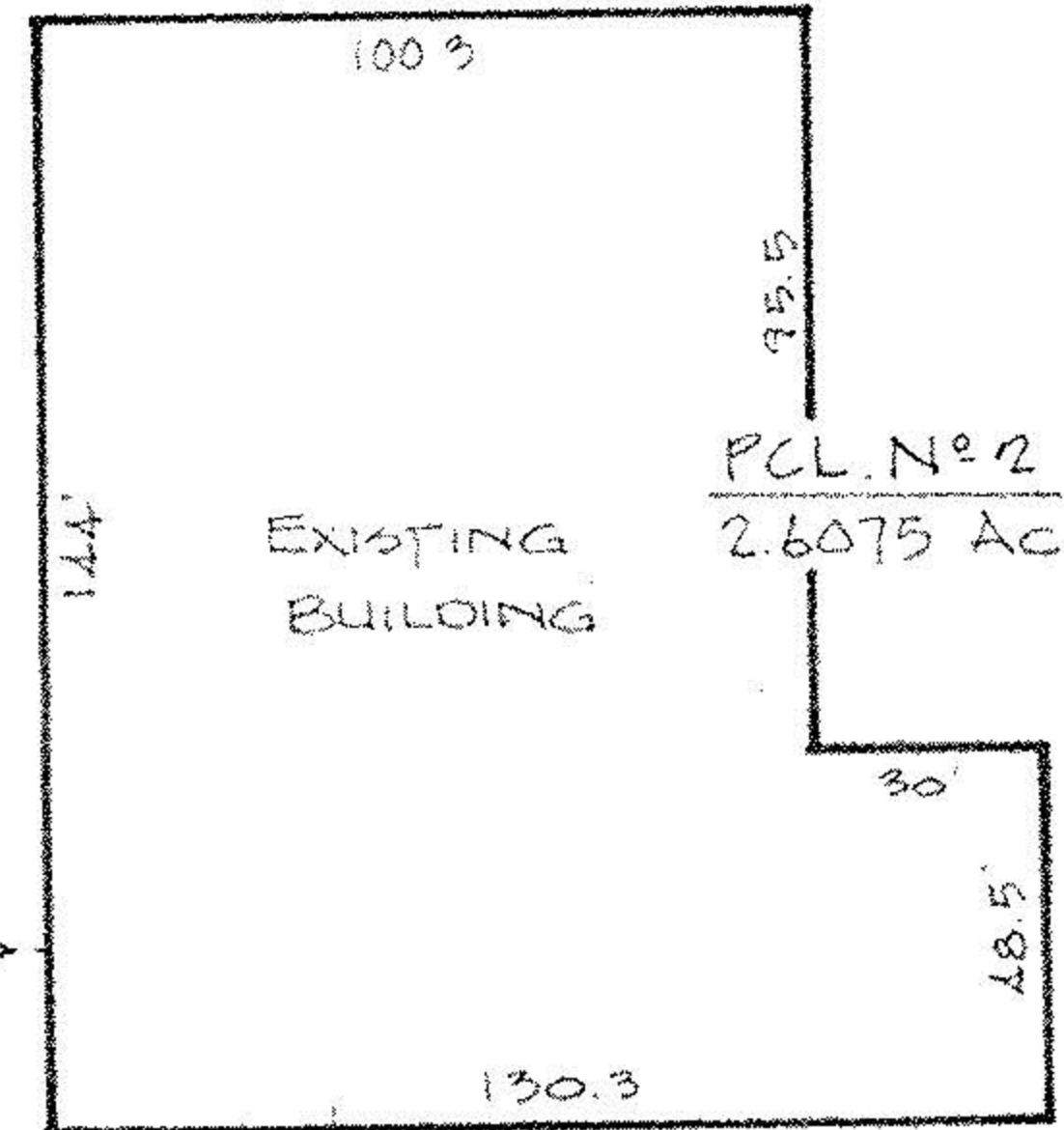
B. & O. R.R.

PIKEWOOD MANOR, INC.  
V. 458 P. 541

CALDWELL REALTY CO.  
V. 1079 P. 246 & V. 1145 P. 461

PCL. No 1  
1.9517 Ac.

PCL. No 2  
2.6075 Ac.



OCT 12 SURVEY FOR  
**MAPLE CITY ICE CO.**

S/L 3 BLOCK 6 IN GARDEN ACRES ALLOT. P.V. 9 P. 27  
AND PART OF D.L. 34 WEST OF RIVER ELYRIA TWP.  
CITY OF ELYRIA COUNTY OF LORAIN STATE OF OHIO

SCALE 1"=50' OCT. 1985  
LAUNDON • SIMON • CAHL & ASSOC.  
ENGINEERS SURVEYORS

#18670

APPROVED  
LORAIN CO.  
MAP DEPT.  
DATE 10-12-89  
PAGE 6-62  
BY C. E. FRANCIS  
VOID AFTER 18670

JOB No 85-1434