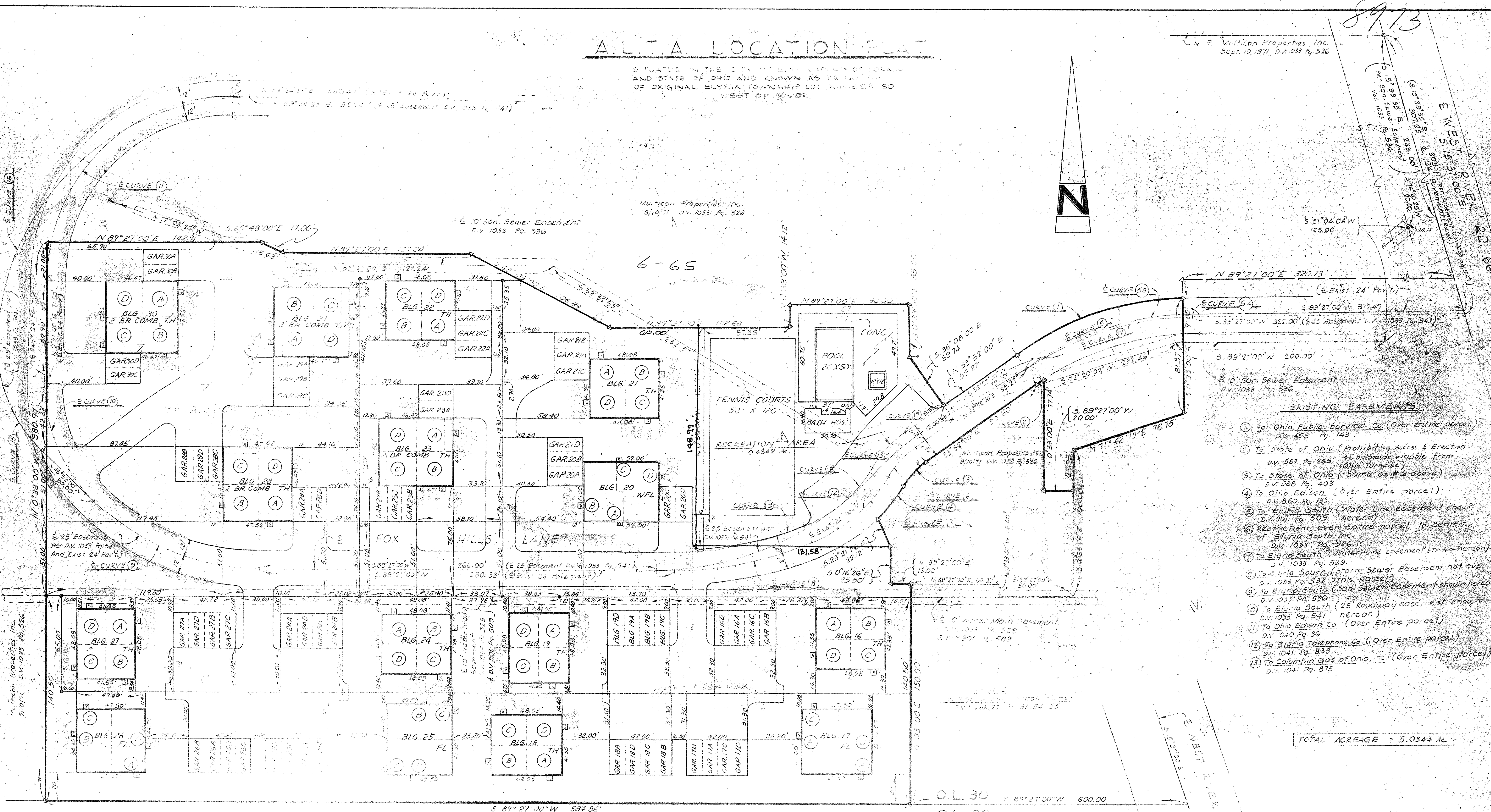


A.L.T.A. LOCATION PLAT

SITUATED IN THE CITY OF ELYRIA COUNTY OF LORAIN AND STATE OF OHIO AND KNOWN AS PARCELS OF ORIGINAL ELYRIA TOWNSHIP LOT NUMBER 50 WEST OF RIVER.

C.N.R. Multicon Properties, Inc.
Sept. 10, 1971, D.V. 1033 Pg. 526



- EXISTING EASEMENTS**
- To Ohio Public Service Co. (Over entire parcel) D.V. 455 Pg. 143.
 - To State of Ohio (Prohibiting Access & Erection D.V. 567 Pg. 269 of billboards visible from Ohio Turnpike)
 - To State of Ohio (Same as #2 above) D.V. 588 Pg. 403
 - To Ohio Edison (Over Entire parcel) D.V. 860 Pg. 123
 - To Elyria South (Water Line easement shown hereon) D.V. 901 Pg. 509
 - Restrictions over entire parcel to benefit of Elyria South, Inc. D.V. 1033 Pg. 526
 - To Elyria South (Water Line easement shown hereon) D.V. 1033 Pg. 529
 - To Elyria South (Storm Sewer Easement not over D.V. 1033 Pg. 532 this parcel)
 - To Elyria South (San Sewer Easement shown hereon) D.V. 1033 Pg. 536
 - To Elyria South (25' roadway easement shown D.V. 1033 Pg. 541 hereon)
 - To Ohio Edison Co. (Over Entire parcel) D.V. 1040 Pg. 36
 - To Elyria Telephone Co. (Over Entire parcel) D.V. 1041 Pg. 838
 - To Columbia Gas of Ohio, Inc. (Over Entire parcel) D.V. 1041 Pg. 875

TOTAL ACREAGE = 5.0344 Ac.

<p>CURVE (1) L = 33'18.40' R = 213.87' T = 63.65' L = 123.76' Ch. = 22.02' Ch. B. = N. 70° 51' 20" E</p>	<p>CURVE (2) L = 2' 23.01' R = 188.87' T = 3.93' L = 7.36' Ch. = 7.86' Ch. B. = N. 55° 33' 30" E</p>	<p>CURVE (3) L = 53' 47.38' R = 100.00' T = 25.65' T = 31.87' L = 194.75' Ch. = 75.80' Ch. B. = N. 45° 00' 00" E</p>	<p>CURVE (4) L = 53' 00.00' R = 200.00' T = 89.74' L = 104.72' Ch. = 103.53' Ch. B. = S. 65° 27' 00" W</p>	<p>CURVE (5) L = 13' 00.00' R = 100.00' T = 31.87' L = 62.83' Ch. = 62.5' Ch. B. = S. 50° 27' 00" W</p>	<p>CURVE (6) L = 100.00' R = 100.00' T = 31.87' L = 19.09' Ch. = 77.05' Ch. B. = N. 25° 12' 50" W</p>	<p>CURVE (7) L = 2' 23.01' R = 188.87' T = 3.93' L = 7.36' Ch. = 7.86' Ch. B. = N. 55° 33' 30" E</p>	<p>CURVE (8) L = 53' 47.38' R = 100.00' T = 25.65' T = 31.87' L = 194.75' Ch. = 75.80' Ch. B. = N. 45° 00' 00" E</p>	<p>CURVE (9) L = 53' 00.00' R = 200.00' T = 89.74' L = 104.72' Ch. = 103.53' Ch. B. = S. 65° 27' 00" W</p>	<p>CURVE (10) L = 13' 00.00' R = 100.00' T = 31.87' L = 62.83' Ch. = 62.5' Ch. B. = S. 50° 27' 00" W</p>	<p>CURVE (11) L = 100.00' R = 100.00' T = 31.87' L = 19.09' Ch. = 77.05' Ch. B. = N. 25° 12' 50" W</p>	<p>CURVE (12) L = 2' 23.01' R = 188.87' T = 3.93' L = 7.36' Ch. = 7.86' Ch. B. = N. 55° 33' 30" E</p>	<p>CURVE (13) L = 53' 47.38' R = 100.00' T = 25.65' T = 31.87' L = 194.75' Ch. = 75.80' Ch. B. = N. 45° 00' 00" E</p>	<p>CURVE (14) L = 53' 00.00' R = 200.00' T = 89.74' L = 104.72' Ch. = 103.53' Ch. B. = S. 65° 27' 00" W</p>	<p>CURVE (15) L = 13' 00.00' R = 100.00' T = 31.87' L = 62.83' Ch. = 62.5' Ch. B. = S. 50° 27' 00" W</p>
---	---	---	---	--	--	---	---	---	---	---	--	--	--	---

06-2A-030-000

Ridge Simon
7-11-73

JUL 16 1975

CHICAGO TITLE INSURANCE COMPANY

LOCATION PLAT

SCALE 1"=30' JULY 10, 1973 1 OF 1

LAUNDON, SIMON, CAHL & ASSOC., INC.
ENGINEERS-SURVEYORS

ELYRIA, OHIO