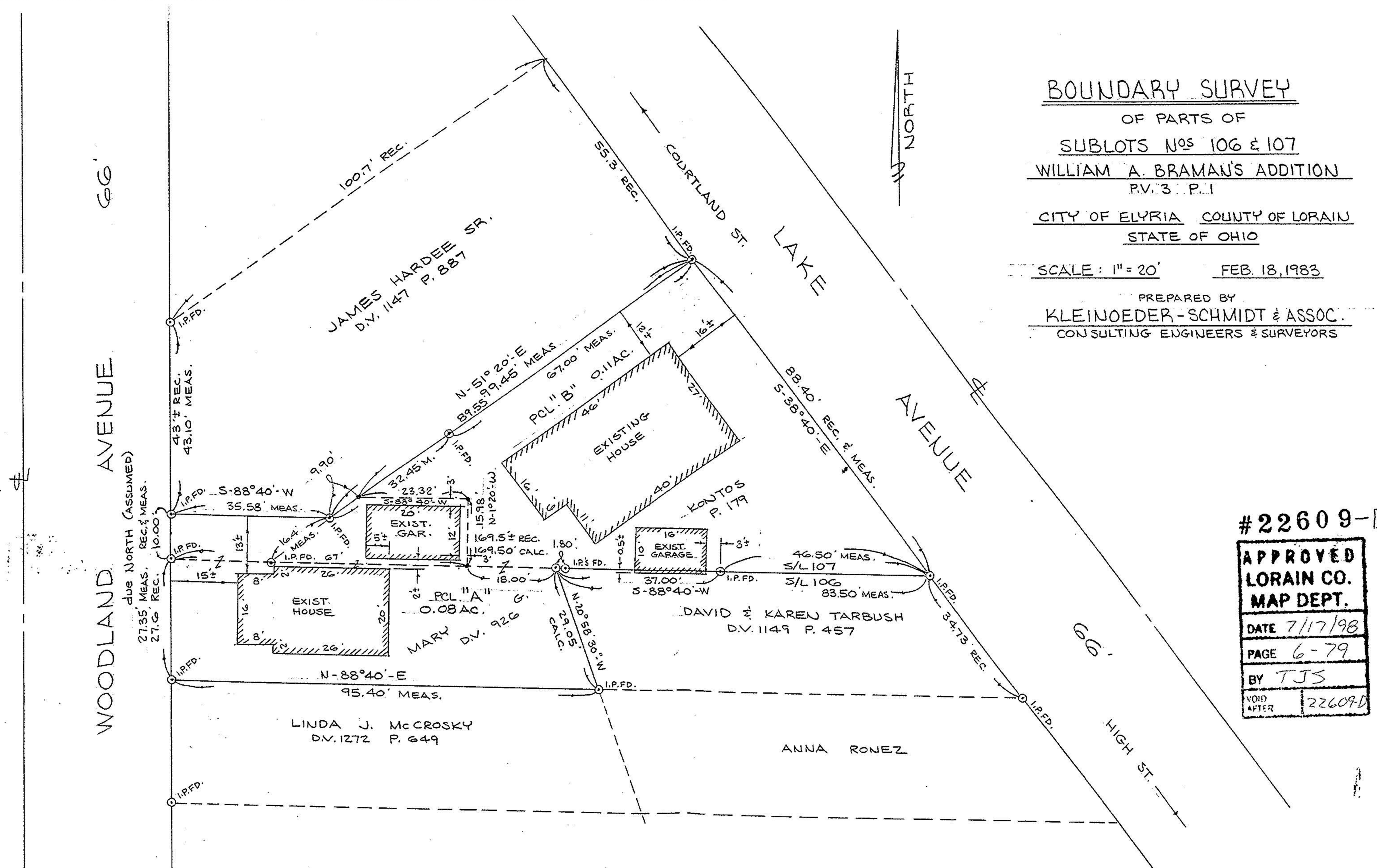


**BOUNDARY SURVEY**

OF PARTS OF  
SUBLOTS NOS 106 & 107  
WILLIAM A. BRAMAN'S ADDITION  
P.V. 3 P. 1  
CITY OF ELYRIA COUNTY OF LORAIN  
STATE OF OHIO

SCALE: 1" = 20'      FEB. 18, 1983

PREPARED BY  
KLEINOEDER-SCHMIDT & ASSOC.  
 CONSULTING ENGINEERS & SURVEYORS



#22609-D

<b>APPROVED</b>	
<b>LORAIN CO.</b>	
<b>MAP DEPT.</b>	
DATE	7/17/98
PAGE	6-79
BY	TJS
VOID AFTER	22609-D