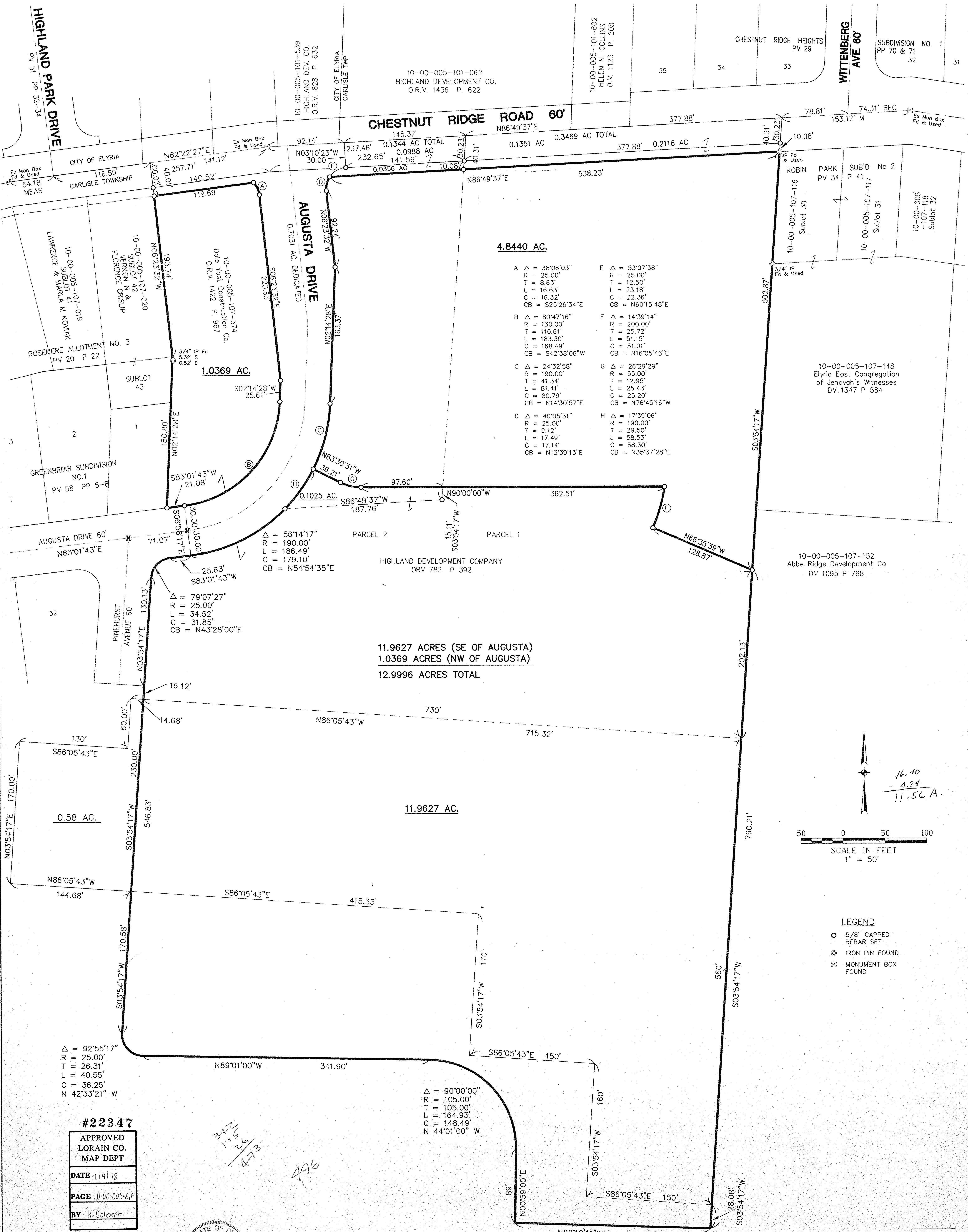


**SURVEY MAP**

PART OF ORIG. CARLISLE TWP.  
SECTION NO. 5  
CITY OF ELYRIA & TOWNSHIP OF CARLISLE  
COUNTY OF LORAIN STATE OF OHIO  
10-07-97  
(REV. 10-20-97)



11.9627 ACRES (SE OF AUGUSTA)  
1.0369 ACRES (NW OF AUGUSTA)  
12.9996 ACRES TOTAL

**4.8440 AC.**

A Δ = 38°06'03" R = 25.00' T = 8.63' L = 16.63' C = 16.32' CB = S25°26'34"E

B Δ = 80°47'16" R = 130.00' T = 110.81' L = 183.30' C = 168.49' CB = S42°38'06"W

C Δ = 24°32'58" R = 190.00' T = 41.34' L = 81.41' C = 80.79' CB = N14°30'57"E

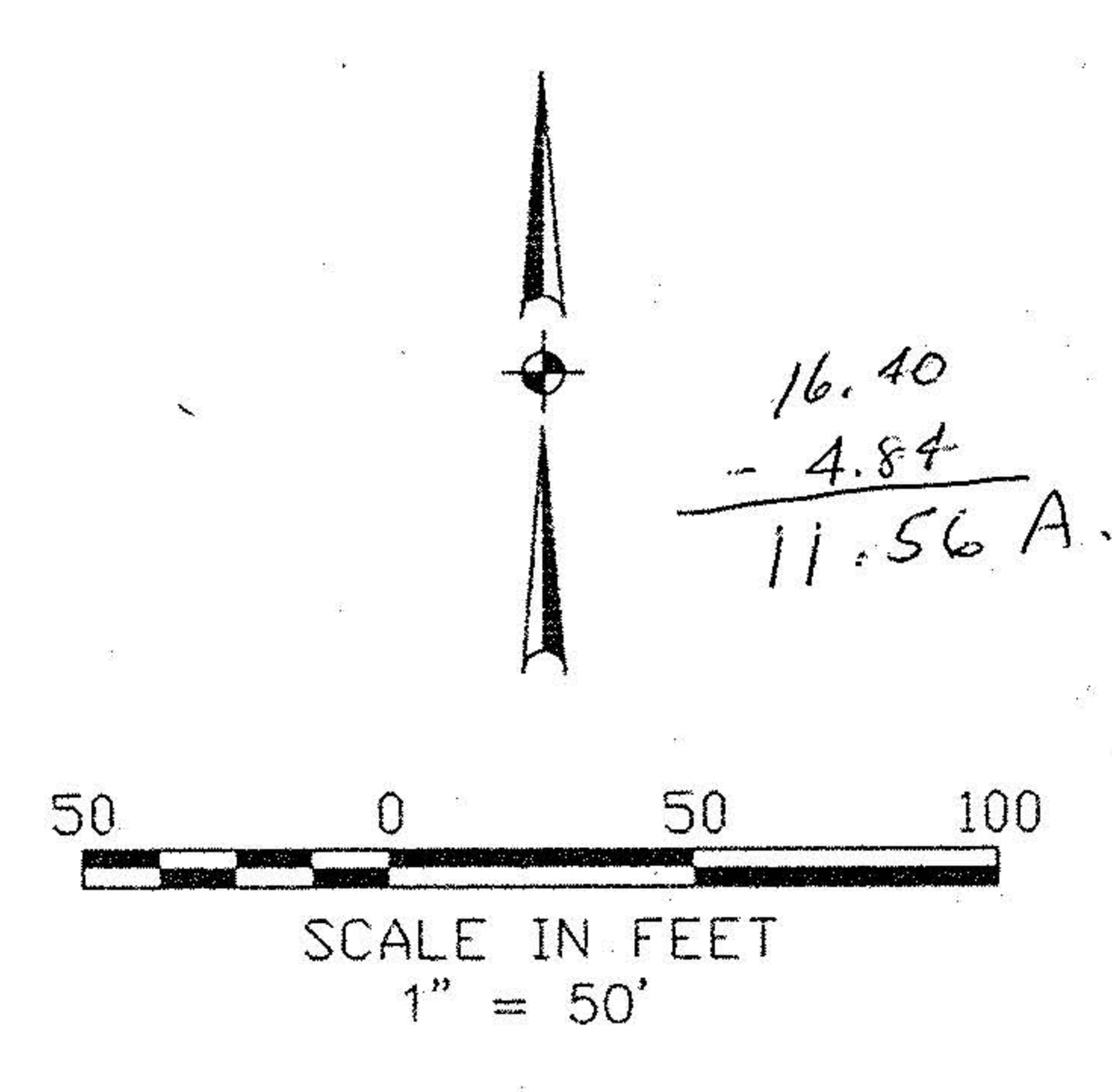
D Δ = 40°05'31" R = 25.00' T = 9.12' L = 17.49' C = 17.14' CB = N13°39'13"E

E Δ = 53°07'38" R = 25.00' T = 12.50' L = 23.18' C = 22.36' CB = N6°15'48"E

F Δ = 14°39'14" R = 200.00' T = 25.72' L = 51.15' C = 51.01' CB = N16°05'46"E

G Δ = 26°29'29" R = 55.00' T = 12.95' L = 25.43' C = 25.20' CB = N76°45'16"W

H Δ = 17°39'06" R = 190.00' T = 29.50' L = 58.53' C = 58.30' CB = N35°37'28"E



- LEGEND**
- 5/8" CAPPED REBAR SET
  - ⊙ IRON PIN FOUND
  - Ⓜ MONUMENT BOX FOUND

Δ = 92°55'17"  
R = 25.00'  
T = 26.31'  
L = 40.55'  
C = 36.25'  
N 42°33'21" W

Δ = 90°00'00"  
R = 105.00'  
T = 105.00'  
L = 164.93'  
C = 148.49'  
N 44°01'00" W

#22347  
APPROVED  
LORAIN CO.  
MAP DEPT  
DATE 1/19/98  
PAGE 10.00-005-EP  
BY K. Colbert



David L. Elwell  
REGISTERED SURVEYOR NO. 6333

KS ASSOCIATES, INC.  
ENGINEERS/SURVEYORS  
424 Middle Avenue  
P.O. Box 89  
Elyria, Ohio 44026  
PHONE (216) 322-6317 FAX (216) 284-0623

