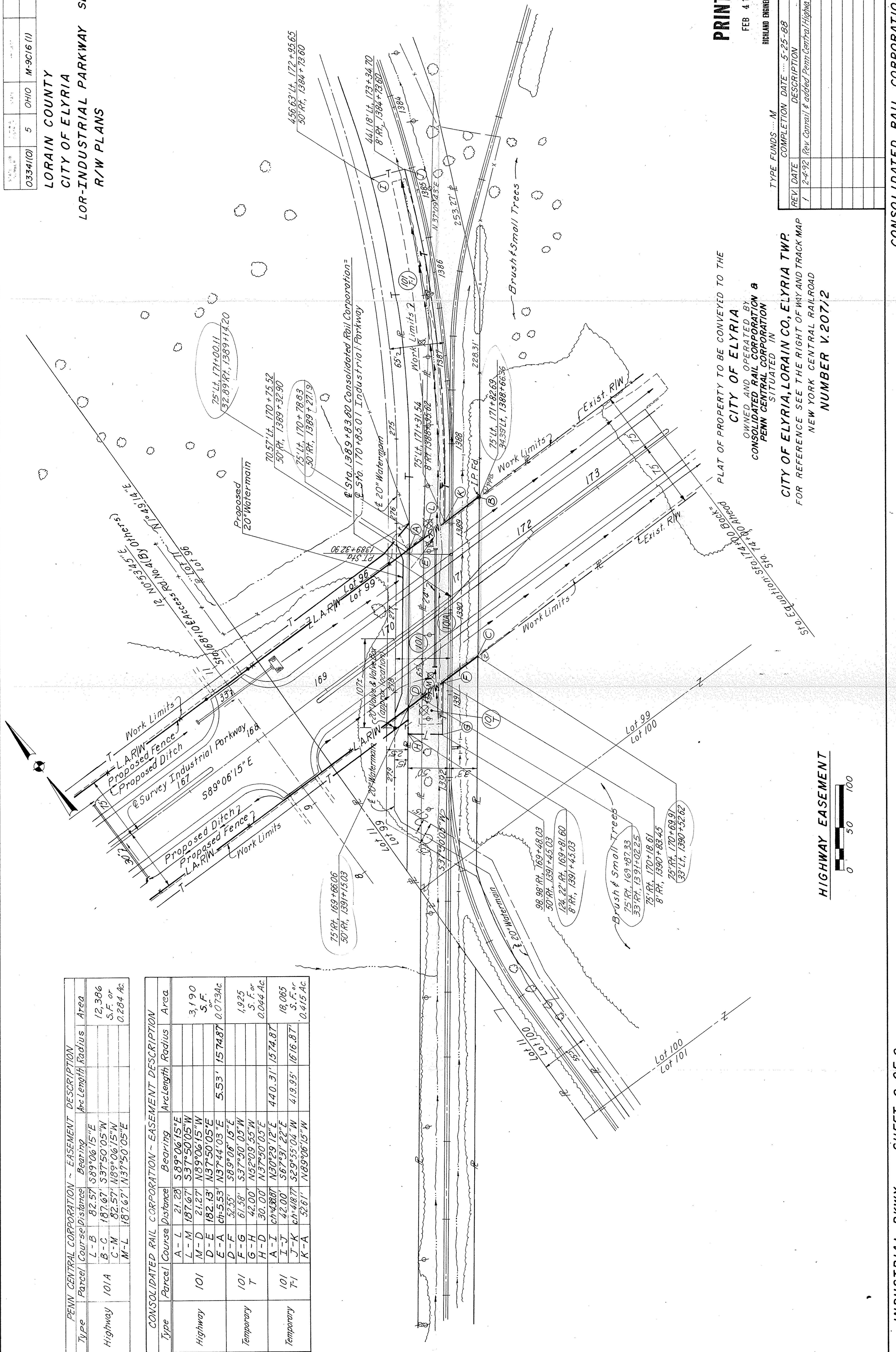
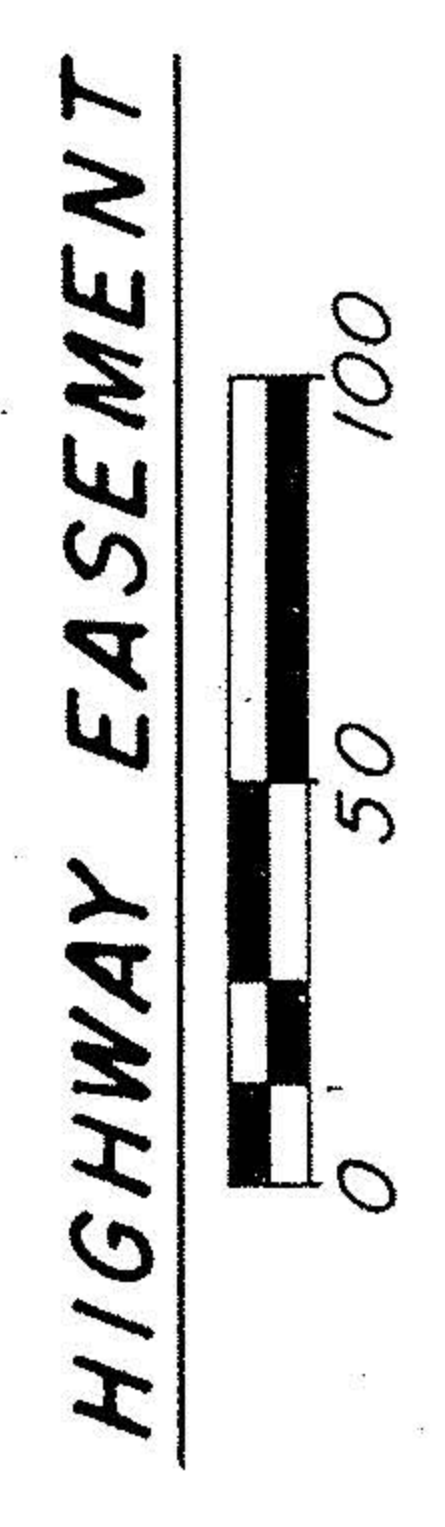


PENN CENTRAL CORPORATION - EASEMENT DESCRIPTION						
Type	Parcel	Course/Distance	Bearing	Arc Length	Radius	Area
Highway	101A	L-B	82.57' S89°06'15"E			12,386 S.F. or 0.284 Ac.
		B-C	187.67' S37°50'05"W			
		C-M	82.57' N89°06'15"W			
		M-L	187.67' N37°50'05"E			

CONSOLIDATED RAIL CORPORATION - EASEMENT DESCRIPTION						
Type	Parcel	Course/Distance	Bearing	Arc Length	Radius	Area
Highway	101	A-L	21.23' S89°06'15"E			3,190 S.F. or 0.0734 Ac.
		L-M	187.67' S37°50'05"W			
		M-D	21.27' N89°06'15"W			
		D-E	182.13' N37°50'05"E			
		E-A	ch-5.53' N37°44'03"E	5.53'	1574.87'	
Temporary	101	D-F	52.55' S89°06'15"E			1,925 S.F. or 0.044 Ac.
		F-G	61.58' S37°50'05"W			
		G-H	42.00' N32°09'55"W			
		H-D	30.00' N37°50'03"E			
Temporary	101	A-I	ch-4388' N30°29'12"E	440.31'	1574.87'	18,065 S.F. or 0.415 Ac.
		I-J	42.00' S67°31'22"E			
		J-K	ch-4187' S29°55'04"W	418.95'	1616.87'	
	K-A	52.61' N89°06'15"W				



PLAT OF PROPERTY TO BE CONVEYED TO THE
CITY OF ELYRIA
OWNED AND OPERATED BY
CONSOLIDATED RAIL CORPORATION &
PENN CENTRAL CORPORATION
SITUATED IN
CITY OF ELYRIA, LORAIN CO., ELYRIA TWP.
FOR REFERENCE SEE THE RIGHT OF WAY AND TRACK MAP
NEW YORK CENTRAL RAILROAD
NUMBER V.20712



PRINTED
FEB 4 1982
RICHARD ENGINEERING LTD.

REV	DATE	DESCRIPTION
1	2-4-82	Rev. Conrail & ex'ded. Penn Central Highway Easmt.

TYPE FUNDS ... M
COMPLETION DATE ... 5-25-88