

6-973, 98

-076-000

LOWELL STREET 66'

(FORMERLY "WEST STREET")

BOUNDARY SURVEY

PART OF ELYRIA TOWNSHIP ORIGINAL LOTS 11, 95, & 96

WEST OF BLACK RIVER

CITY OF ELYRIA COUNTY OF LORAIN STATE OF OHIO

SCALE: 1" = 40' JUNE 1985

PREPARED BY
KLEINGOEBER-SCHMIDT & ASSOC.
CONSULTING ENGINEERS & SURVEYORS

Revised 10-13-85
100' R.C.M.
Revised 12-7-85
REV 12-14-85
Revised 3-14-86
100' R.C.M.
Revised 5-18-86
100' R.C.M.
Revised 10-24-86

17166

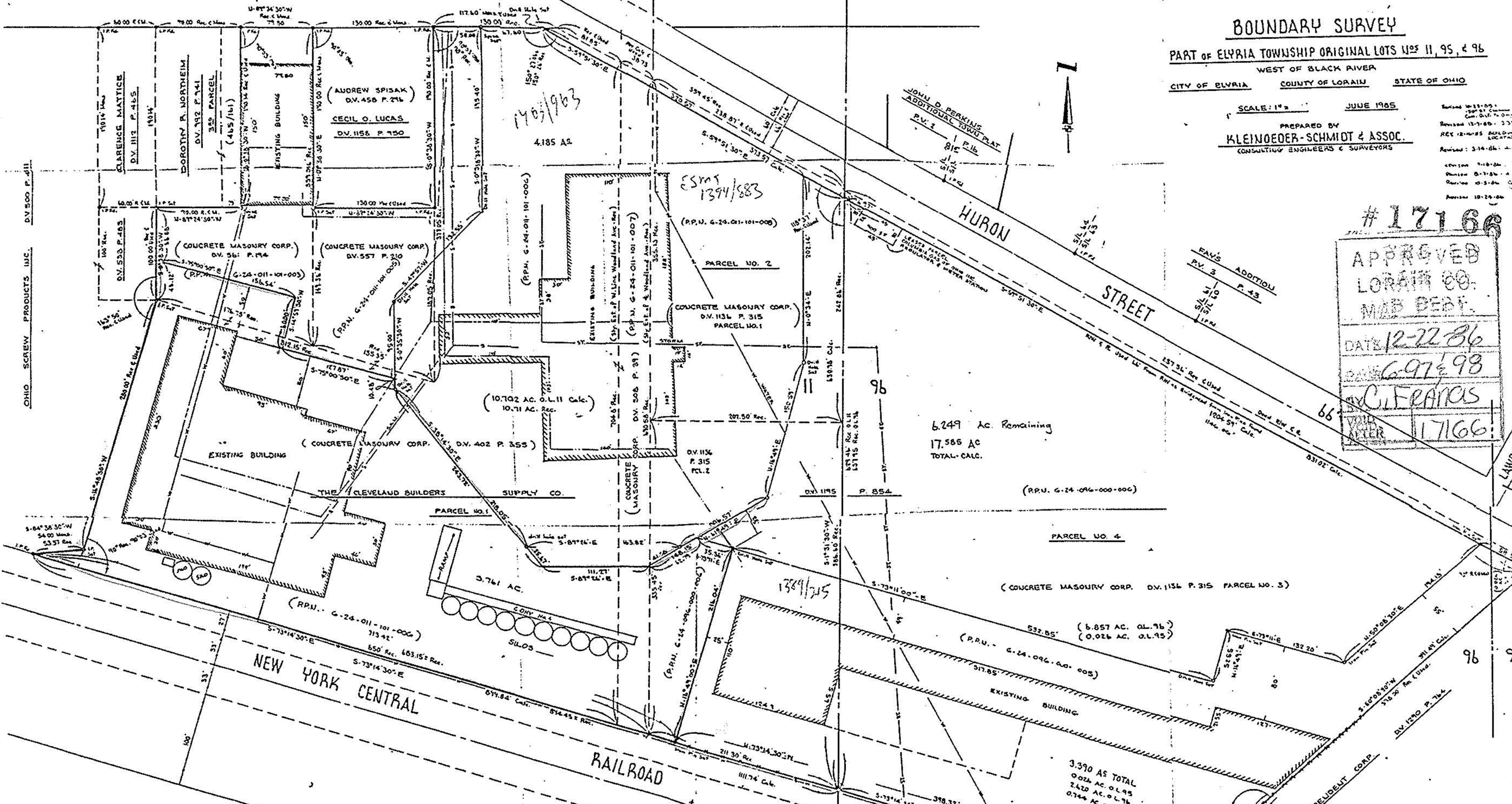
APPROVED
LORAIN CO.
MAB BEDE

DATE 12-22-86

DATE 6-97-98

C. FRANCIS

17166



OHIO SCREW PRODUCTS INC. DV. 500 P. 411



LAND