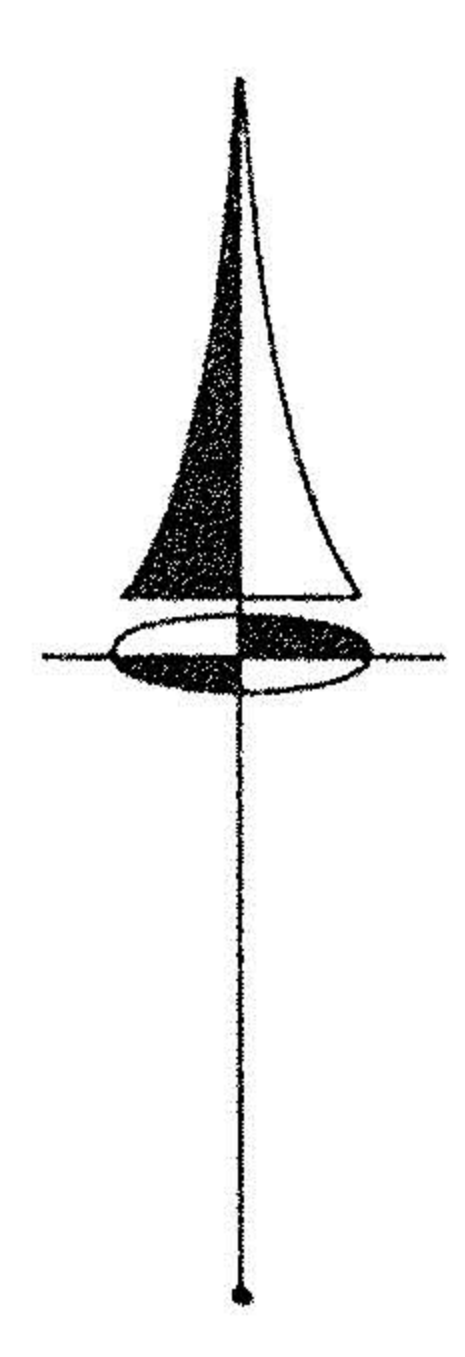
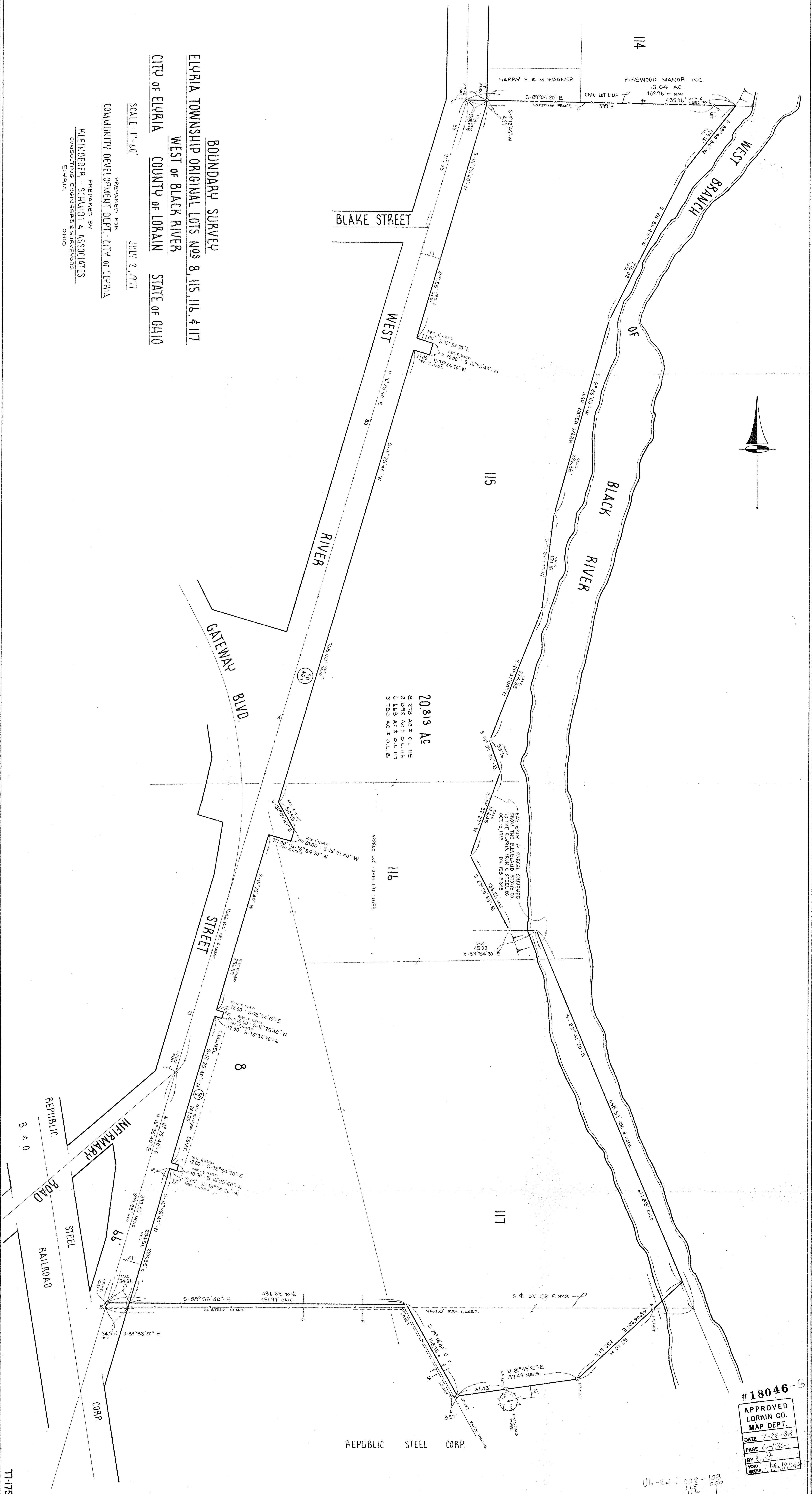


BOUNDARY SURVEY
ELYRIA TOWNSHIP ORIGINAL LOTS NOS 8, 115, 116, & 117
WEST OF BLACK RIVER
CITY OF ELYRIA COUNTY OF LORAIN STATE OF OHIO

PREPARED FOR
 COMMUNITY DEVELOPMENT DEPT. - CITY OF ELYRIA
 JULY 2, 1977

SCALE: 1" = 60'
 PREPARED BY
 KLEINDEEDER - SCHMIDT & ASSOCIATES
 CONSULTING ENGINEERS & SURVEYORS
 ELYRIA OHIO



#18046-B
 APPROVED
 LORAIN CO.
 MAP DEPT.
 DATE 7-29-83
 PAGE 6-136
 BY [Signature]
 VOID AFTER #18046

06-24-008-103
 115 000
 116 1
 117