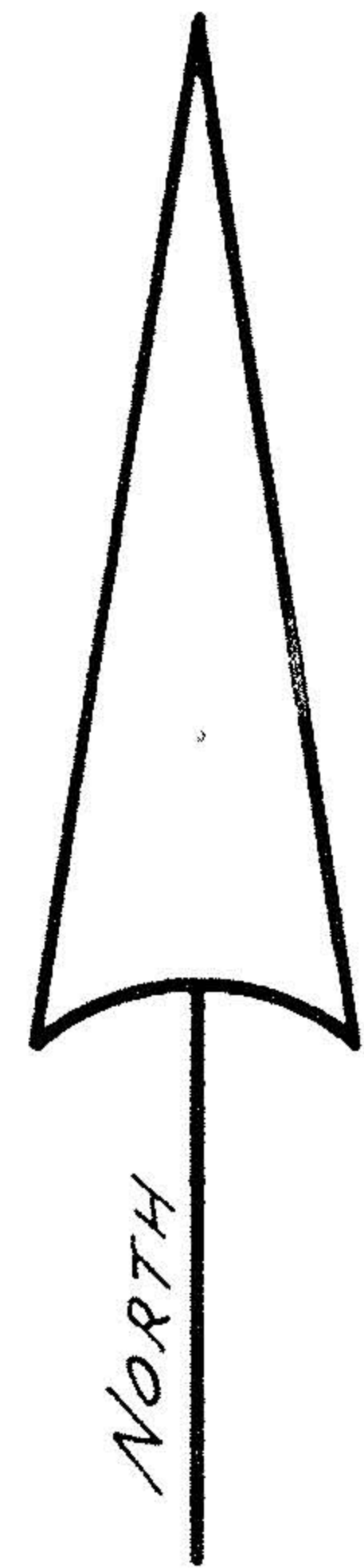
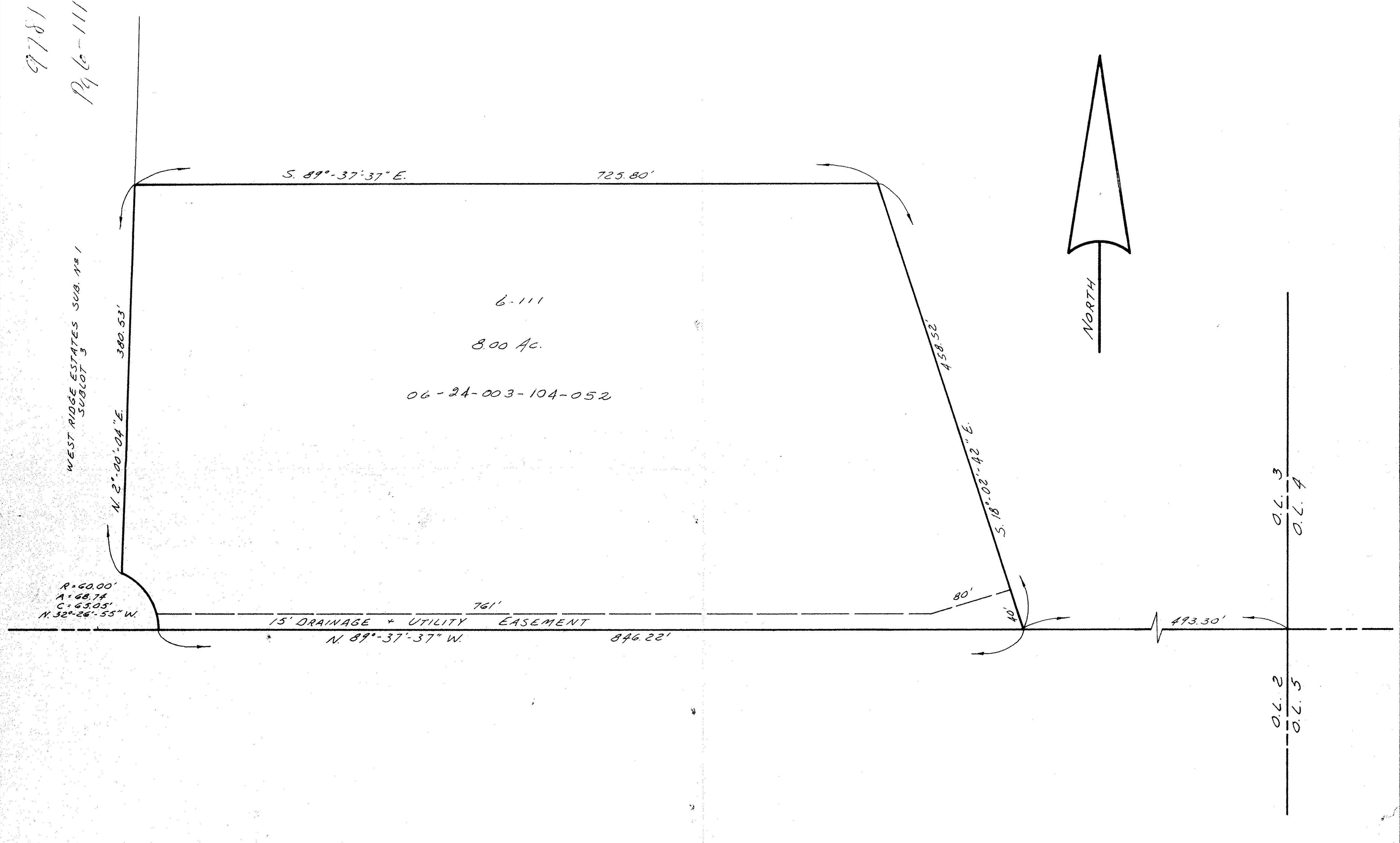


06-24-003

9781

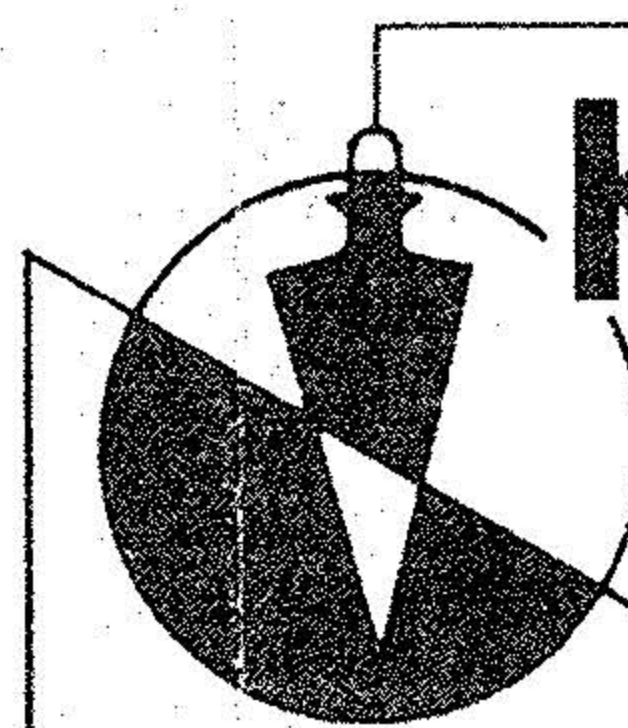
P46-111



PROJECT

PARCEL MAP
 of part of
 ORIGINAL LOT No 3 - WEST of BLACK RIVER
 CITY of ELYRIA COUNTY of LORAIN
 STATE of OHIO

Rev.	Drawn by: T.L.
	Checked by:
	App. by:
	Scale: 1" = 60'
	Date: 7-6-76



KLEINOEDER-SCHMIDT
 and ASSOCIATES

ENGINEERS — SURVEYORS — CONSULTANTS in LAND PLANNING
 ELYRIA - NORWALK - MEDINA OHIO

REFERENCES

SHEET NO.
 1 of 1

JOB NO.
 62-83

06-24-003