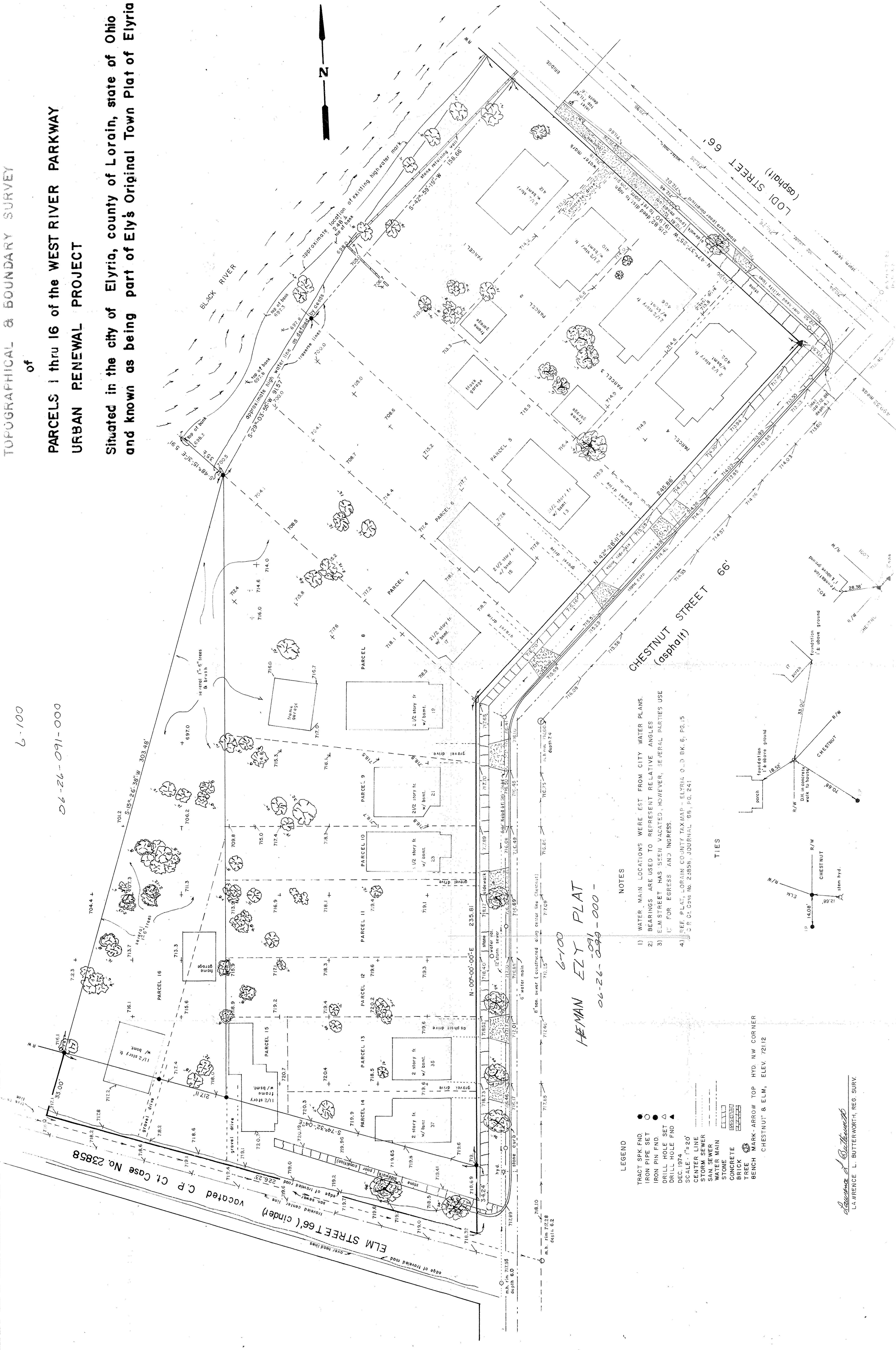


of

PARCELS 1 thru 16 of the WEST RIVER PARKWAY
URBAN RENEWAL PROJECT

Situated in the city of Elyria, county of Lorain, state of Ohio
and known as being part of Ely's Original Town Plat of Elyria

6-100
06-26-091-000



NOTES

- 1) WATER MAIN LOCATIONS WERE EST FROM CITY WATER PLANS.
- 2) BEARINGS ARE USED TO REPRESENT RELATIVE ANGLES
- 3) ELM STREET HAS BEEN VACATED, HOWEVER, SEVERAL PARTIES USE IT FOR EGRESS AND INGRESS.
- 4) REF PLAT, LORAIN COUNTY TAX MAP - ELYRIA, O.D. BK. 6, PG. 15
C.P. Ct. Case No. 23858, JOURNAL '68, PG. 241

LEGEND

- TRACT SPK FND
- IRON PIPE SET
- IRON PIN FND
- DRILL HOLE SET
- ▲ DRILL HOLE FND
- DEC. 1974
- SCALE: 1"=20'
- CENTER LINE
- STORM SEWER
- SAN SEWER
- WATER MAIN
- STONE
- CONCRETE
- BRICK
- TREE
- BENCH MARK - ARROW TOP HYD. NW CORNER
- CHESTNUT & ELM, ELEV. 72112

HEMAN ELY PLAT
6-100
06-26-091-000

Lawrence L. Butterworth
LA MRENCE L. BUTTERWORTH, REG. SURV.