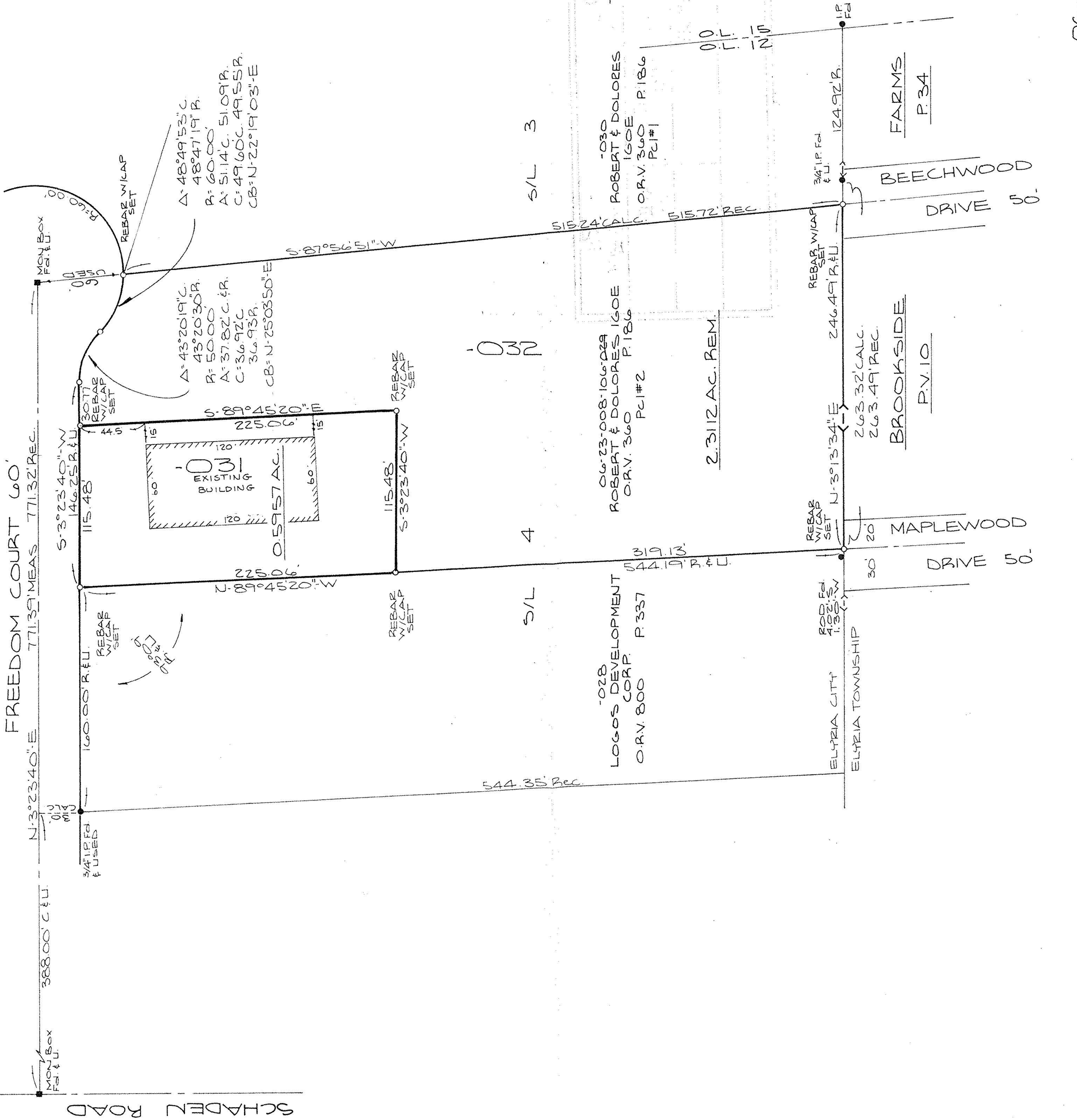


FREEDOM COURT 60'

771.32' MEAS 771.32' REC.

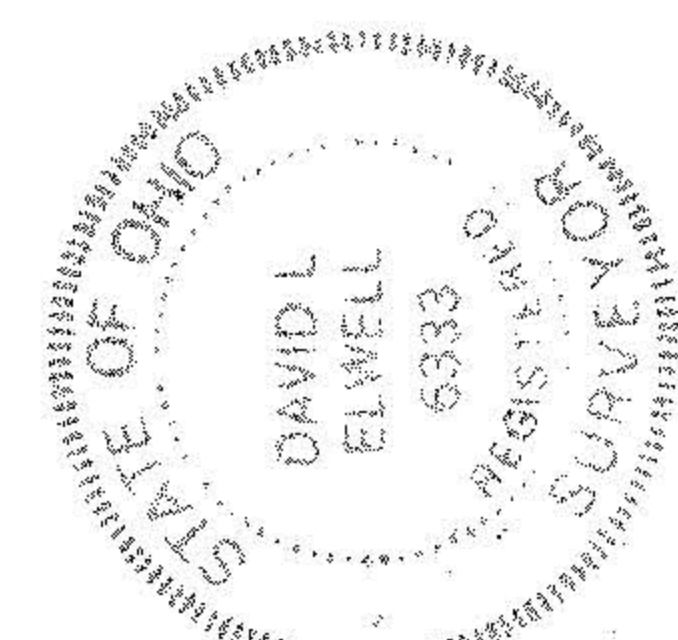
388.00' C & U.

SCHADEN ROAD



SURVEY MAP
 PART OF SUBLOT No. 4 IN
 MIDWAY INDUSTRIAL PARK P.V. 36 P.17418
 CITY OF ELYRIA
 COUNTY OF LORAIN STATE OF OHIO
 JANUARY 10, 1995
 REV. 05-25-95 (BUILDING)
 PREPARED BY:
KS ASSOCIATES INC.
 ENGINEERS SURVEYORS

David L. Elwell
 DAVID L. ELWELL
 REG. SURVEYOR NO. 6333



21361
APPROVED LORAIN CO. MAP DEPT
DATE 6-7-95
PAGE 6-26
BY CAROLYN FRANCIS
21361

06-23-008-106

94701