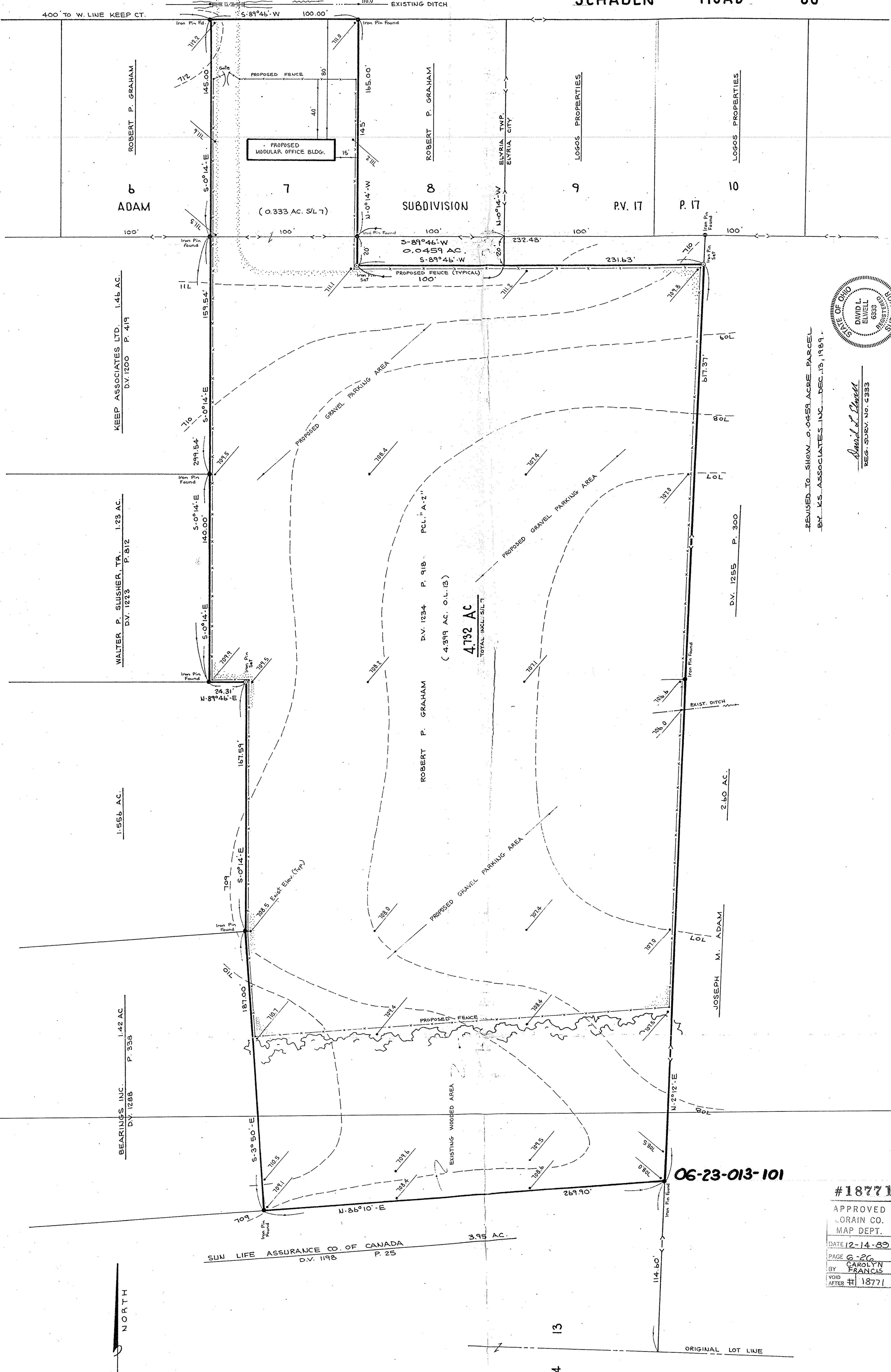


SCHADEN ROAD 60'



ROBERT P. GRAHAM

ADAM

KEEP ASSOCIATES LTD. 1.46 AC. DV. 1200 P. 419

WALTER P. SLUSHER, TR. 1.23 AC. DV. 1223 P. 812

1.556 AC.

BEARINGS, INC. 1.42 AC. DV. 1286 P. 336

NORTH

SUN LIFE ASSURANCE CO. OF CANADA 3.95 AC. DV. 1198 P. 25

ROBERT P. GRAHAM

8 SUBDIVISION

4.792 AC. TOTAL INCL. S/L 7

ROBERT P. GRAHAM DV. 1234 P. 918 P.C.L. "A-2" (4.399 AC. O.L. 13)

JOSEPH M. ADAM 2.60 AC.

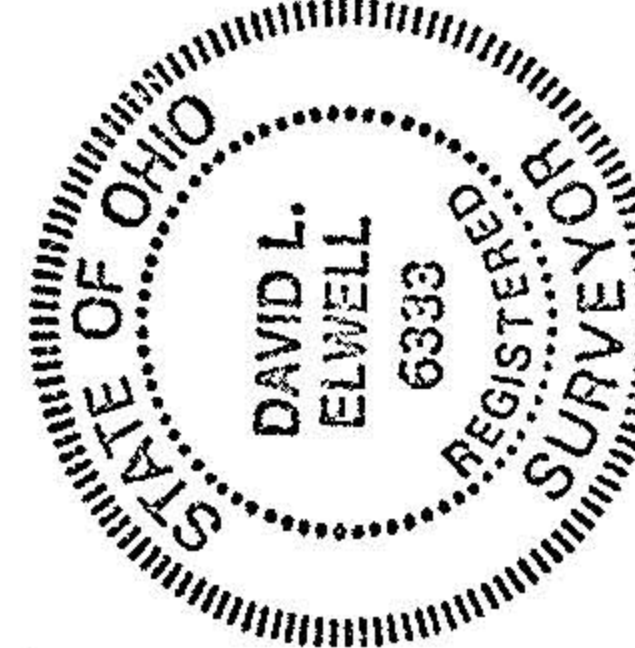
LOGOS PROPERTIES

LOGOS PROPERTIES

P.V. 17

P. 17

06-23-013-101



David L. Elwell REG. SURV. NO. 6393

REVISED TO SHOW 0.0459 ACRE PARCEL BY K.S. ASSOCIATES, INC. DEC. 13, 1989.

REFERENCES

KLEINODER-SCHMIDT and ASSOCIATES
ENGINEERS - SURVEYORS - CONSULTANTS IN LAND PLANNING
ELYRIA - NORWALK - MEDINA - OHIO

Drawn by: DE

Checked by:

App. by:

Scale: 1" = 30'

Date: MAR. 6, 1984

PREPARED FOR:

PROJECT
TOPOGRAPHICAL SURVEY & SITE PLAN
SUBLOT NO. 7 IN ADAM SUBDIVISION - REC. P.V. 17 P. 17 &
PART OF ORIGINAL LOT NO. 13 IN THE BRACE TR. OF ELYRIA, TWP.
CITY & TWP. OF ELYRIA COUNTY OF LORAIN STATE OF OHIO

#18771

APPROVED LORAIN CO. MAP DEPT. DATE 12-14-89 PAGE 6-26 BY CAROLYN FRANCIS VOID AFTER #18771

No.	Date	Description	By
1	12-13-89	REVISED TO SHOW 0.0459 AC. P.C.L.	DE

REVISIONS

JOB NO. 18-318

SHEET NO. 1 of 1