

(NOTE: UTILITY INFO. TAKEN FROM CITY RECORDS ONLY. VERIFY BY TOPOGRAPHICAL SURVEY.)

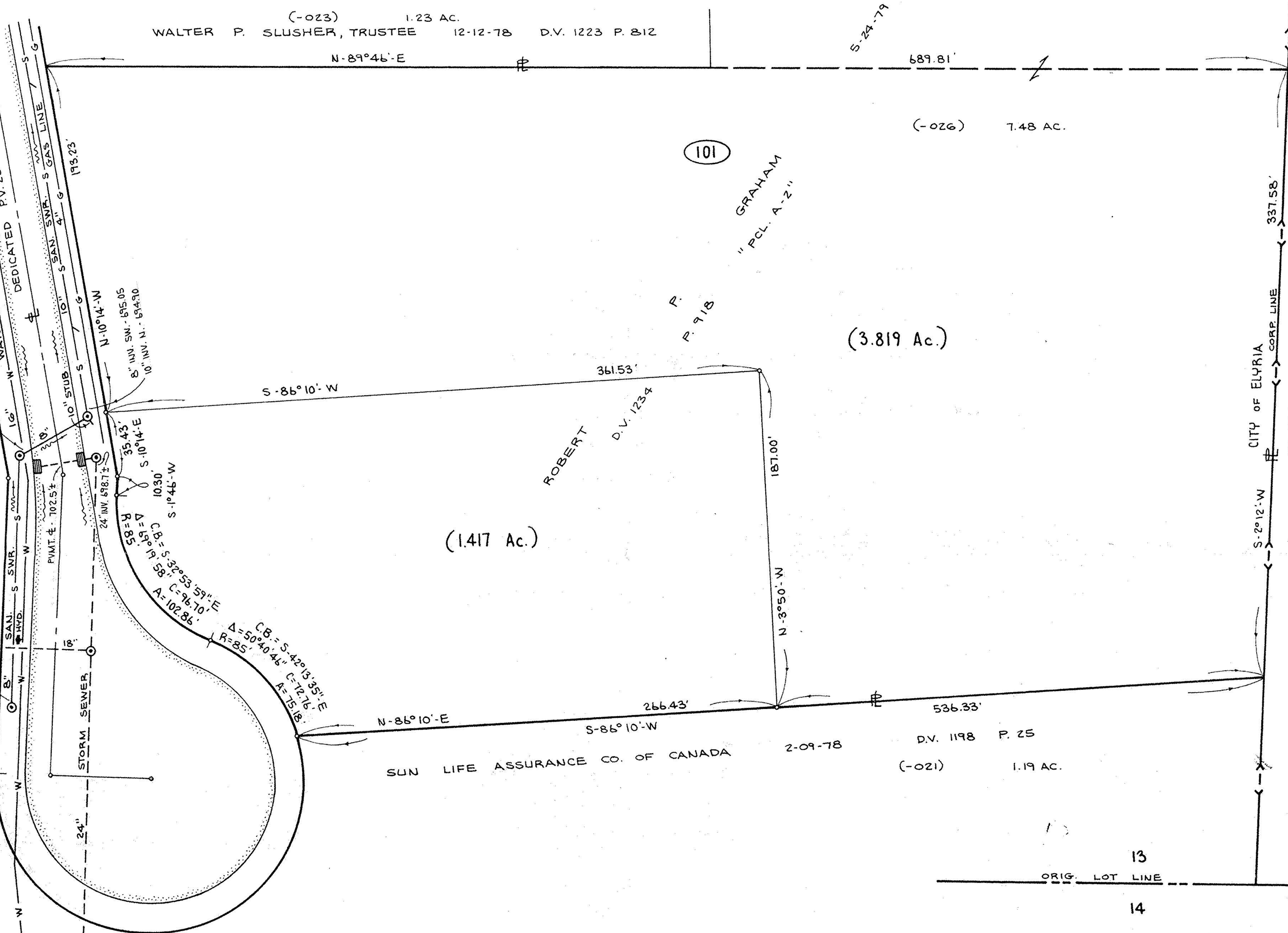
SCALE: 1" = 40'
JULY 22, 1981



60'

KEEP COURT

KEEP



(-023) 1.23 AC.
WALTER P. SLUSHER, TRUSTEE 12-12-78 D.V. 1223 P. 812

689.81'

(-026) 7.48 AC.

101

GRAHAM
"PCL. A-2"

P. 918

(3.819 Ac.)

361.53'

ROBERT

D.V. 1237

(1.417 Ac.)

187.00'

266.43'

536.33'

SUN LIFE ASSURANCE CO. OF CANADA

2-09-78

D.V. 1198 P. 25

(-021) 1.19 AC.

CITY OF ELYRIA
TOWNSHIP OF ELYRIA

D.V. 1255 P. 300

2-14-80

(-015)
(2.60 AC.)

JOSEPH M. ADAM

ORIG. LOT LINE

13

14

PARCEL & UTILITY MAP

PART OF ORIGINAL LOT NO 13 IN THE BRACE TRACT OF
ELYRIA TWP. NOW IN THE CITY OF ELYRIA, COUNTY OF

LORAIN, & STATE OF OHIO

PREPARED BY
KLEINOEDER-SCHMIDT & ASSOC.
CONSULTING ENGINEERS & SURV.

#14323

APPROVED
LORAIN CO.
MAP DEPT.
DATE 7-29-81
PAGE 6-26
BY <i>Carstyn</i>
VOID AFTER