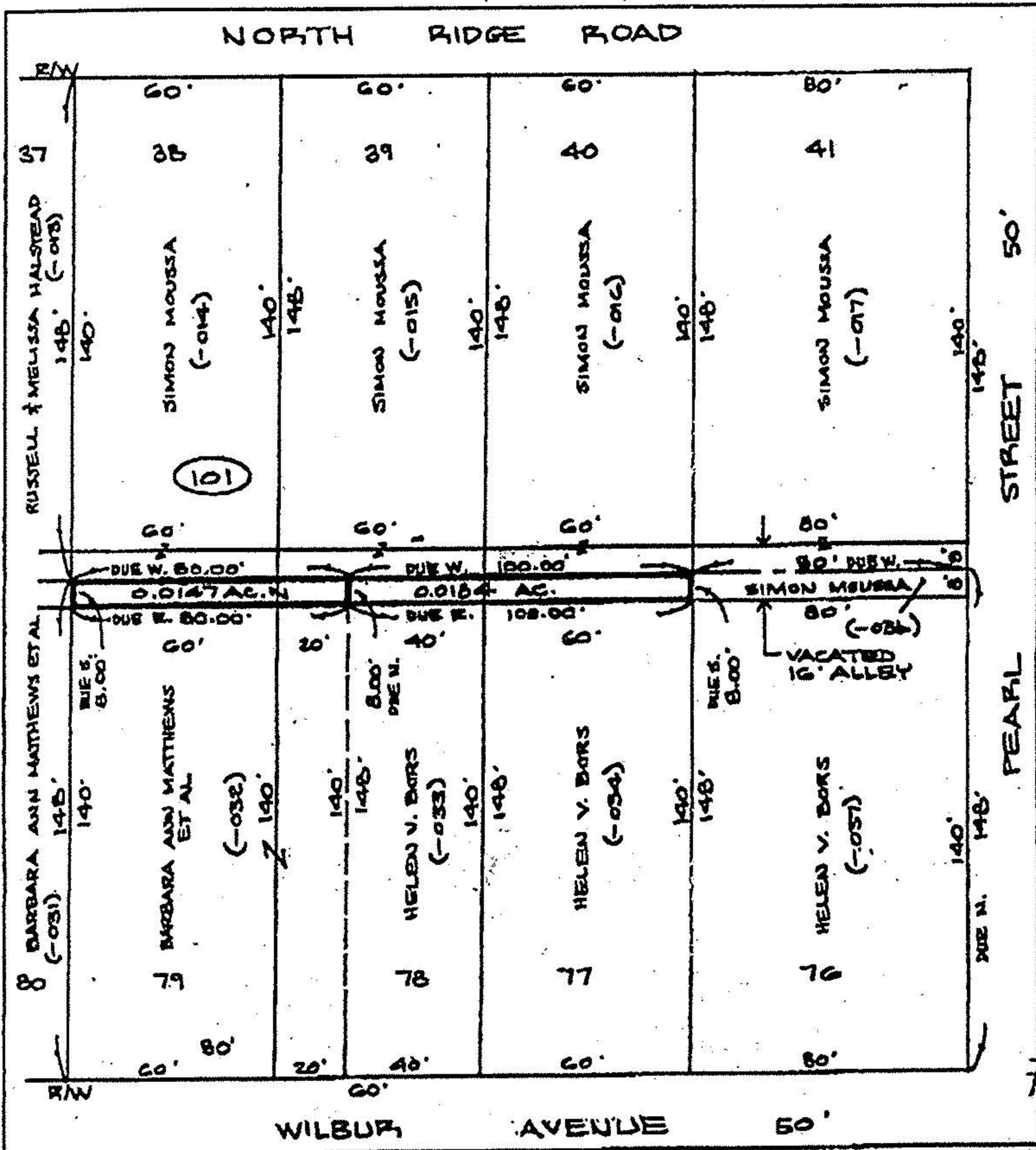


KS ASSOCIATES, INC.
 424 Middle Ave. P.O. Box 89
 ELYRIA, OHIO 44036
 (440) 322-5317

000531 WILBUR HEIGHTS ALLEY

REVISIONS OF
 CALCULATED BY DATE
 CHECKED BY DATE
 SCALE 1" = 40' = 80' = 100'



#00531

MAP OF VACATED ALLEY

PART OF WILBUR HEIGHTS ALLOTMENT

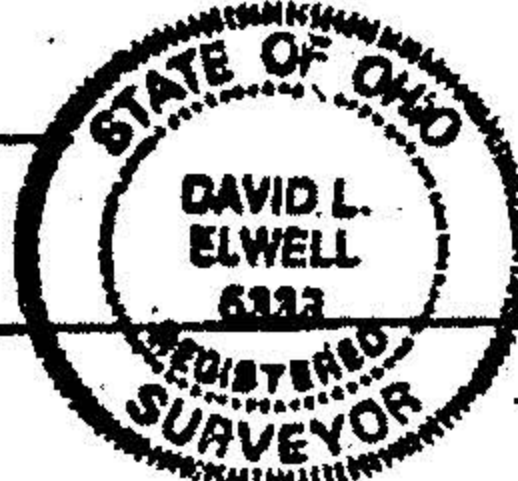
REG. P.V. 5 P. 12

PART OF ORIGINAL LOT NO. 18 - BURRELL & DAY 11/ OF ELYRIA TOWNSHIP

TOWNSHIP OF ELYRIA COUNTY OF LORAIN STATE OF OHIO

THIS MAP PREPARED FROM THE PLAT OF WILBUR HEIGHTS ALLOTMENT ONLY.

David L. Elwell
 REG. SURV. NO. 6323



APPROVED LORAIN CO. MAP DEPT
DATE 8-18-2000
PAGE 6-6
BY <i>Elwell</i>