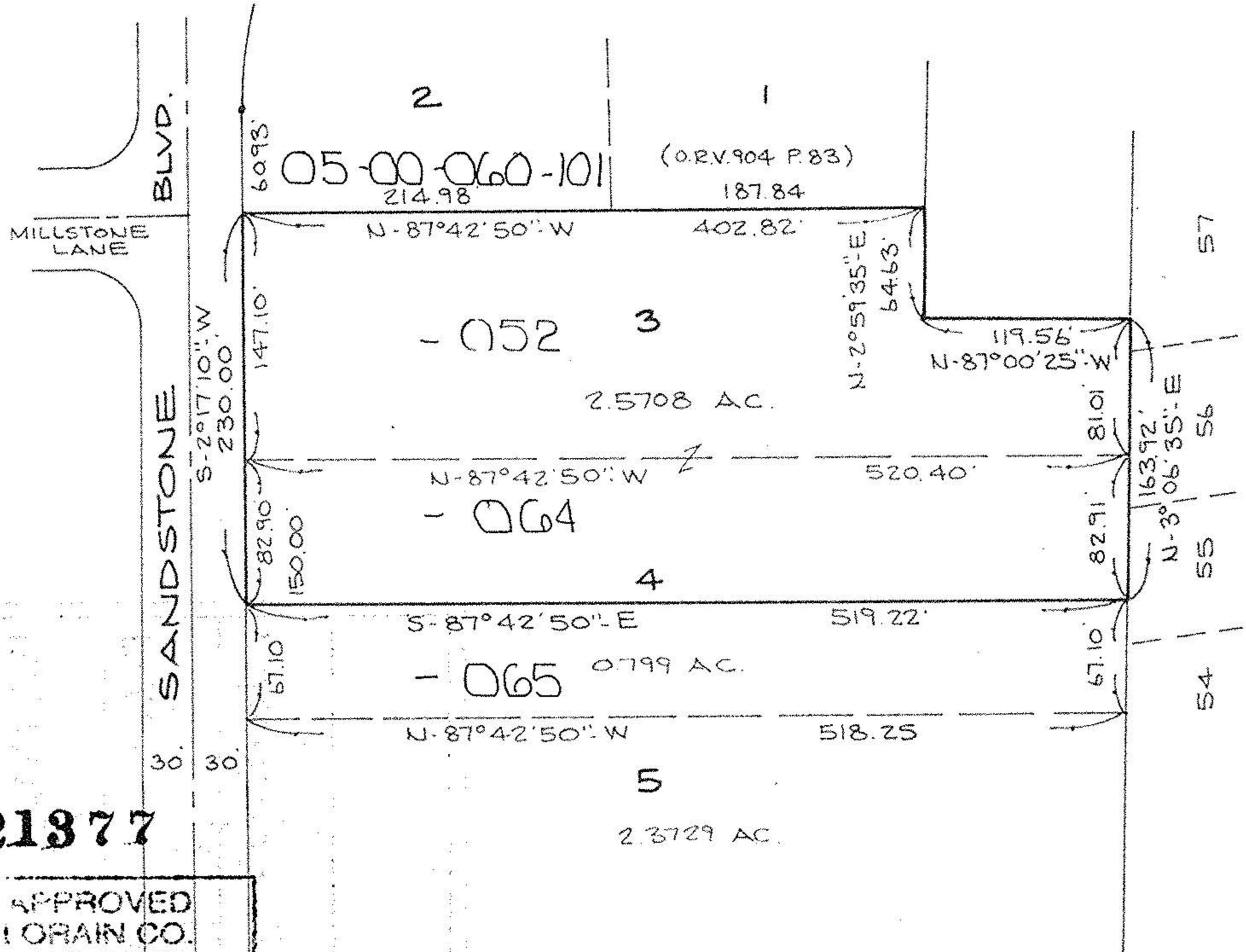
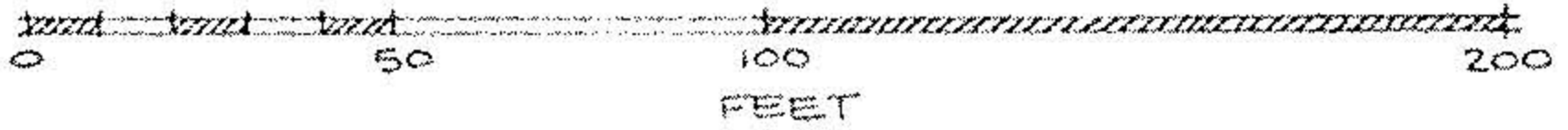


SCALE: 1" = 50'



21377

APPROVED LORAIN CO. MAP DEPT
DATE 6-19-95
PLAT VOL. 53 P. 9 PAGE 5-00-060-A
BY CAROLYN FRANCIS
21377

SUBLOT 3 & PART OF SUBLOT 4
 IN
AMHERST COMMERCE PARK SUBD'N
 P.V. 53 P. 9
CITY OF AMHERST COUNTY OF LORAIN
STATE OF OHIO

PREPARED BY
KS ASSOCIATES INC.
 ENGINEERS SURVEYORS

NOTE: THIS MAP PREPARED FROM SURVEY
 FOR AMHERST COMMERCE PARK
 SUBDIVISION. NO PINS HAVE BEEN SET.



David L. Elwell
 REG. SURV. NO. 6333
 6-13-95

95-251
 (88-518)