

PLAT OF SURVEYS FOR
KENNETH R. BECHTEL

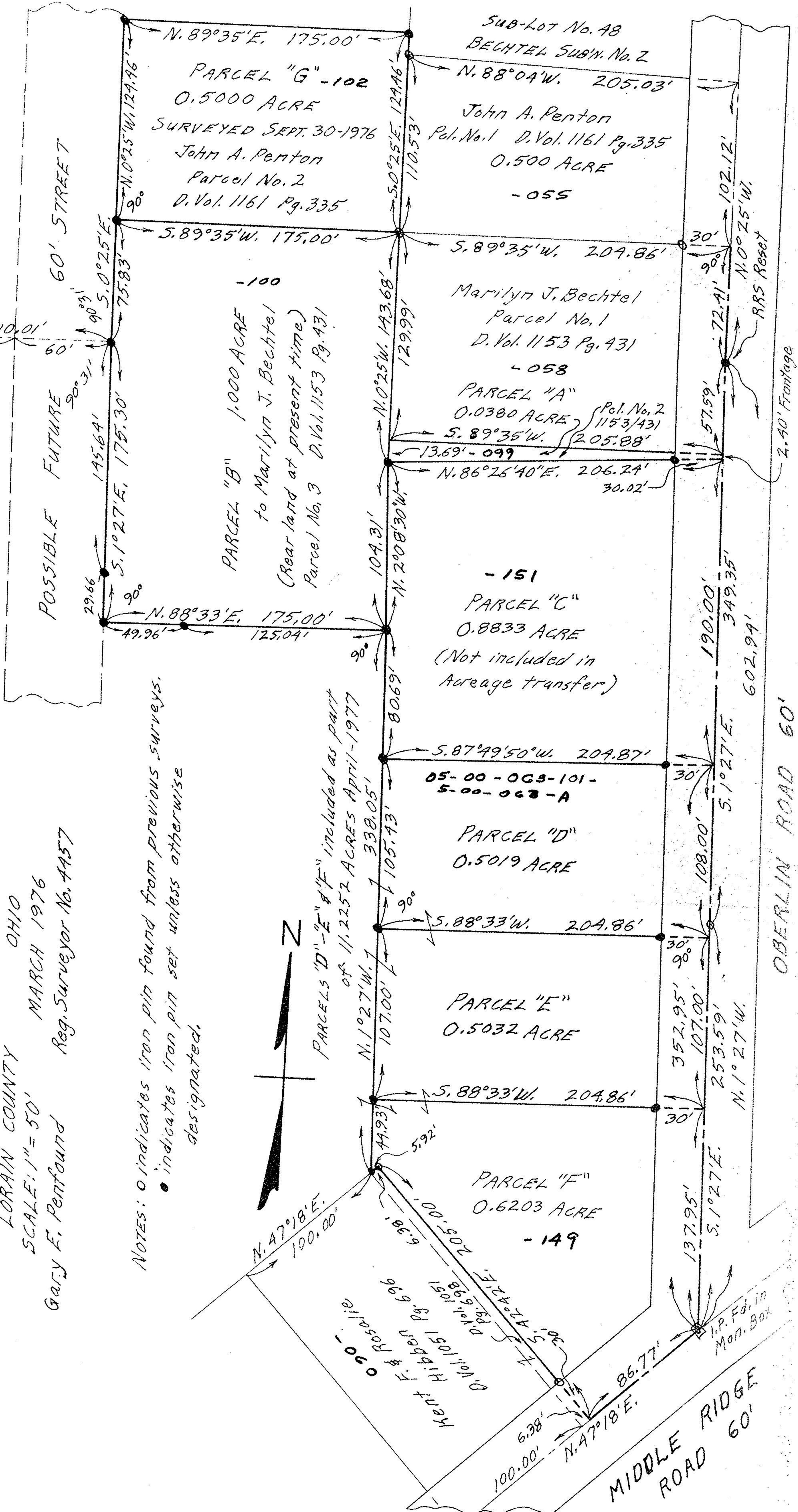
ORIGINAL LOT NO. 63 AMHERST TOWNSHIP
LORAIN COUNTY OHIO
SCALE: 1" = 50'
MARCH 1976
Gary E. Pentfound Reg. Surveyor No. 4457

NOTES: ○ indicates iron pin found from previous surveys.
● indicates iron pin set unless otherwise designated.



PARCELS "D" - "E" & "F" included as part
of 11.2252 ACRES APRIL-1977

Bechtel Westerly Property Line
N. 1° 27' W. 493.96'
N. 0° 25' W. 667.73'
150.01'
210.01'



POSSIBLE FUTURE
60' STREET

PARCEL "B" 1.000 ACRE
to Marilyn J. Bechtel
(Rear land at present time)
Parcel No. 3 D. Vol. 1153 Pg. 431

Marilyn J. Bechtel
Parcel No. 1
D. Vol. 1153 Pg. 431
- 058

PARCEL "A"
0.0380 ACRE
Pol. No. 2 1153/431
S. 89° 35' W. 205.88'
13.69' - 099

PARCEL "C"
0.8833 ACRE
(Not included in
Acreage transfer)

PARCEL "D"
0.5019 ACRE

PARCEL "E"
0.5032 ACRE

PARCEL "F"
0.6203 ACRE
- 149

SUB-LOT No. 48
BECHTEL SUB'D. No. 2
N. 88° 04' W. 205.03'
John A. Penton
Pol. No. 1 D. Vol. 1161 Pg. 335
0.500 ACRE
- 055

I.P. Fd. in
Mon. Box

MIDDLE RIDGE
ROAD 60'

OBERLIN ROAD 60'

2.40' Frontage

RRS Reset

102.12'
N. 0° 25' W.

190.00'
349.35'
602.94'

108.00'
5.1° 27' E.

137.95'
5.1° 27' E.

72.41'
90°

57.59'
30.02'

209.87'
5.87° 49' 50" W.

204.86'
5.88° 33' W.

204.86'
5.88° 33' W.

204.86'
5.88° 33' W.

110.53'
5.0° 25' E.

129.99'
N. 0° 25' W.

143.68'
N. 0° 25' W.

104.31'
N. 2° 08' 30" W.

175.00'
N. 88° 33' E.

175.00'
S. 89° 35' W.

175.00'
N. 89° 35' E.

124.96'
N. 0° 25' W.

124.96'
N. 0° 25' W.

124.96'
N. 0° 25' W.

175.00'
S. 89° 35' W.

175.00'
S. 89° 35' W.

175.00'
S. 89° 35' W.

175.00'
S. 89° 35' W.

175.00'
S. 89° 35' W.

175.00'
S. 89° 35' W.

175.00'
S. 89° 35' W.

175.00'
S. 89° 35' W.

175.00'
S. 89° 35' W.