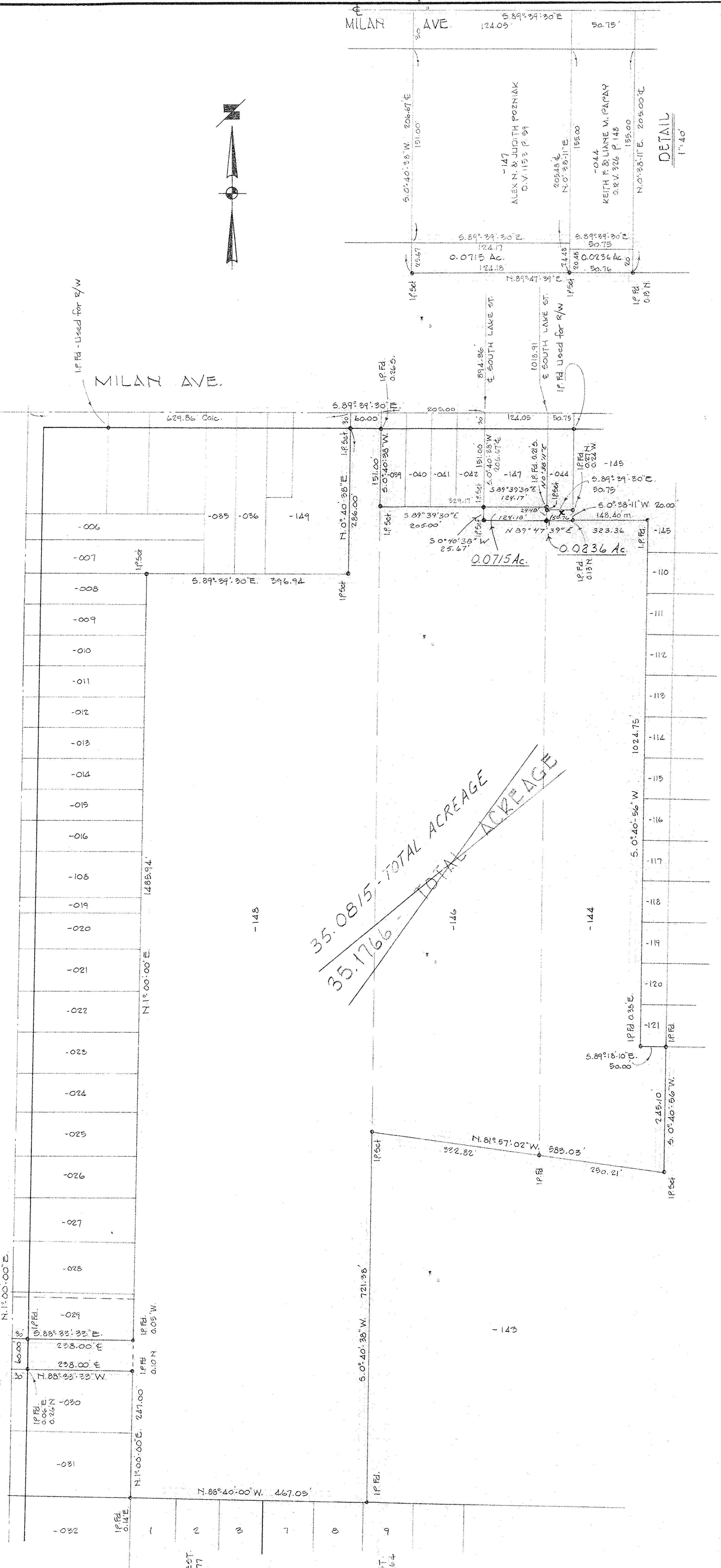


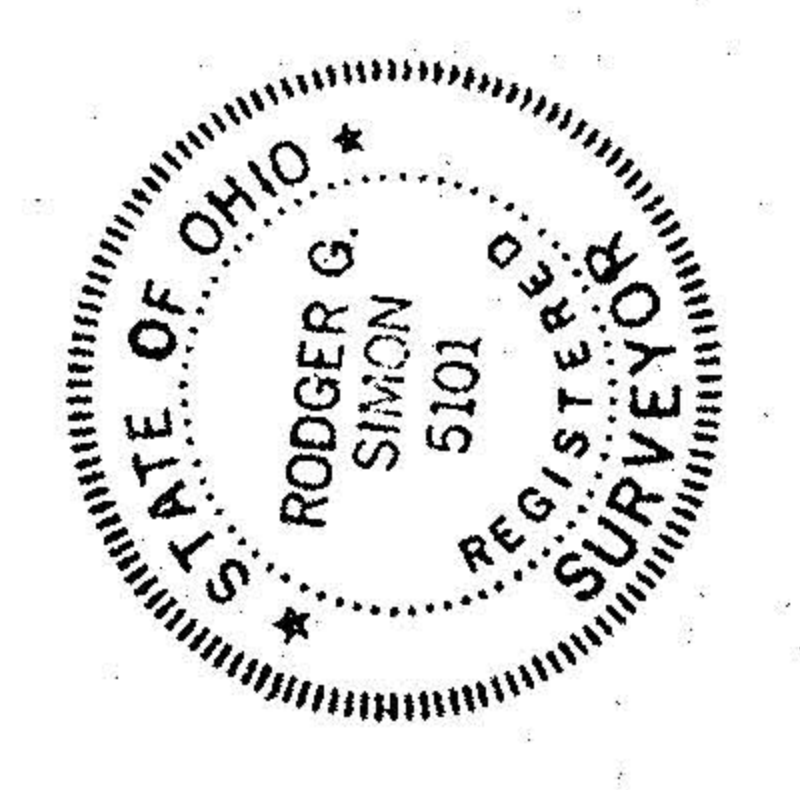
SOUTH LAKE ST. 60'



CHARLES OAK POINT EST.
SUBN No 2 P.V. 25 P. 77

CHARLES OAK POINT EST.
SUBN No 2 P.V. 25 P. 64

SURVEY FOR THE
AMHERST EVSO BOARD OF EDUCATION
 PART OF TOWNSHIP OF AMHERST CITY OF AMHERST
 COUNTY OF LORAIN STATE OF OHIO
 SCALE 1"=100 DEC., 1997
 LAUNOON • SIMON • CAHL & ASSOC.
 PROFESSIONAL LAND SURVEYORS



#22693
 APPROVED
 LORAIN CO.
 MAP DEPT.
 DATE 11-4-98
 1995-00-017A
 BY TJS
 22693

#22702
 APPROVED
 LORAIN CO.
 MAP DEPT.
 DATE 11-17-98
 1995-00-017A
 BY TJS
 22702