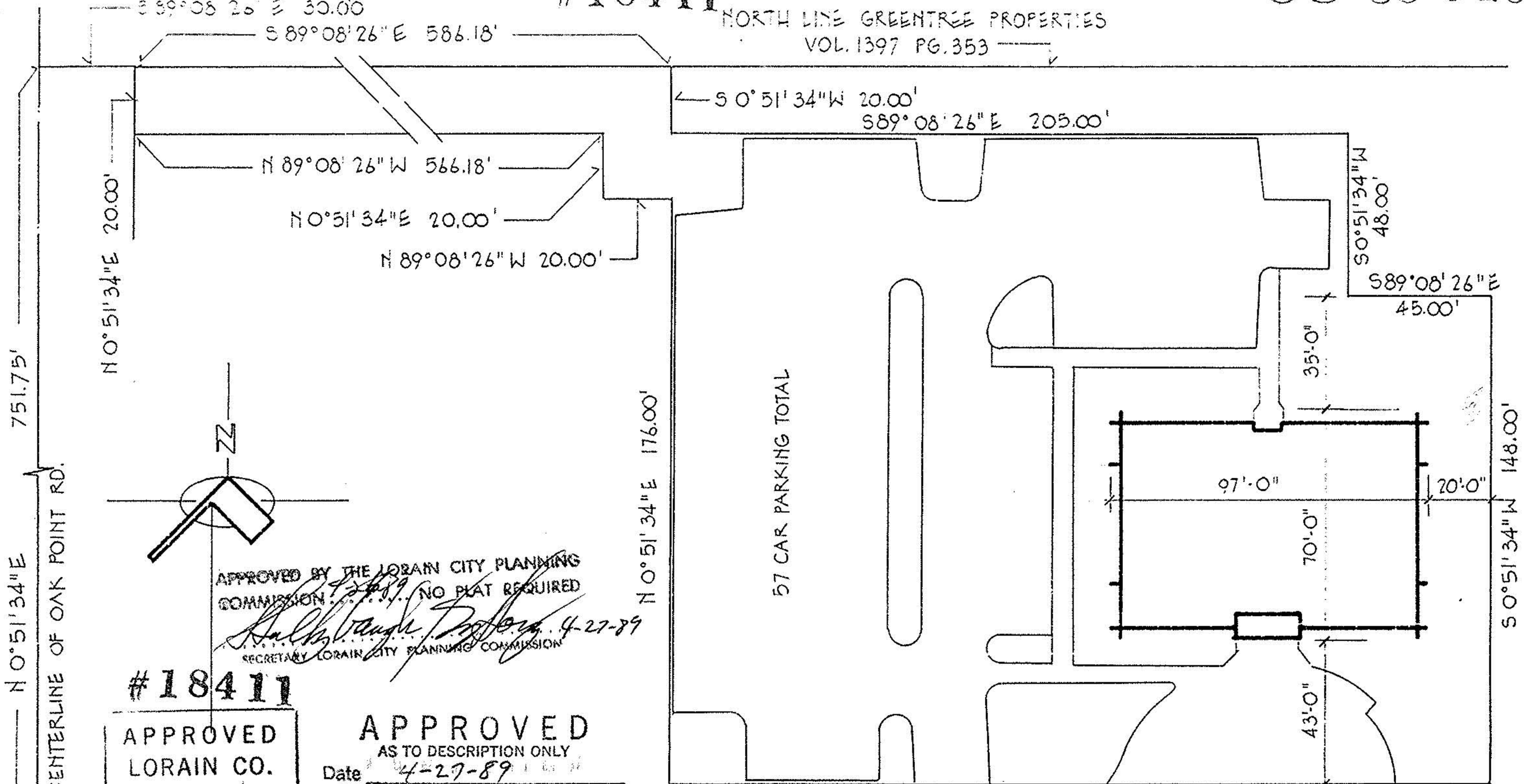


# 18411

NORTH LINE GREENTREE PROPERTIES  
VOL. 1397 PG. 353



751.75'  
CENTERLINE OF OAK POINT RD.  
N 0° 51' 34" E

N 0° 51' 34" E 20.00'

N 89° 08' 26" W 566.18'

N 0° 51' 34" E 20.00'

N 89° 08' 26" W 20.00'

S 0° 51' 34" W 20.00'

S 89° 08' 26" E 205.00'

S 0° 51' 34" W 48.00'

S 89° 08' 26" E 45.00'

N 0° 51' 34" E 176.00'

57 CAR PARKING TOTAL

S 0° 51' 34" W 148.00'

N 89° 08' 26" W 250.00'

APPROVED BY THE LORAIN CITY PLANNING  
COMMISSION... NO PLAT REQUIRED  
*Ralph Vaughn Poffey* 4-27-89  
SECRETARY LORAIN CITY PLANNING COMMISSION

# 18411

APPROVED  
LORAIN CO.  
MAP DEPT.

APPROVED  
AS TO DESCRIPTION ONLY

Date 4-27-89  
Per *Ronell G. Fennell*  
City of Lorain  
Engineering Dept.

DATE 5-2-89

PAGE 5-00-020-A

ORIGINAL CENTERLINE CAROL-FRANCIS  
COOPER FOSTER PARK ROAD

VOID AFTER # 18411

EXHIBIT OF LOT SPLIT  
PART OF O.L. NO. 20, AMHERST TWP.  
CITY OF LORAIN, OHIO

APRIL 1989 SCALE 1"=40'-0"

