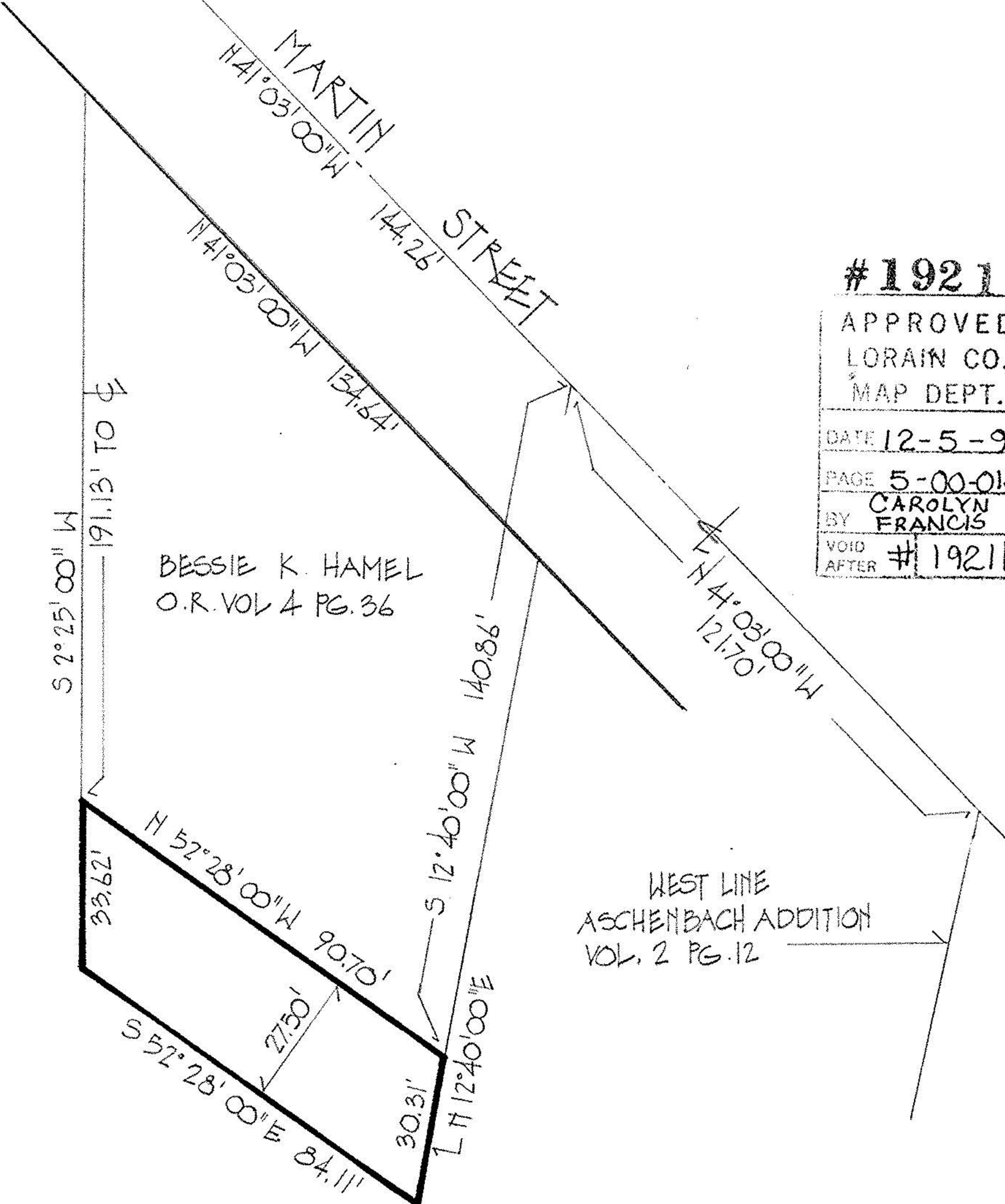


5-00-018-B #19211 05-00-018-100

norman r. hura & associates

development consultants
4808 edgewood drive
lorain, ohio 44053



BESSIE K. HAMEL
O.R. VOL 4 PG. 36

#19211

APPROVED
LORAIN CO.
MAP DEPT.
DATE 12-5-90
PAGE 5-00-018-B
BY CAROLYN FRANCIS
VOID AFTER #19211

WEST LINE
ASCHENBACH ADDITION
VOL. 2 PG. 12