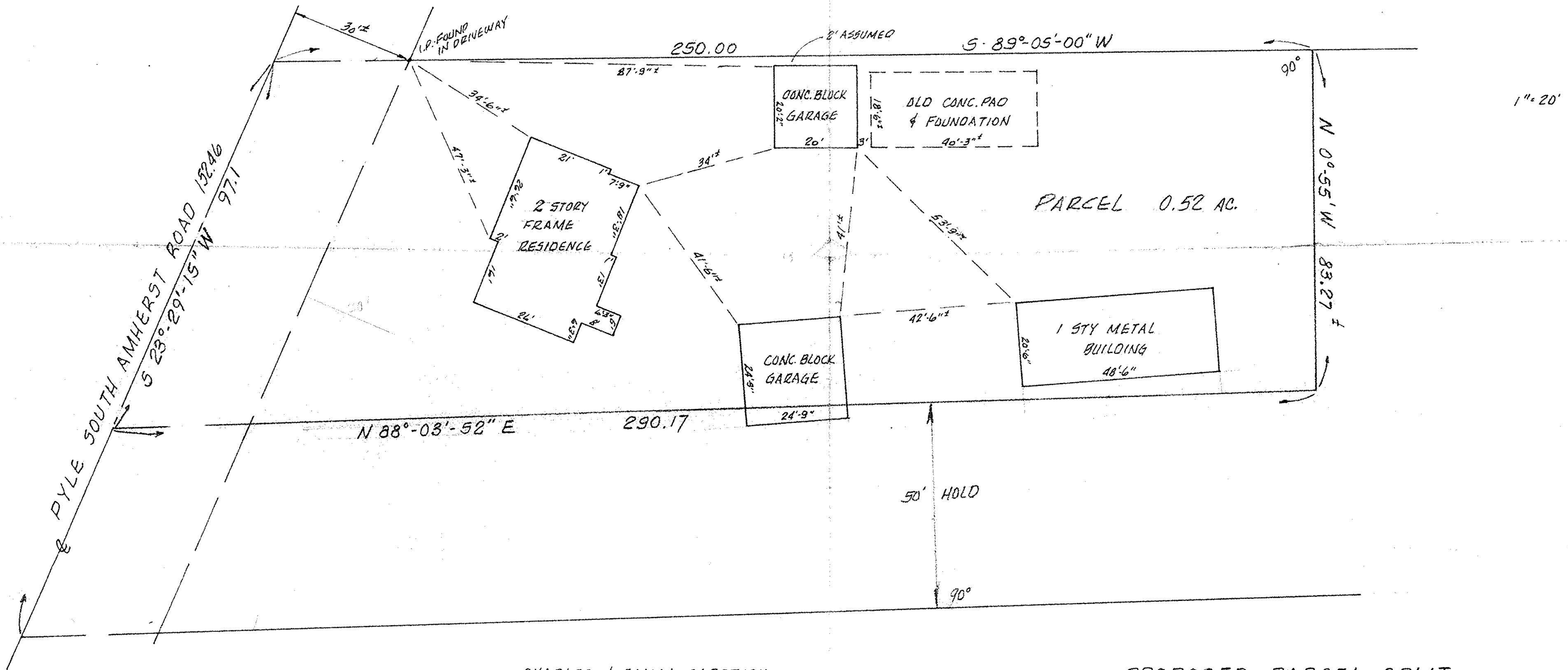


HUDAK, ROBERT J. & ELEANOR M.  
VOL. 937 P.4.3



CHARLES & EMMA CAPSTICK.  
VOL. 463 PAGE 441

PROPOSED PARCEL SPLIT

BUILDING LOCATION PLAN  
P.P. # 05-00-016-102-008 1.47 AC.

LOCATIONS AND DIMENSIONS SHOWN ARE RESULTS OF  
TAPED MEASUREMENTS AND NOT A STAKE SURVEY.

05-00-016-102-

#17435

APPROVED
LORAIN CO.
MAP DEPT.
DATE 5-18-87
PAGE 5-00-016-B
BY C. FRANCIS
VOID AFTER 17435

PREPARED FOR:  
PROFESSIONAL INVESTORS PARTNERSHIP

BY

K. E. McCARTNEY & ASSOCIATES - NORTH  
230 THIRD ST. RM 201 ELYRIA, OHIO

JULY 15, 1986  
REV FOR SPLIT 3/10/87

#86406