

PROPERTY SURVEY

PART OF

ORIGINAL AMHERST TOWNSHIP LOTS 16 & 17
CITY OF AMHERST - COUNTY OF LORAIN - STATE OF OHIO
(FORMER HAAS SUBDIVISION NO. 1 - P.V. 20 P. 43)

David L. Ellwell
REG. SURVEYOR

NORTH
SCALE 1" = 40'

ACREAGE
1.9172
2.7987
1.2529
5.9688 AC. TOTAL TO R/W
6.0102 AC. TOTAL TO E
(6.02 AC. REC.)

#19554
APPROVED
LORAIN CO. MAP DEPT.
DATE 9-17-91
PAGE 5-00-018
BY FRANCIS CAROLIN
VOID WITHOUT SIGNATURE
#19554

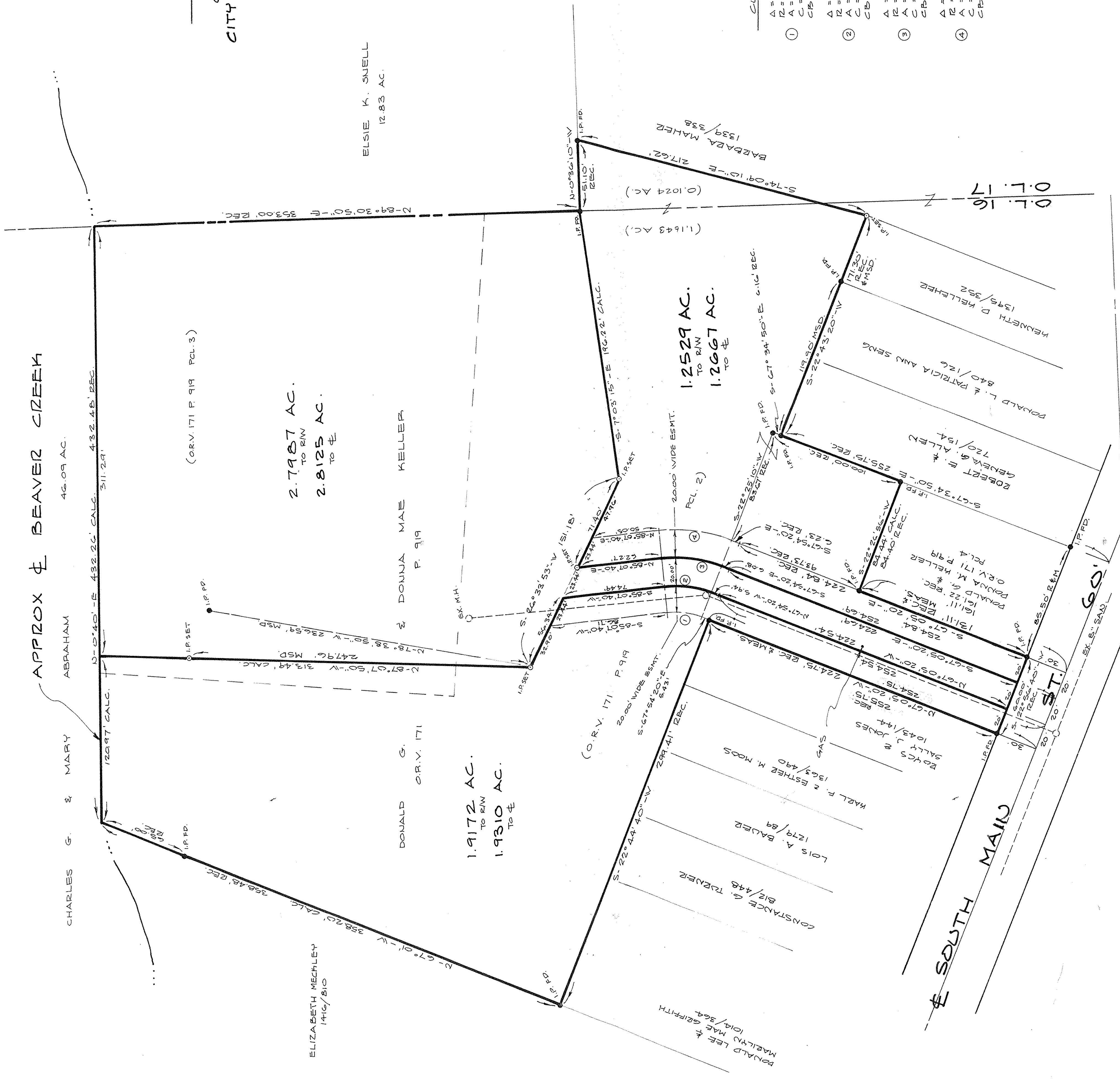
05-00-016-101-



KS ASSOCIATES, INC.
ENGINEERS/SURVEYORS
424 Middle Avenue
P.O. Box 89
Elyria, Ohio 44036
Elyria (216) 322-6317 • Lorain (216) 244-5751

REVISIONS

SHEET 1 OF 1
JOB NO. 88-121



CURVE DATA

1	A = 26° 58'	R = 53.92'
	A = 25.36'	R = 25.14'
	CB = N-81° 23' 20" -V	
2	A = 26° 58'	R = 75.92'
	A = 34.79'	R = 43.80'
	CB = N-81° 23' 20" -V	
3	A = 26° 58'	R = 93.92'
	A = 44.20'	R = 53.62'
	CB = S-81° 23' 20" -E	
4	A = 26° 58'	R = 113.92'
	A = 53.12'	R = 53.12'
	CB = S-81° 23' 20" -E	

ELSIE K. SUELL
12.83 AC.

DOUNJA MAE KELLER
P. 919

1.9172 AC.
TO R/W
1.9310 AC.
TO E

1.2529 AC.
TO R/W
1.2667 AC.
TO E

2.7987 AC.
TO R/W
2.8125 AC.
TO E

CHARLES G. & MARY ABRAHAM
46.09 AC.

(ORV. 171 P. 919 PCL. 3)

(ORV. 171 P. 919 PCL. 2)

ELIZABETH MECHLEY
1410/810

DONALD G. ORV. 171

LOIS A. BAUER
1279/89

CONSTANCE G. TURNER
812/448

HAEL F. & ESTHER M. MOOS
1305/490

ROYCE & JODES
1043/44

ROBERT E. & ALLEN
720/154

DONALD L. & PATRICIA ANN SENG
840/126

KENNETH D. HELLEBER
1378/332

BARBARA MAHER
1339/338

(1.1643 AC.)

O.L. 16

O.L. 17

SOUTH MAIN ST.

APPROX & BEAVER CREEK