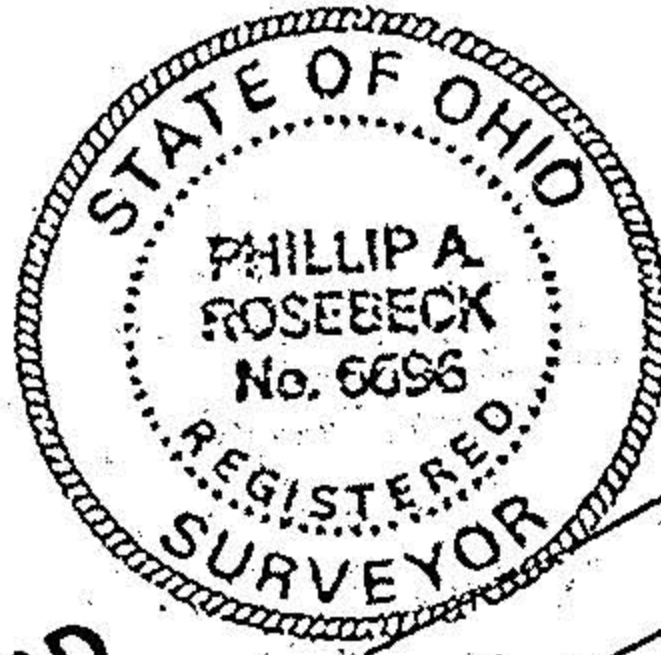
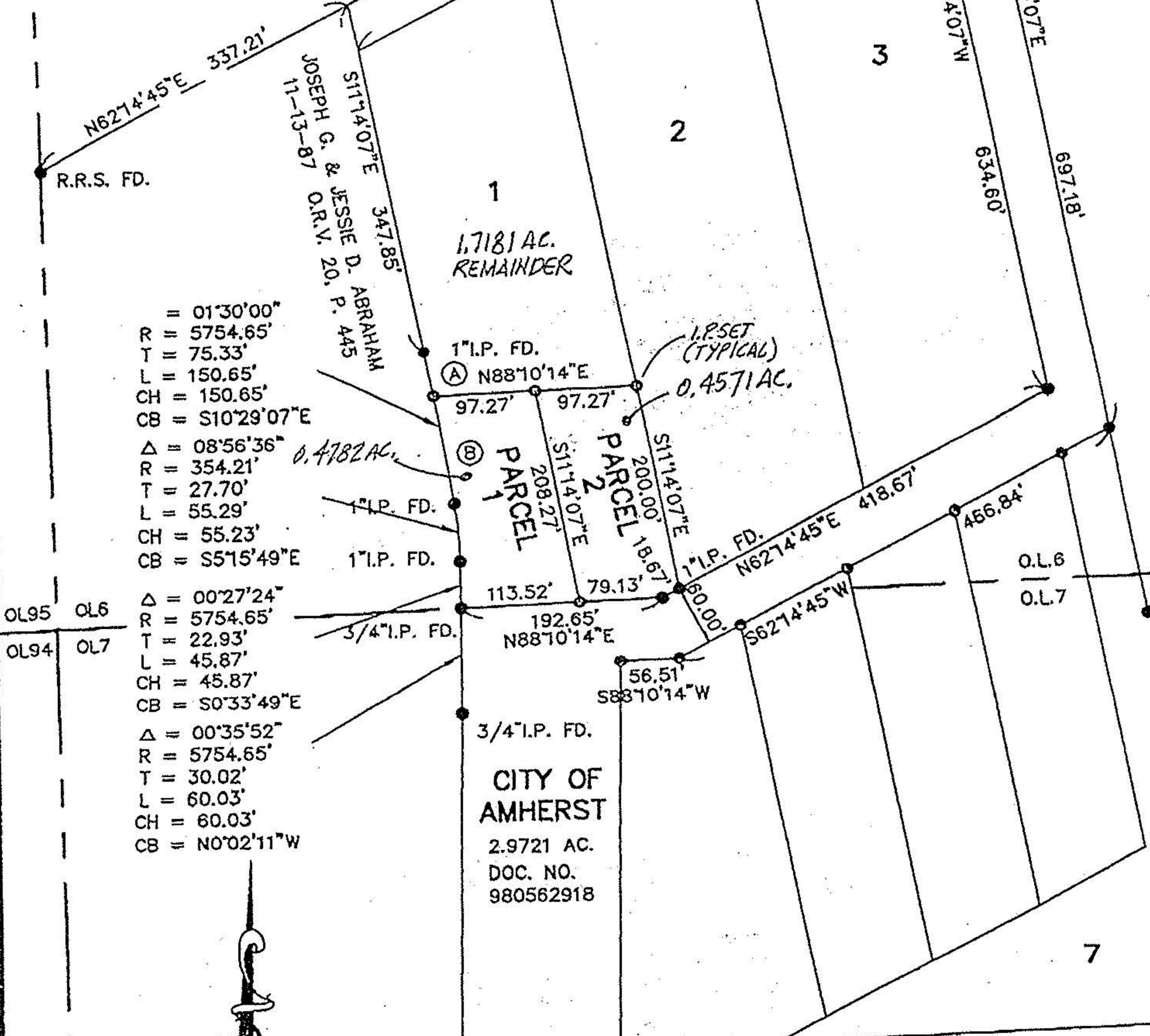


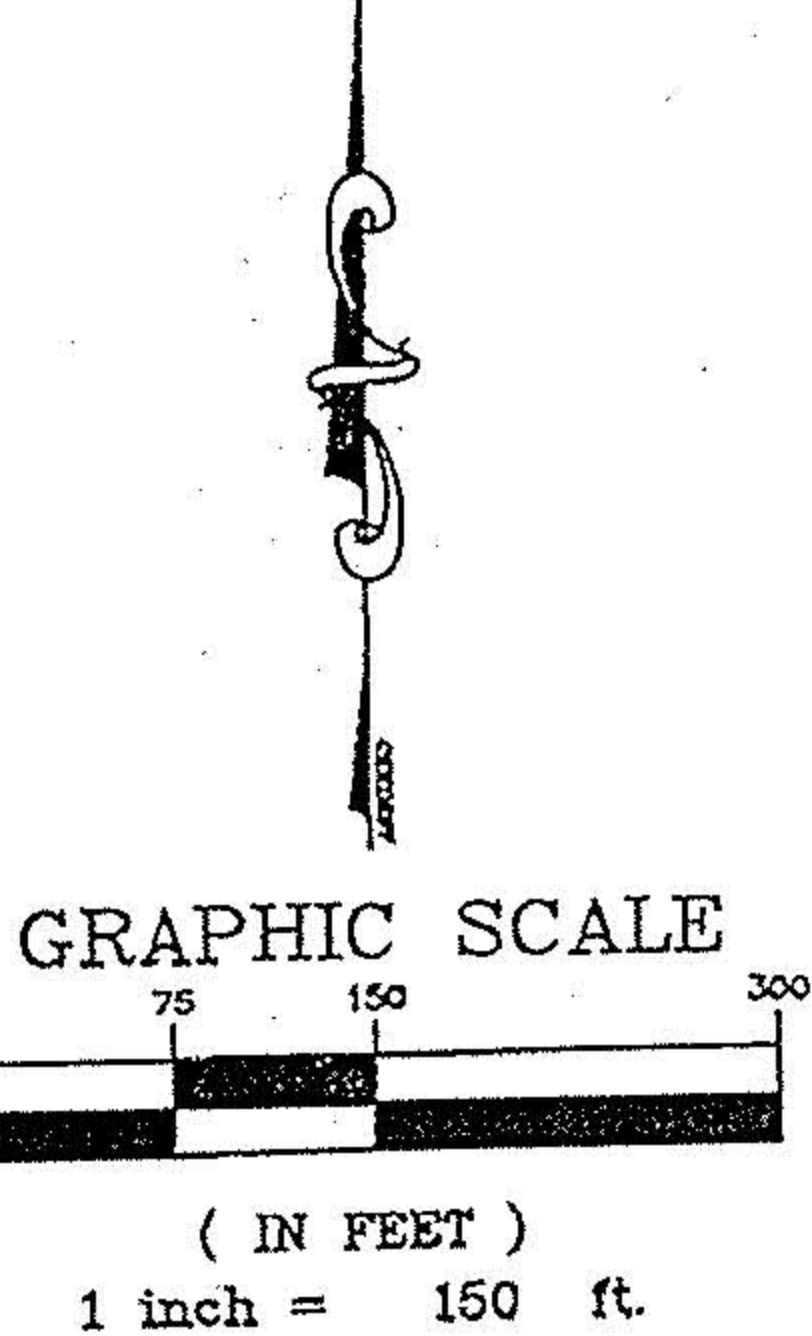
(A) $\Delta = 00^{\circ}28'15''$ (B) $\Delta = 01^{\circ}01'45''$
 $R = 5754.65'$ $R = 5754.65'$
 $T = 23.65'$ $T = 51.68'$
 $L = 47.29'$ $L = 103.36'$
 $CH = 47.29'$ $CH = 103.36'$
 $S11^{\circ}00'00''E$ $S10^{\circ}15'00''E$



MIDDLE RIDGE ROAD



$R = 5754.65'$
 $T = 75.33'$
 $L = 150.65'$
 $CH = 150.65'$
 $CB = S10^{\circ}29'07''E$
 $\Delta = 08^{\circ}56'36''$
 $R = 354.21'$
 $T = 27.70'$
 $L = 55.29'$
 $CH = 55.23'$
 $CB = S5^{\circ}15'49''E$
 $\Delta = 00^{\circ}27'24''$
 $R = 5754.65'$
 $T = 22.93'$
 $L = 45.87'$
 $CH = 45.87'$
 $CB = S0^{\circ}33'49''E$
 $\Delta = 00^{\circ}35'52''$
 $R = 5754.65'$
 $T = 30.02'$
 $L = 60.03'$
 $CH = 60.03'$
 $CB = N0^{\circ}02'11''W$



SURVEY MAP FOR JOHN JOHNSON
 PART OF S/L 1 MIDDLE RIDGE SUB., P.V.47, P.47
 PART OF O.L.6 & 7 AMHERST TOWNSHIP
 CITY OF AMHERST, LORAIN COUNTY, OHIO
 SCALE 1"=150' OCT. 2, 2000
 P.A.ROSEBECK & ASSOCIATES
 REGISTERED SURVEYOR
 705 WILLOW CREEK DRIVE
 AMHERST, OHIO 44001