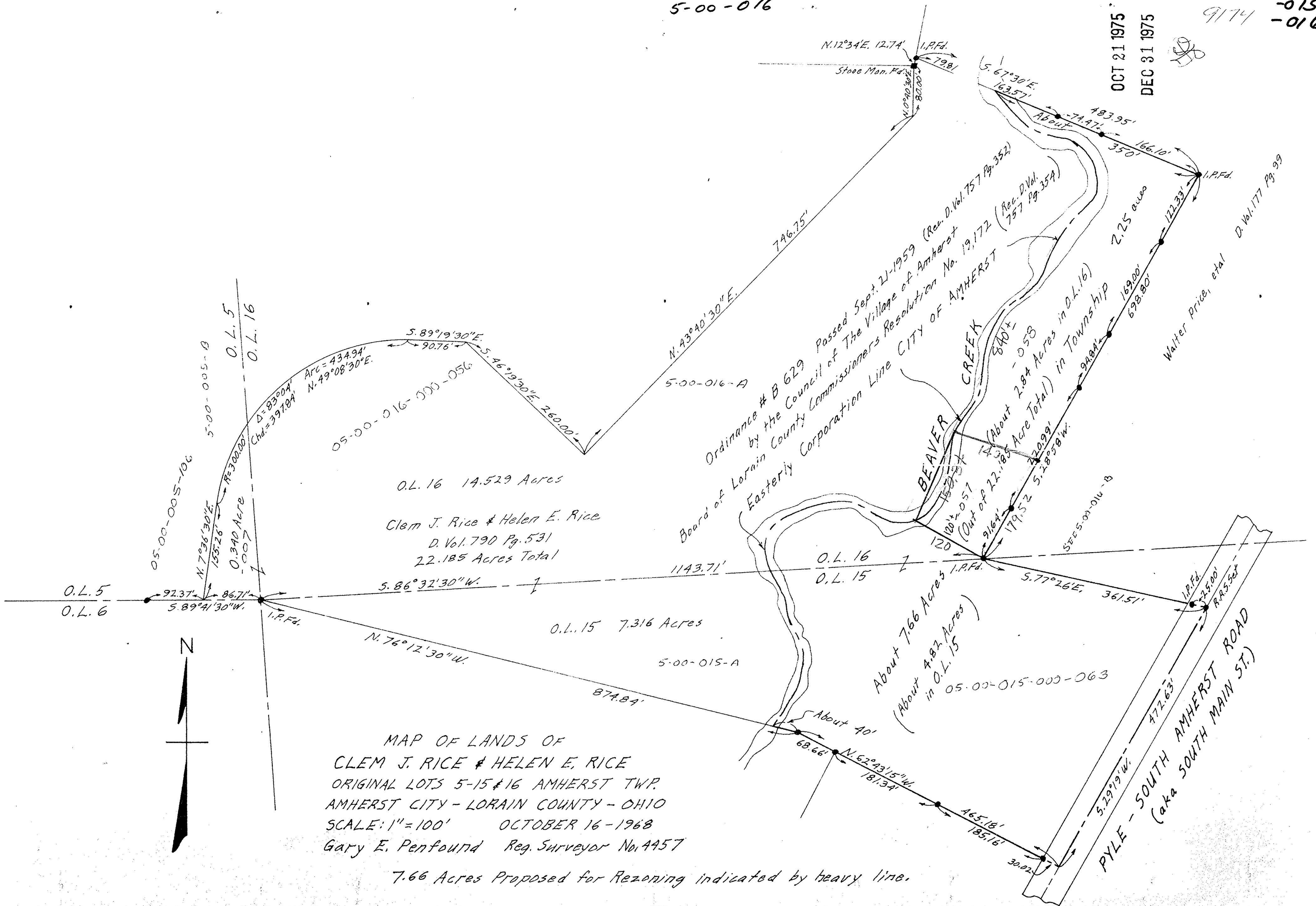


5-00-005  
 5-00-015  
 5-00-016

5-00-005  
 -015  
 -016  
 9174

OCT 21 1975  
 DEC 31 1975



MAP OF LANDS OF  
 CLEM J. RICE & HELEN E. RICE  
 ORIGINAL LOTS 5-15 & 16 AMHERST TWP.  
 AMHERST CITY - LORAIN COUNTY - OHIO  
 SCALE: 1" = 100'      OCTOBER 16 - 1968  
 Gary E. Penfound Reg. Surveyor No. 4457

7.66 Acres Proposed for Rezoning indicated by heavy line.

Ordinance # B 629 Passed Sept. 21-1959 (Rec. D. Vol. 757 Pg. 352)  
 by the Council of The Village of Amherst  
 Board of Lorain County Commissioners Resolution No. 19,172 (Rec. D. Vol. 757 Pg. 354)  
 Easterly Corporation Line CITY OF AMHERST  
 BEAVER CREEK  
 (About 2.84 Acres in O.L. 16)  
 (About 2.18 Acres Total) in Township  
 Walter Price, et al D. Vol. 177 Pg. 99