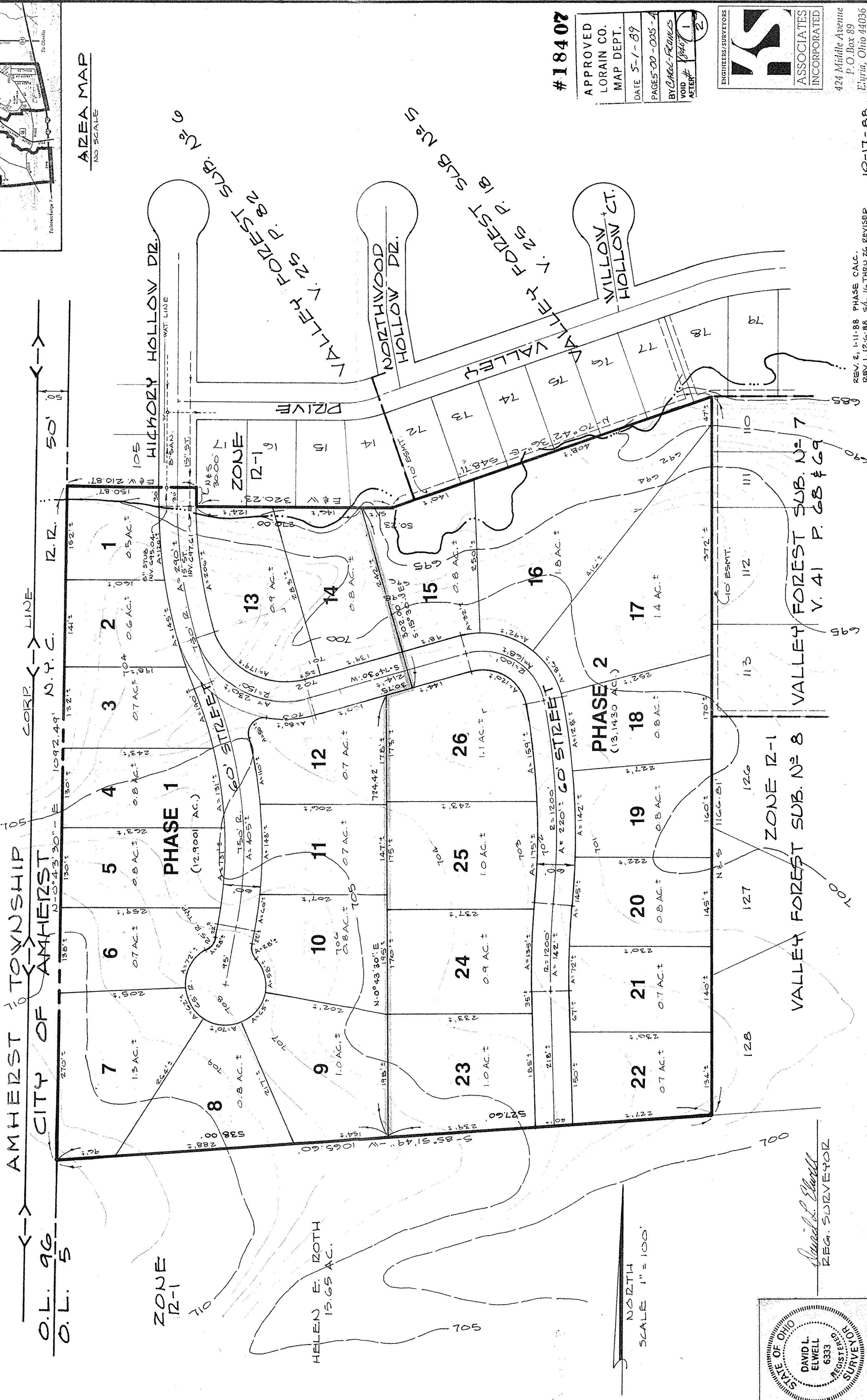


HICKORY HOLLOW ESTATES - PHASE 1 & 2 PRELIMINARY PLAN

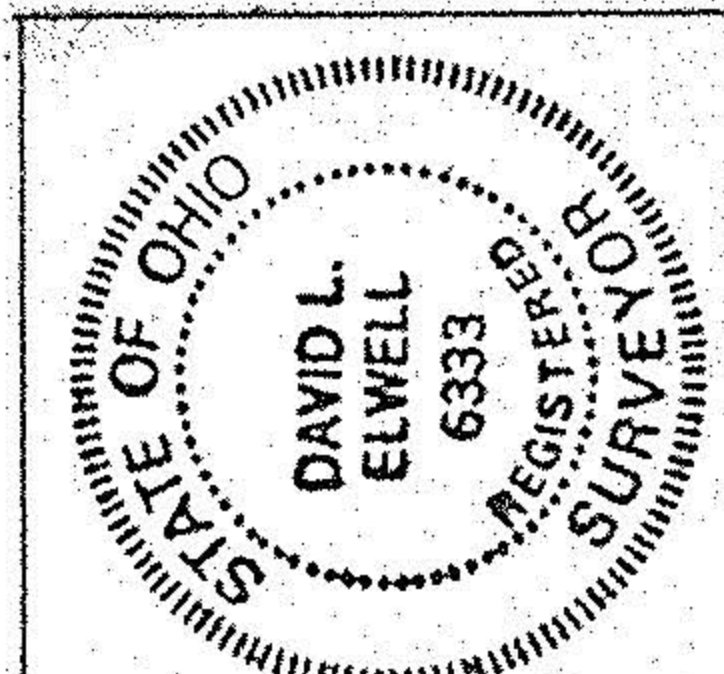
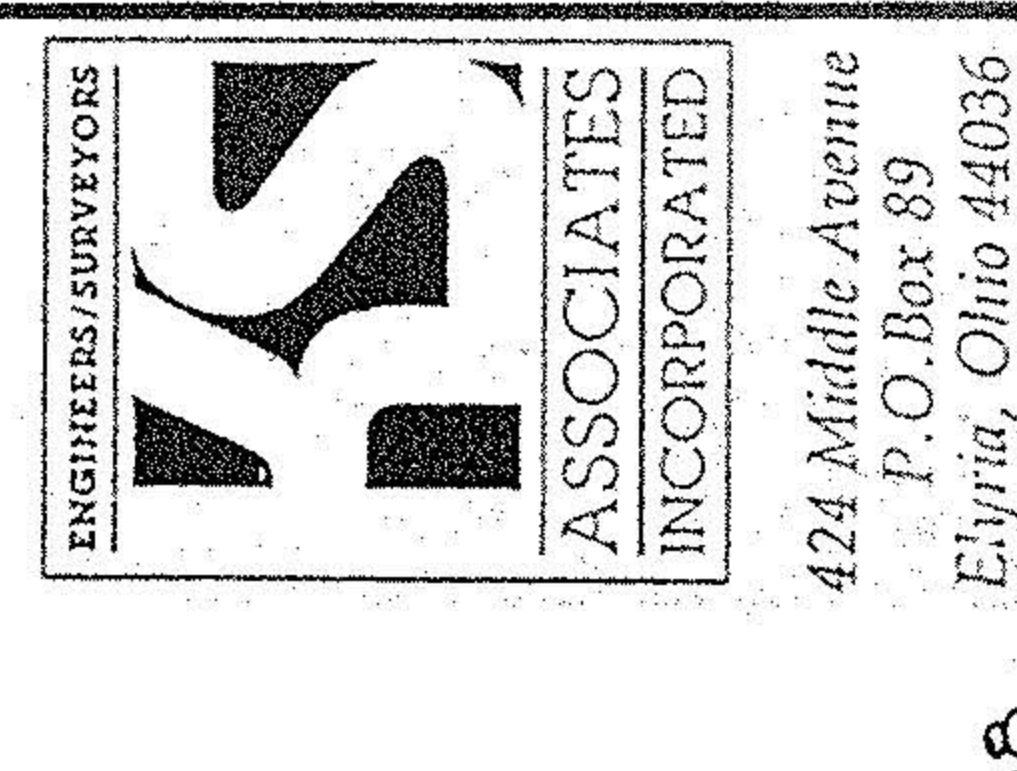
AMHERST TOWNSHIP ORIGINAL LOT N^o 5
CITY OF AMHERST - COUNTY OF LORAIN - STATE OF OHIO
(PROPERTY IS ZONED R-1, AREA = 26.0 AC.)

BEING PART OF
PREPARED FOR: SOLID GOLD DEVELOPMENT CO.
10209 PARKWAY DR.
VERMILION, OHIO 44089

- NOTES:
1. MINIMUM LOT AREA REQUIREMENTS ARE 13,500 S.F. MINIMUM FRONTAGE IS 10 FEET EXCEPT FOR ZONED STREETS & EASEMENTS. SET-BACKS: BUILDING, LINE IS 35 FEET.
 2. BOUNDARY DIMENSIONS SHOWN HEREON WERE TAKEN FROM DEED & TAX MAP DATA.
 3. THE TOPOGRAPHY SHOWN HEREON WAS REPRODUCED FROM A UNITED GEODETIC SURVEY MAP.
 4. SEE SHEET N^o 2 FOR PROPOSED UTILITIES.



#18407
APPROVED
LORAIN CO.
MAP DEPT.
DATE 5-1-89
PAGES 00-005-4
BY CAROL-FRANKS
VOID AFTER #18407
2



REV. 2, 1-11-88 PHASE CALC.
REV. 1, 12-5-88 5/16 THRU 26 REVISED
10-11-88
88-373