

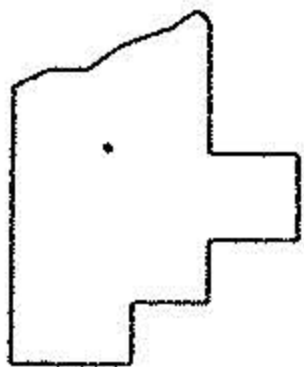
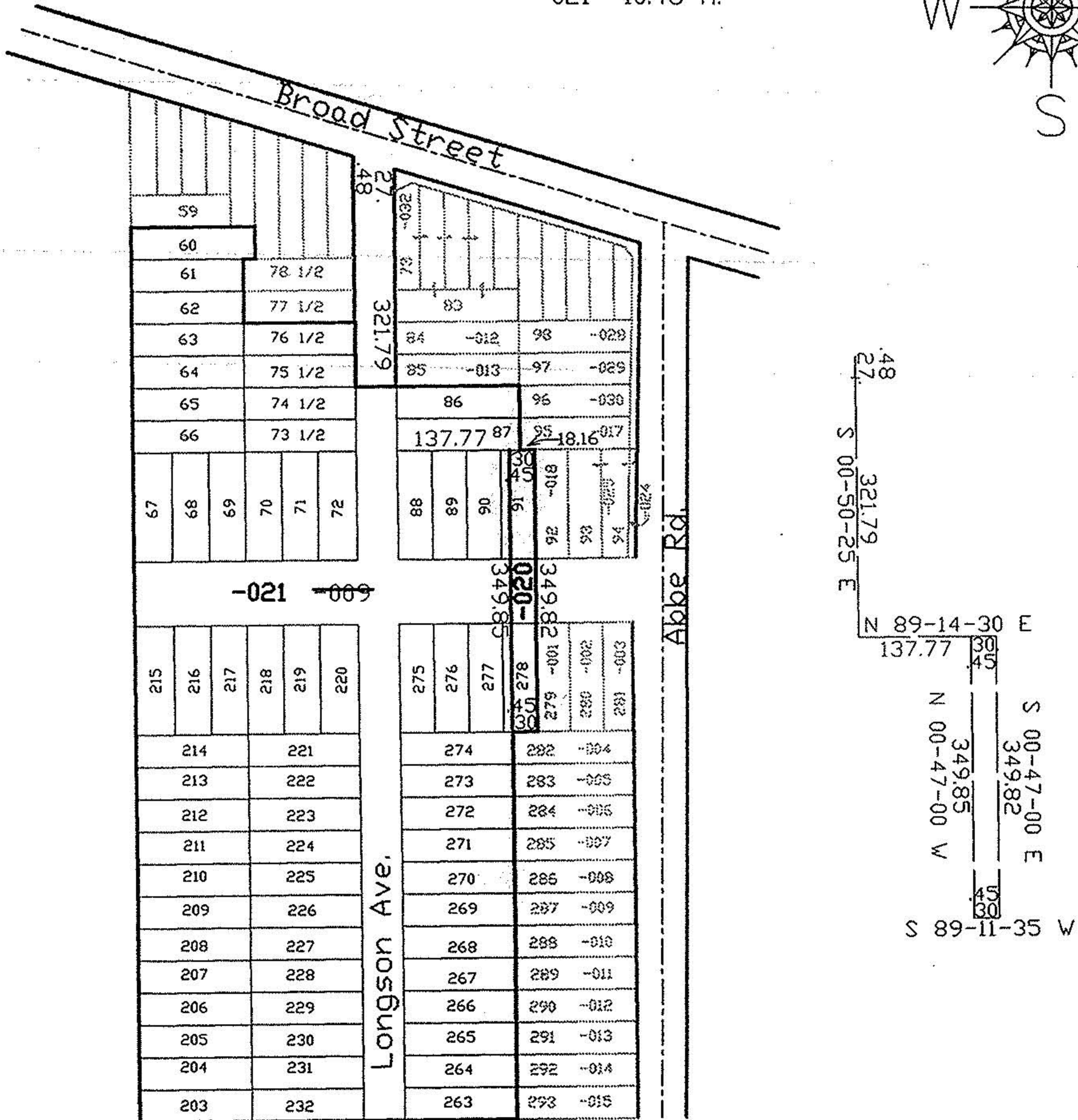
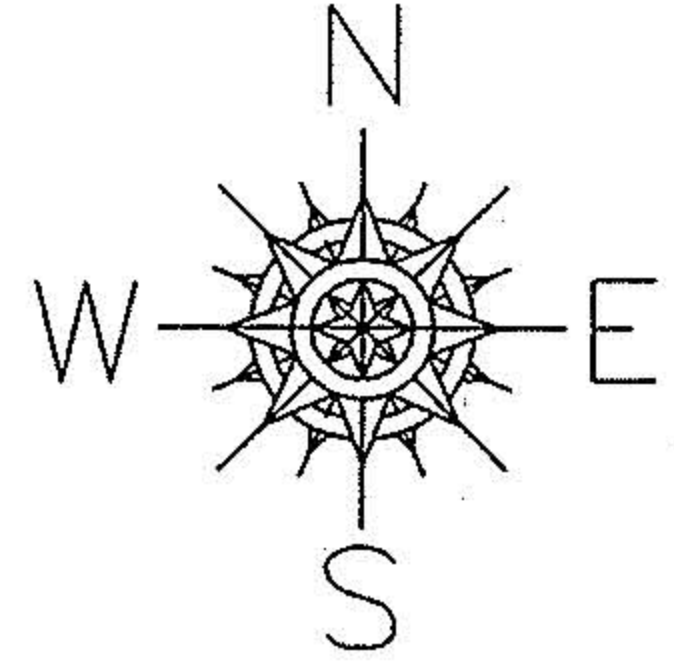
PARENT PARCEL: 06-25-006-112-009

CHILD PARCEL: 06-25-006-112-020, 021

STARTING POINT: S. line of Brood St. & E. line of Longson Ave.

#22443
NO. 22443

Out of: -009 10.70 A.
Into: -020 0.24 A.
-021 10.46 A.



SPLITS/DEEDS PROCESSED
LORAIN COUNTY TAX MAP DEPARTMENT
226 MIDDLE AVE. ELYRIA, OHIO

SURVEYED BY: Phil Rosebeck
CLOSURE: 0.05:10.000
MAP PAGE(S): 6-124
APPROVED BY: kac DATE: 2/25/98
SCALE: 1" = 200 PRIOR INSTRUMENT: Vac Ord 59-156