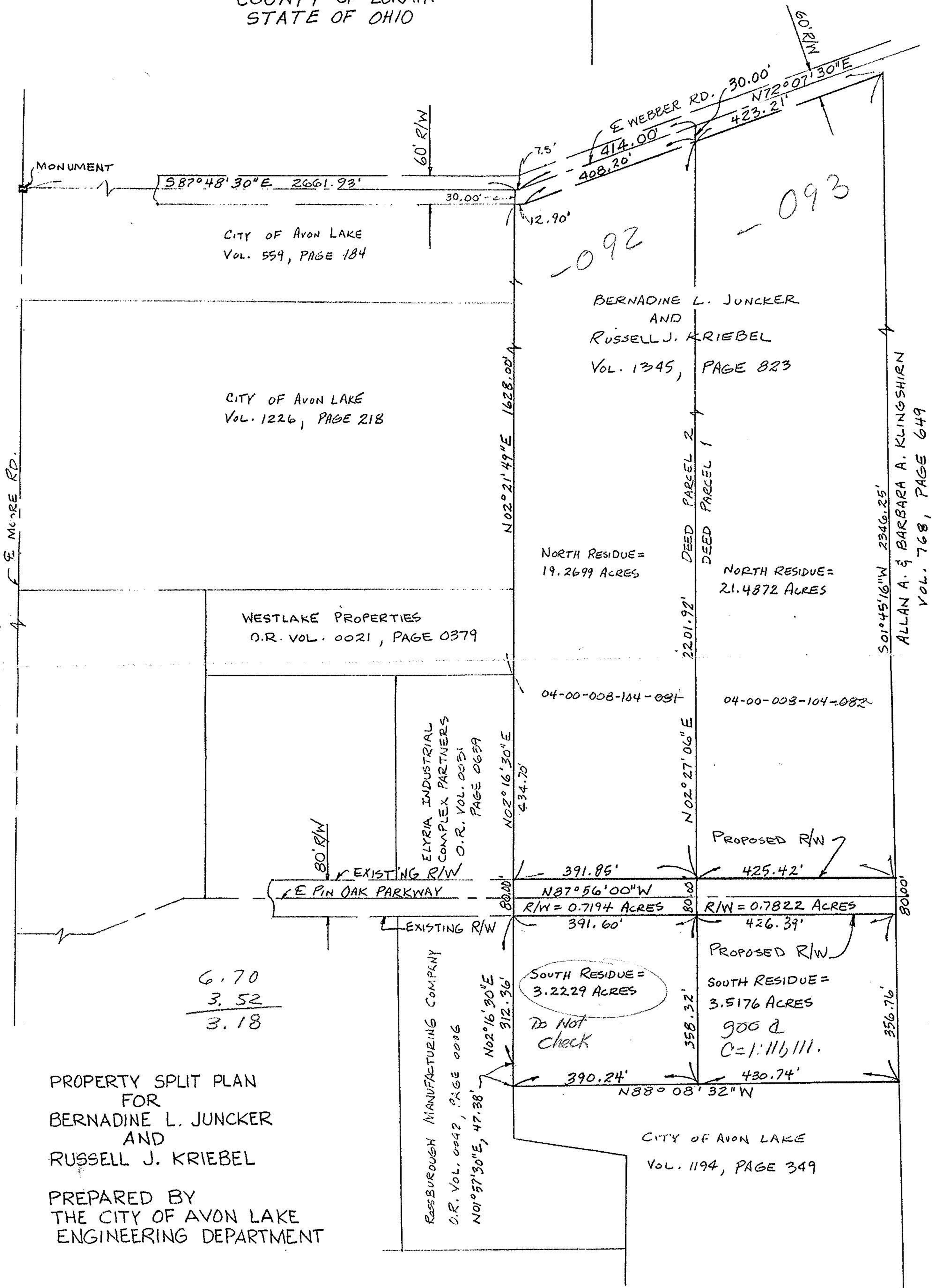


CITY OF AVON LAKE
ORIGINAL AVON TOWNSHIP SECTION NO. 8
COUNTY OF LORAIN
STATE OF OHIO



CITY OF AVON LAKE
Vol. 559, PAGE 184

CITY OF AVON LAKE
Vol. 1226, PAGE 218

BERNADINE L. JUNCKER
AND
RUSSELL J. KRIEBEL
Vol. 1345, PAGE 823

WESTLAKE PROPERTIES
O.R. VOL. 0021, PAGE 0379

ELYRIA INDUSTRIAL
COMPLEX PARTNERS
O.R. VOL. 0031
PAGE 0639

REASBROUGH MANUFACTURING COMPANY
O.R. Vol. 0042, PAGE 0006
N01°57'30"E, 47.38'

CITY OF AVON LAKE
Vol. 1194, PAGE 349

NORTH RESIDUE =
19.2699 ACRES

NORTH RESIDUE =
21.4872 ACRES

04-00-008-104-081

04-00-008-104-082

EXISTING R/W
E PIN OAK PARKWAY
R/W = 0.7194 ACRES

PROPOSED R/W
R/W = 0.7822 ACRES

SOUTH RESIDUE =
3.2229 ACRES

PROPOSED R/W
SOUTH RESIDUE =
3.5176 ACRES

Do Not
check

900 @
C=1:116,111.

6.70
3.52
3.18

PROPERTY SPLIT PLAN
FOR
BERNADINE L. JUNCKER
AND
RUSSELL J. KRIEBEL

PREPARED BY
THE CITY OF AVON LAKE
ENGINEERING DEPARTMENT