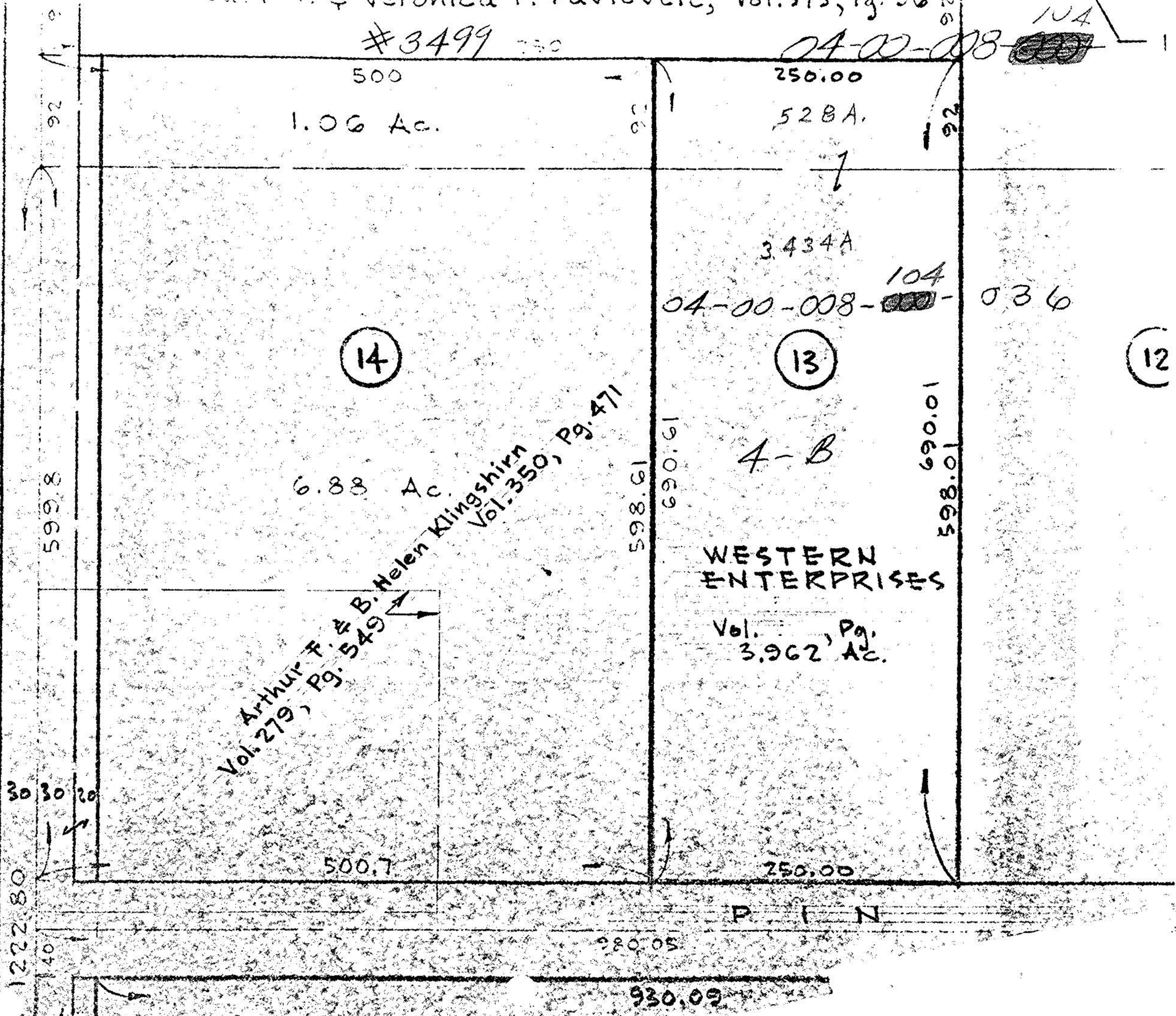


A-B

#3499

04-00-008-104

ROAD



500
1.06 Ac.

250.00
528A.

14

6.88 Ac.
Arthur F. & B. Helen Klingshirn
Vol. 350, Pg. 471
Arthur F. & B. Helen Klingshirn
Vol. 279, Pg. 549

13

WESTERN
ENTERPRISES
Vol. 3.962, Pg. 3.962 AC.

12

599.8

30 30 20

1222.80

140

598.61

690.61

690.01
598.01

500.7

250.00

980.05

930.09

P I N