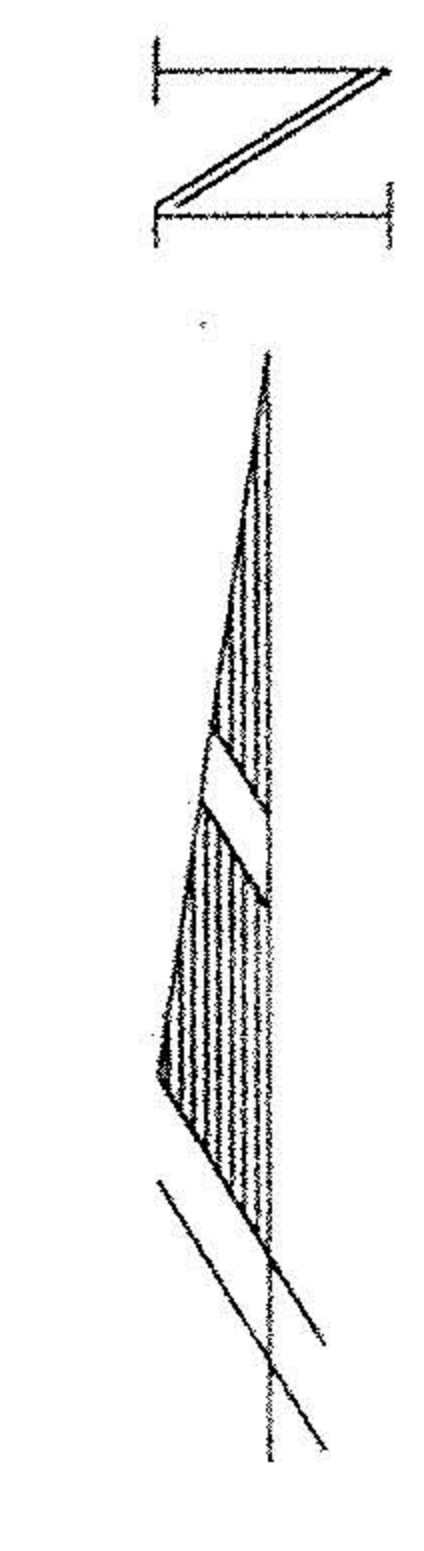


SURVEY MAP

OF
GEON COMPANY LANDS
TO
BF GOODRICH COMPANY
AVON LAKE, OHIO

PART OF
AVON TOWNSHIP LOT 5 COUNTY OF LORAIN STATE OF OHIO

BY
MICHAEL ZUNICH & ASSOCIATES
J. R. FOOR & ASSOCIATES
35888 CENTER RIDGE ROAD
NORTH RIDGEVILLE, OHIO 44039



JANUARY 18, 1996
Revised: JAN 24, 1996
Revised: JAN 26, 1996
Revised: MAR 12, 1996

$\Delta = 1739.06"$
 $R = 1408.70"$
 $T = 218.73"$
 $L = 433.99"$
 $C = 432.28"$
 $CB = N 08^{\circ}36'29" E$

$\Delta = 3403.37"$
 $R = 1462.70"$
 $T = 448.03"$
 $L = 869.52"$
 $C = 856.77"$
 $CB = N 16^{\circ}48'44" E$

$\Delta = 2507.05"$
 $R = 586.39"$
 $T = 130.63"$
 $L = 257.07"$
 $C = 255.02"$
 $CB = S 12^{\circ}25'56" W$

$\Delta = 7000.32"$
 $R = 515.96"$
 $T = 361.34"$
 $L = 630.44"$
 $C = 591.95"$
 $CB = N 42^{\circ}16'55" E$

$\Delta = 8957.00"$
 $R = 108.00"$
 $T = 107.91"$
 $L = 159.57"$
 $C = 159.57"$
 $CB = N 45^{\circ}06'44" W$

$\Delta = 9002.20"$
 $R = 111.00"$
 $T = 174.43"$
 $L = 157.03"$
 $C = 157.03"$
 $CB = N 45^{\circ}11'20" W$

$\Delta = 8953.40"$
 $R = 40.00"$
 $T = 39.93"$
 $L = 62.76"$
 $C = 56.52"$
 $CB = S 44^{\circ}54'11" W$

$\Delta = 0953.56"$
 $R = 1468.30"$
 $T = 127.20"$
 $L = 253.76"$
 $C = 253.45"$
 $CB = N 12^{\circ}29'03" E$

$\Delta = 1739.06"$
 $R = 1408.70"$
 $T = 218.73"$
 $L = 433.99"$
 $C = 432.28"$
 $CB = N 08^{\circ}36'29" E$

$\Delta = 1739.06"$
 $R = 1408.70"$
 $T = 218.73"$
 $L = 433.99"$
 $C = 432.28"$
 $CB = N 08^{\circ}36'29" E$

$\Delta = 1739.06"$
 $R = 1408.70"$
 $T = 218.73"$
 $L = 433.99"$
 $C = 432.28"$
 $CB = N 08^{\circ}36'29" E$

$\Delta = 1739.06"$
 $R = 1408.70"$
 $T = 218.73"$
 $L = 433.99"$
 $C = 432.28"$
 $CB = N 08^{\circ}36'29" E$

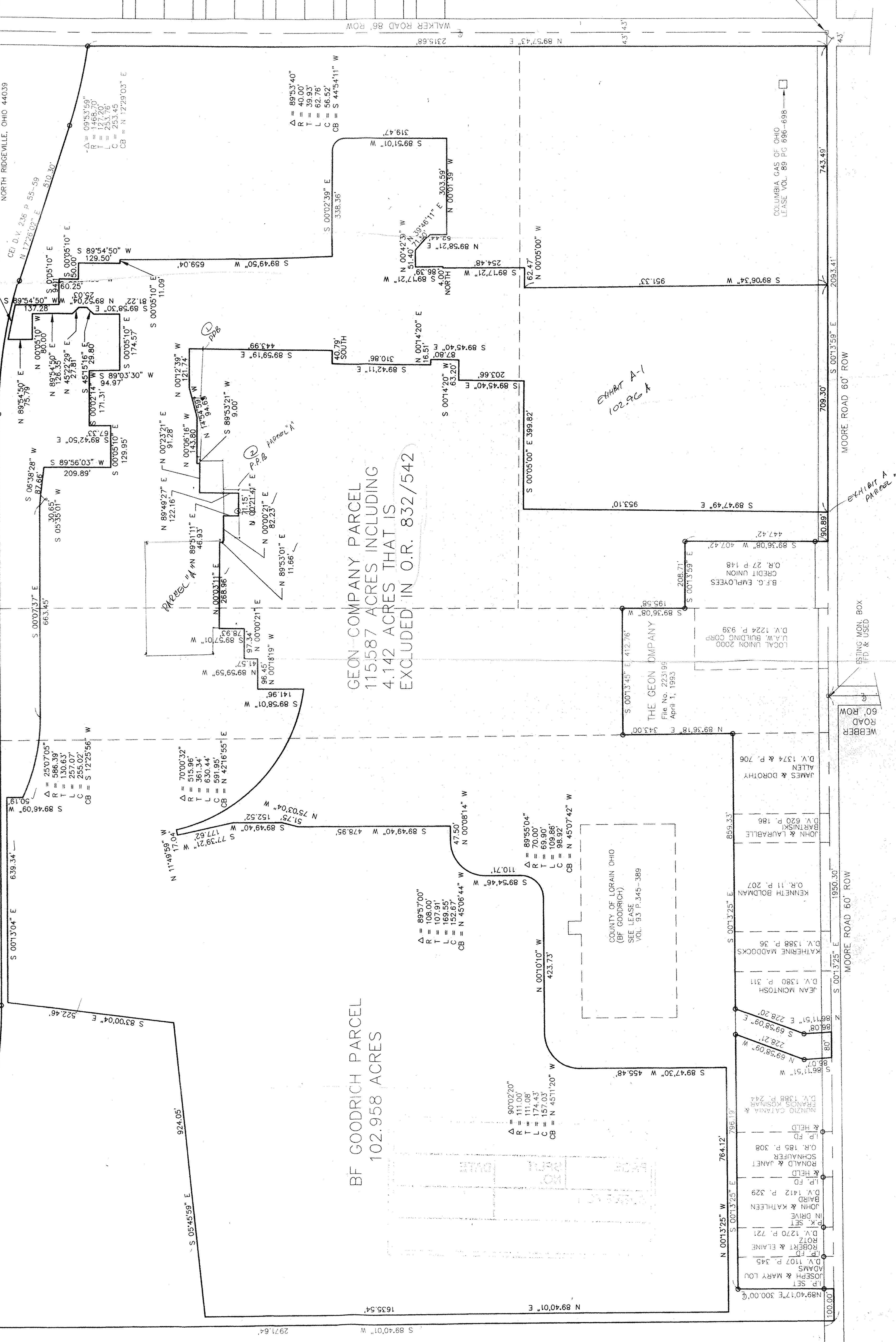
$\Delta = 1739.06"$
 $R = 1408.70"$
 $T = 218.73"$
 $L = 433.99"$
 $C = 432.28"$
 $CB = N 08^{\circ}36'29" E$

$\Delta = 1739.06"$
 $R = 1408.70"$
 $T = 218.73"$
 $L = 433.99"$
 $C = 432.28"$
 $CB = N 08^{\circ}36'29" E$

$\Delta = 1739.06"$
 $R = 1408.70"$
 $T = 218.73"$
 $L = 433.99"$
 $C = 432.28"$
 $CB = N 08^{\circ}36'29" E$

$\Delta = 1739.06"$
 $R = 1408.70"$
 $T = 218.73"$
 $L = 433.99"$
 $C = 432.28"$
 $CB = N 08^{\circ}36'29" E$

$\Delta = 1739.06"$
 $R = 1408.70"$
 $T = 218.73"$
 $L = 433.99"$
 $C = 432.28"$
 $CB = N 08^{\circ}36'29" E$



22058

APPROVED
LORAIN CO.
MAP DEPT.
DATE 1-31-97
PAGE 4-A
BY P. BELL
CHECKED AT 122058

EXISTING MON. BOX
IF PD & USED

COLUMBIA GAS OF OHIO
LEASE VOL. 89 PG 696-698

EXHIBIT A-1
102.958

EXHIBIT A
PARCEL 74

GEON COMPANY PARCEL
115.587 ACRES INCLUDING
4.142 ACRES THAT IS
EXCLUDED IN O.R. 832/542

BF GOODRICH PARCEL
102.958 ACRES

MARY BANDJOFF
D.V. 794 PAGE 518