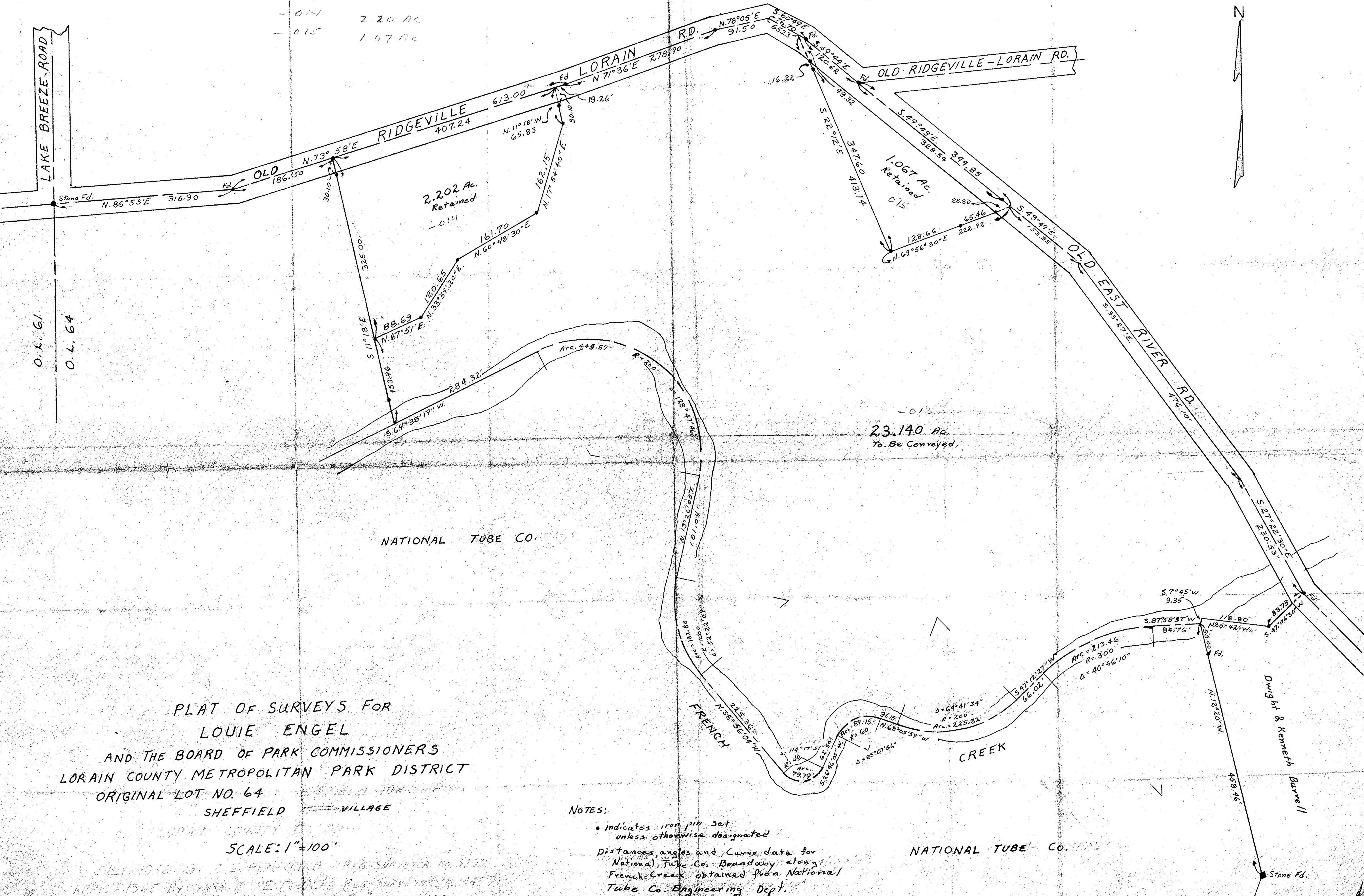


013 = 23.14 AC
 - 014 2.20 AC
 - 015 1.07 AC



PLAT OF SURVEYS FOR
 LOUIE ENGEL
 AND THE BOARD OF PARK COMMISSIONERS
 LORAIN COUNTY METROPOLITAN PARK DISTRICT
 ORIGINAL LOT NO. 64
 SHEFFIELD VILLAGE

SCALE: 1"=100'

NOTES:

- indicates iron pin set unless otherwise designated
- Distances angles and Curve data for National, Tube Co. Boundary along French Creek obtained from National Tube Co. Engineering Dept.

NATIONAL TUBE CO. 1957

FILED 1956 BY GARY E. PENFOUND REG. SURVEYOR NO. 2209
 APRIL 1965 BY GARY E. PENFOUND REG. SURVEYOR NO. 4457
 REVISED AUGUST - 1965 BY GARY E. PENFOUND