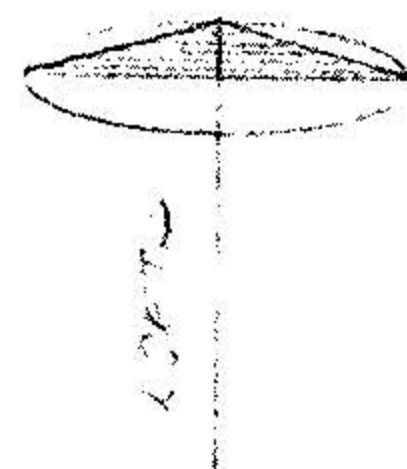


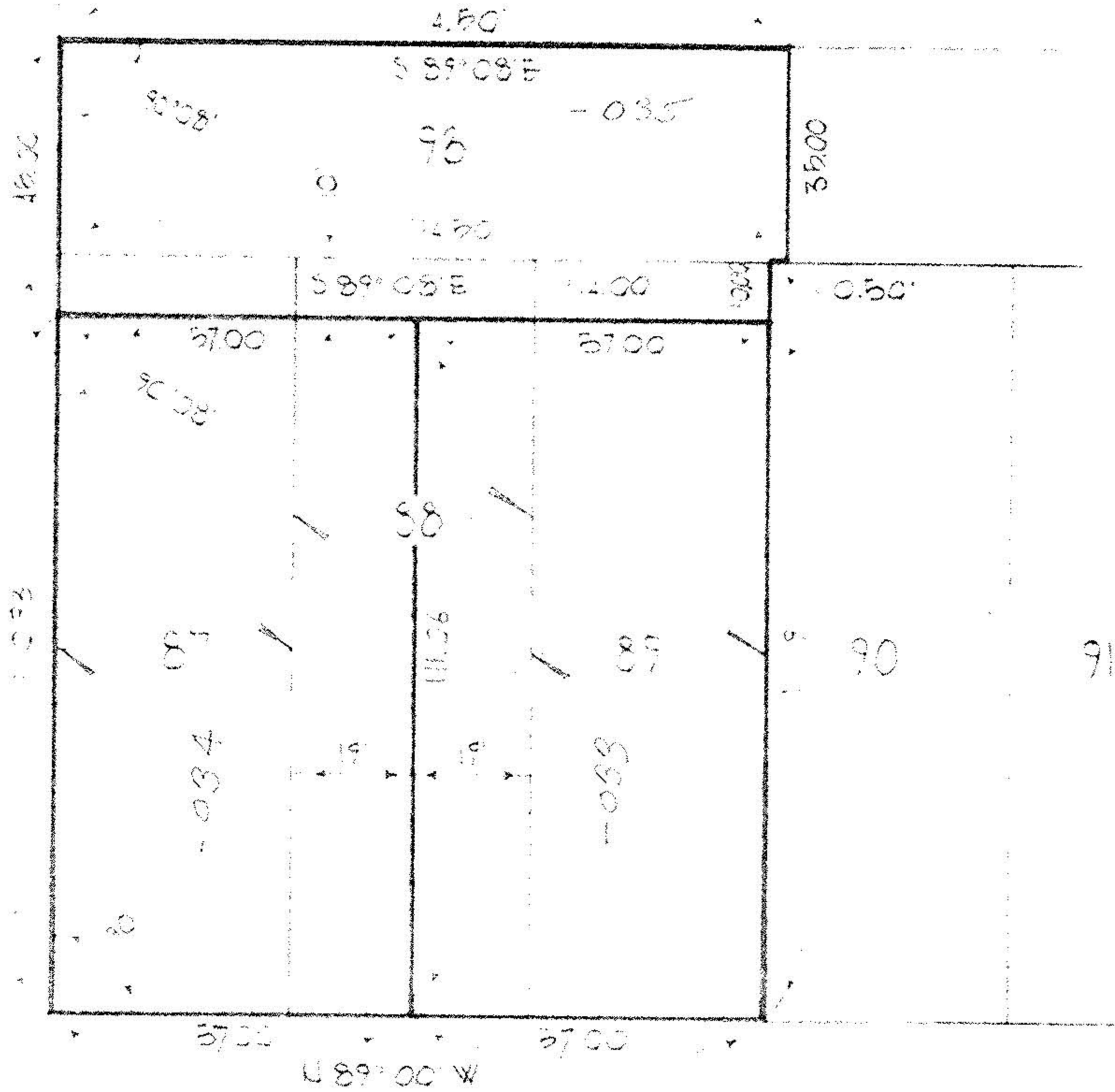
108 CG



3-00-053-A

MAIZE AVE 50'

N 1° 00' E



COLORADO AVE 60'

PROPERTY SPLIT OF LOTS
87, 88, 89 OF THE COLORADO PARK

APPROVED BY THE LORAIN CITY PLANNING COMMISSION VOL. 9 PAGE 12

COMMISSIONER... NO PLAT REQUIRED
Larry B. Rodgers
SECRETARY LORAIN CITY PLANNING COMMISSION

OF ORIGINAL SHEFFIELD TOWNSHIP
1.4 58, LORAIN OHIO

Dwight G. Kneisel Engr. Dept

JULY 27 1977

053