

We the undersigned mortgagees of the land shown on this plat do hereby accept this dedication of the same and agree to release from the operation of the mortgage the road shown in red.

We the undersigned owners in fee simple of the land shown on this plat hereby dedicate to public use as a legal highway the land shown hereon in red shade.

State of Ohio.
County of Lorain S.S. Before me a County Surveyor in and for said County personally appeared the afore named.

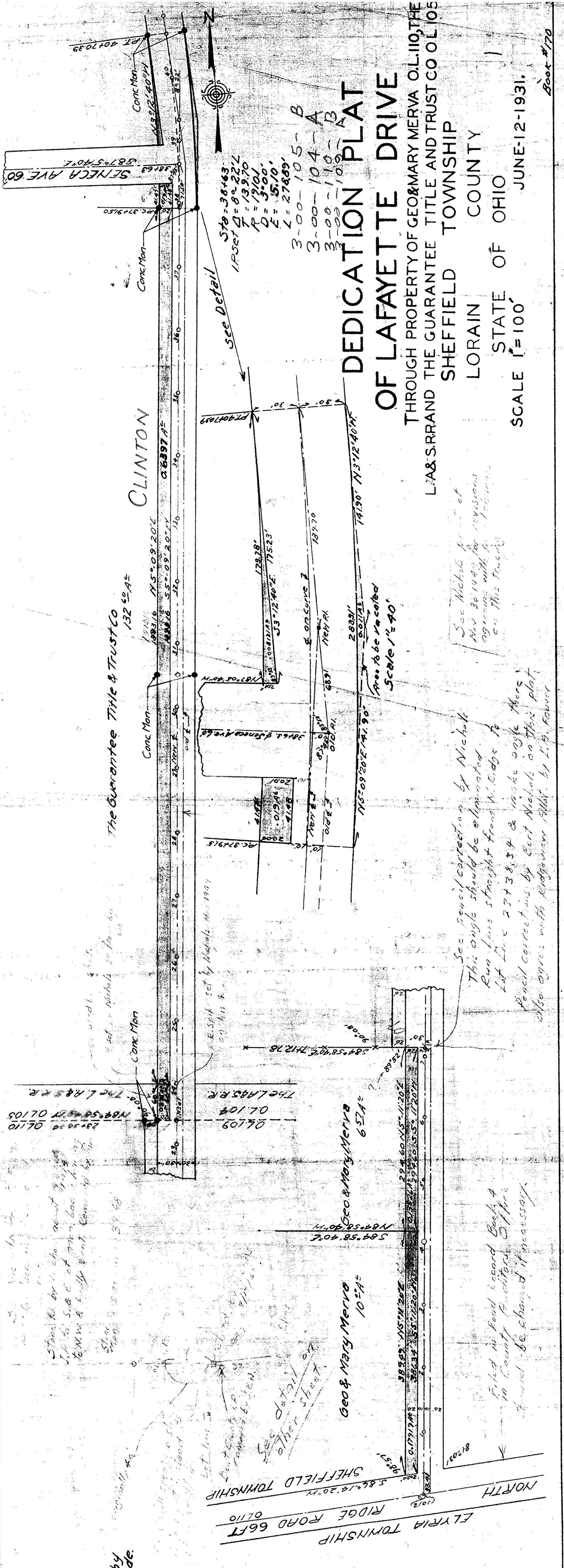
Geo. & Mary Merva
Wm. & Mary Merva

Who acknowledge the signing of the foregoing instrument to be their free act and deed.

Signed this 14th day of July 1931
County Surveyor

The within dedication is hereby approved and accepted.

Thomas P. Bell
C. D. Merson
George P. ...
Lorain County Commissioners.
Date, 1931



See pencil correction by Nichols
This angle should be eliminated
Run line straight from N. Edge to
Lot Line 27+38.34 & make angle there
Pencil corrections by Bert Nichols on this plat
also agree with Redgroom Plat by L. B. Fowler

See Nichols Plat of
Nov 20 1929 for revisions
agreeing with the Johnson
on this tract