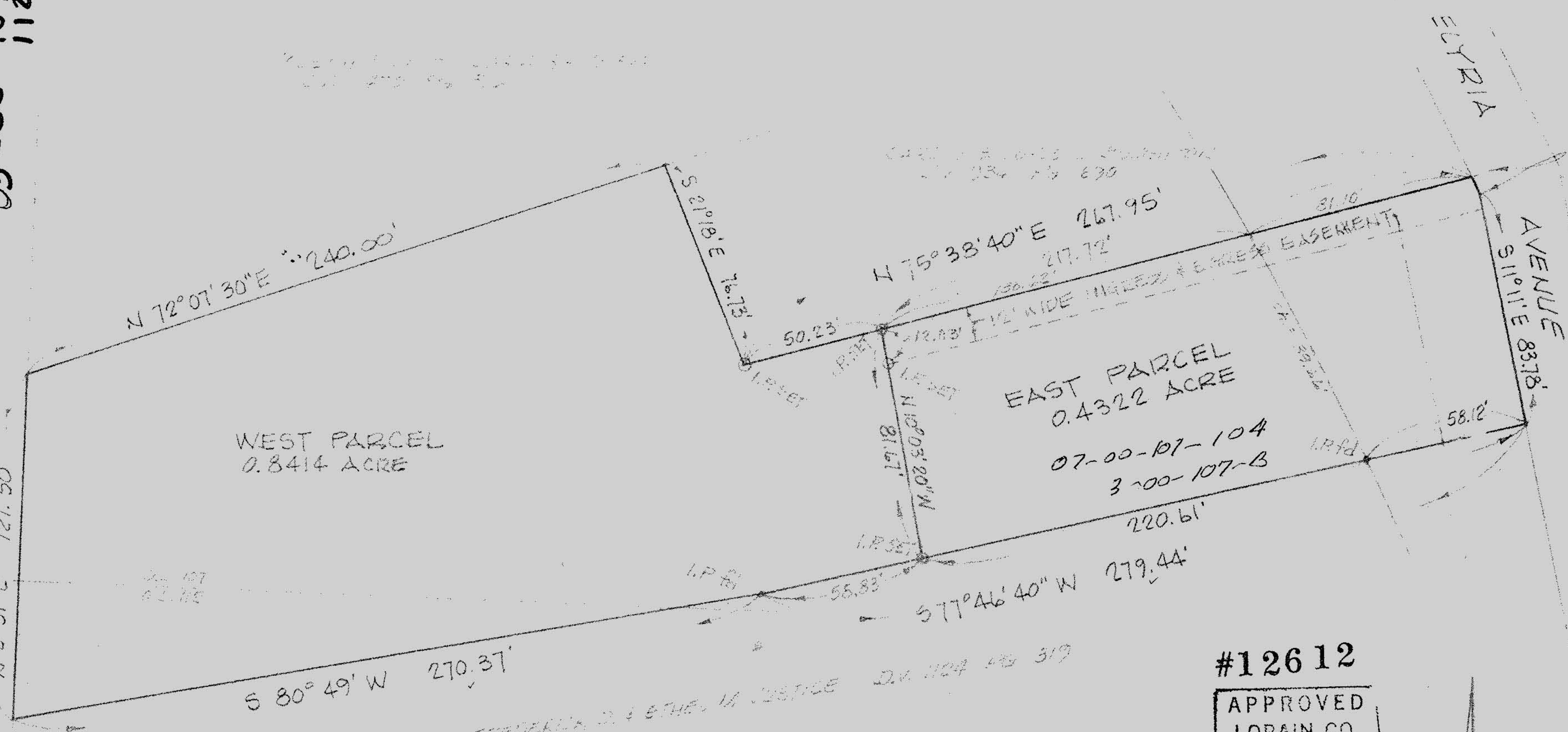


03-00-107-101
101
112-80

* 18356

3-00-107-B



S 26° 14' 30" E
6.13'

07-00-107-105
3-00-107-B

3-00-107-B

12612

03-00-107-104
112-105

WEST PARCEL
0.8414 ACRE

EAST PARCEL
0.4322 ACRE

07-00-107-104
3-00-107-B

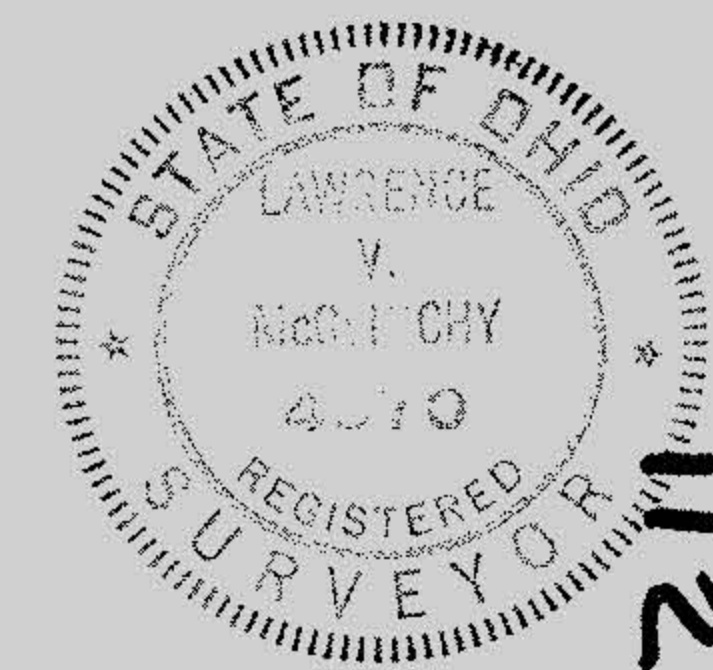
#12612

APPROVED
LORAIN CO.
MAP DEPT.
DATE 4-20-79
PAGE 3-00-107-B
BY <i>J. Colwell</i>
VOID
INTER

MAP of SURVEY and PROPOSED PARCEL SPLIT
 PREPARED FOR STEVE STETAK
 PARTS of ORIGINAL SHEFFIELD TOWNSHIP LOTS Nos. 107 & 112
 TOWNSHIP of SHEFFIELD, LORAIN COUNTY, OHIO

APPROVED BY THE LORAIN CITY PLANNING
 COMMISSION..... NO PLAT REQUIRED
Tom B. Richards
 SECRETARY LORAIN CITY PLANNING COMMISSION

SCALE: 1" = 40'



APPROVED
 AS TO DESCRIPTION ONLY
 Date *April 12, 1979*
 City of Lorain
 Per *Lowell A. Kneisel*
 Engineering Dept.

McGLINCHY and ASSOCIATES
 PROFESSIONAL ENGINEER & SURVEYORS
 ELYRIA OHIO
 DECEMBER, 1978 # 784629