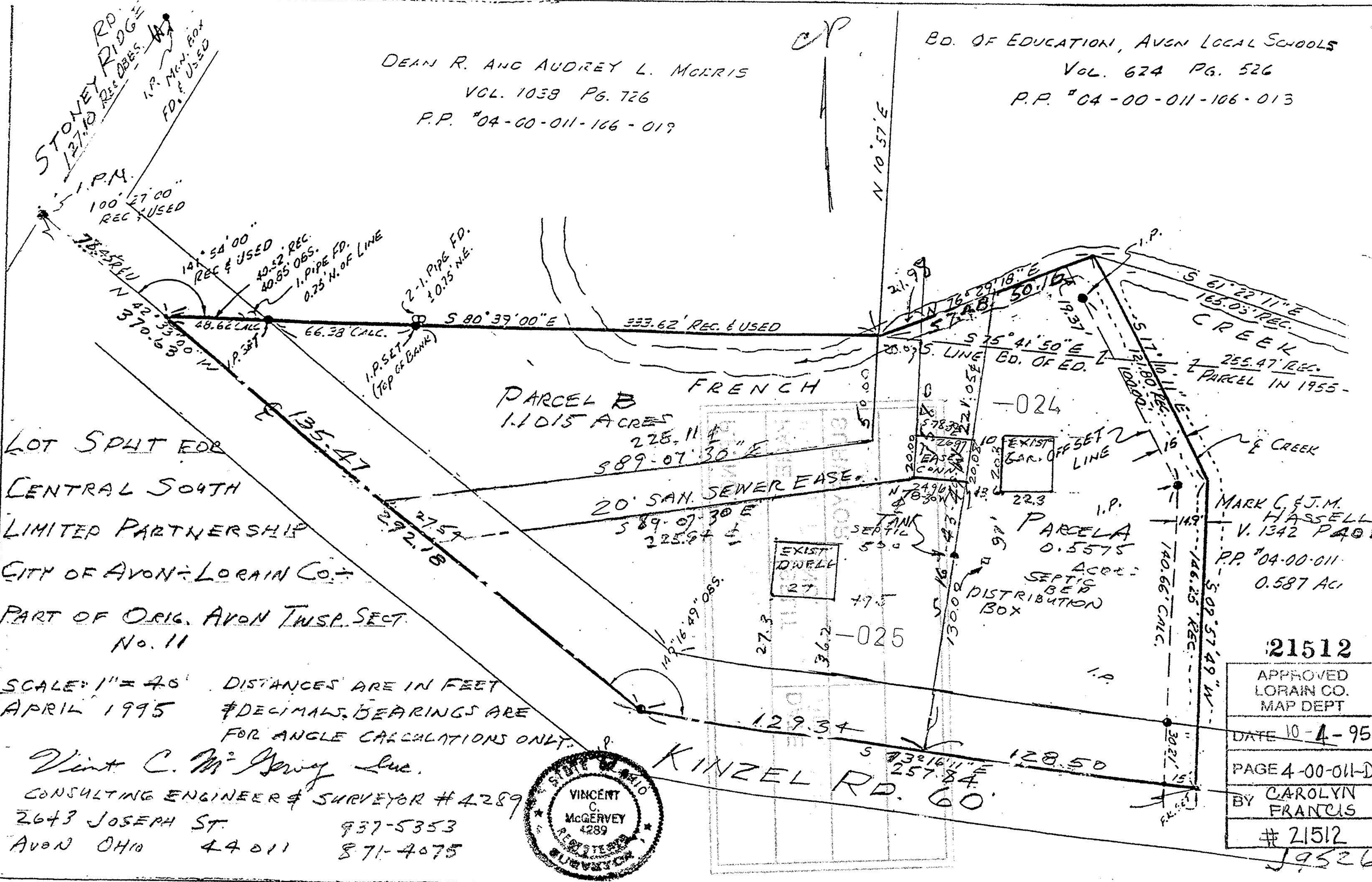


DEAN R. AND AUDREY L. McCRIS
 VOL. 1038 PG. 726
 P.P. #04-00-011-106-019

BD. OF EDUCATION, AVON LOCAL SCHOOLS
 VOL. 624 PG. 526
 P.P. #04-00-011-106-013



LOT SPLIT FOR
 CENTRAL SOUTH
 LIMITED PARTNERSHIP
 CITY OF AVON - LORAIN CO.
 PART OF ORIG. AVON TWP. SECT.
 No. 11

SCALE: 1" = 40' DISTANCES ARE IN FEET
 APRIL 1995 #DECIMALS. BEARINGS ARE
 FOR ANGLE CALCULATIONS ONLY.

Vincent C. McGervey Inc.
 CONSULTING ENGINEER & SURVEYOR #4289
 2643 JOSEPH ST. 937-5353
 AVON OHIO 44011 871-4075



21512
APPROVED LORAIN CO. MAP DEPT
DATE 10-4-95
PAGE 4-00-011-D
BY CAROLYN FRANCIS
21512 J9526