

S.W. CORNER
LOT No. 22

N 0°52'13" W
1428.07'

RADIUS = 6731.38
ARC LENGTH = 34.85
CHORD BEARING = S 1d 42'32" W
CHORD DISTANCE = 34.95'

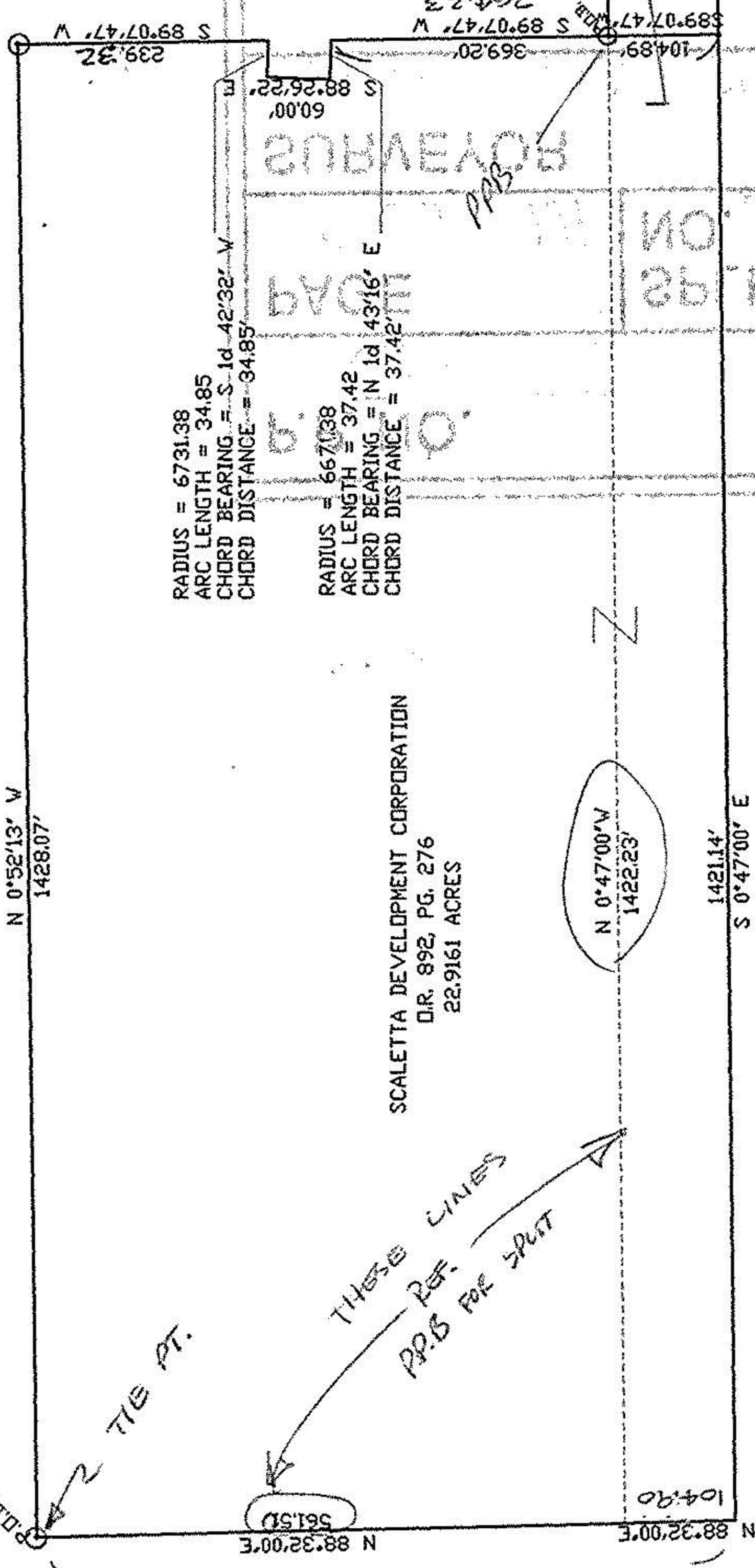
RADIUS = 6670.38
ARC LENGTH = 37.42
CHORD BEARING = N 1d 43'16" E
CHORD DISTANCE = 37.42'

SCALETTA DEVELOPMENT CORPORATION
D.R. 892, PG. 276
22.9161 ACRES

THESE LINES
REF.
P.P.B FOR SPOT

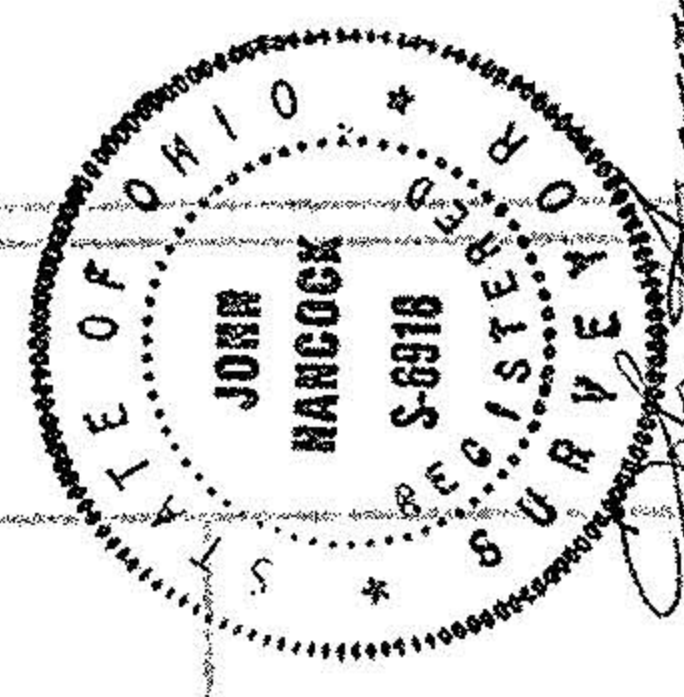
N 0°47'00" W
1422.23'

1421.14'
S 0°47'00" E



ALBERT J. AND RUTH L. GREENE
D.V. 501, PG. 110
P.V. 1365, PG. 399

PART OF ORIG. AVON TWP. LOT 22
CITY OF AVON - LORAIN CO - OHIO



1/2" IRON ROD SET
1/2" IRON PIPE FOUND

21054

APPROVED LORAIN CO. MAP DEPT
DATE 9-29-94
PAGE 4-00-02E
BY CAROLYN FRANCIS
#21054

John Hancock & Associates
415 COLUMBUS AVENUE SUITE 400
AVON, OHIO 44001
(419) 835-7888

SURVEY FOR SCALETTA DEVELOPMENT
DETROIT ROAD
AVON, OHIO

SCALE: 1"=200'
DRAWING NO. 75784
DATE: 5/18/84