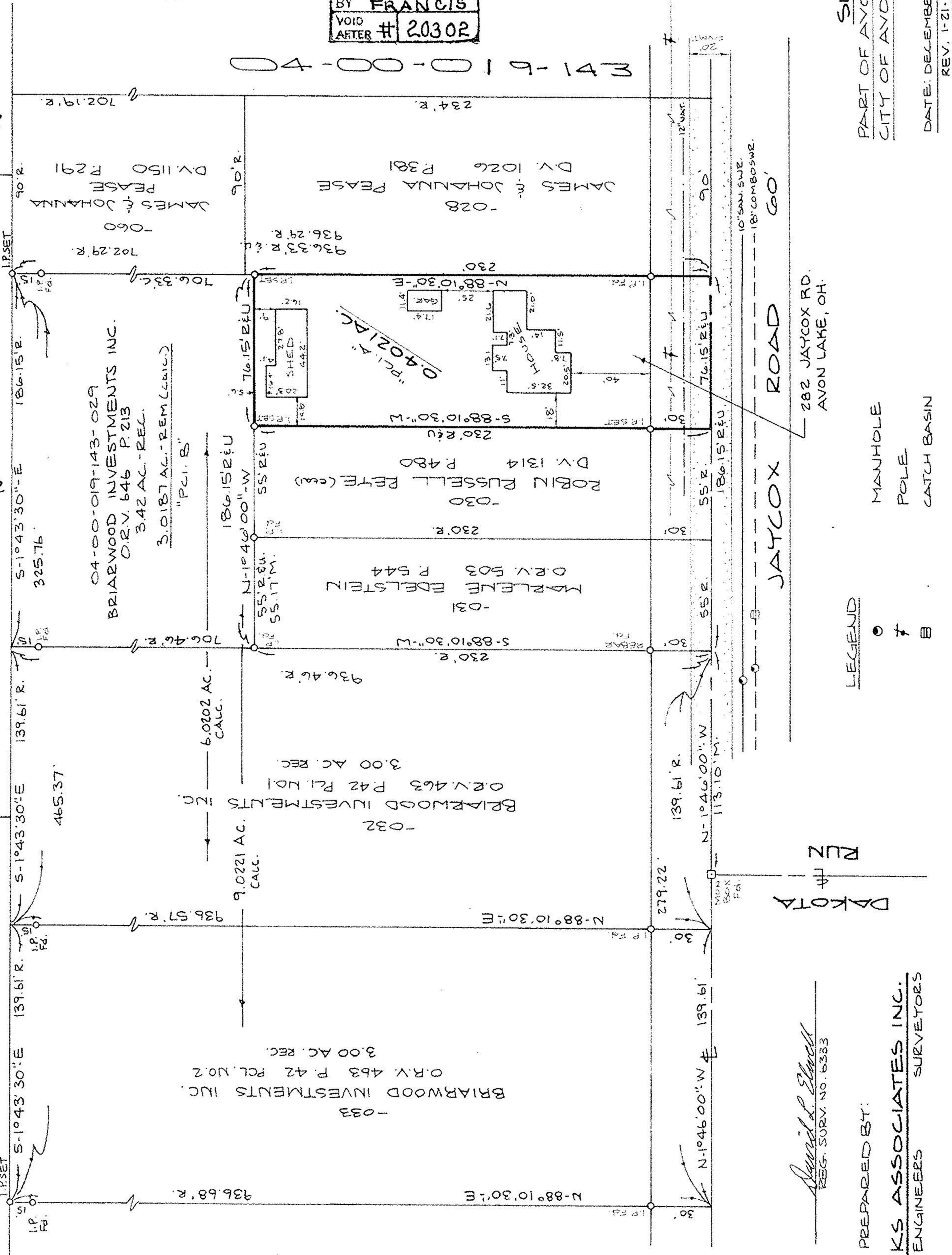


GREEN POINTE SUBDIVISION NO. 2
 P.V. 35 P. 69-71

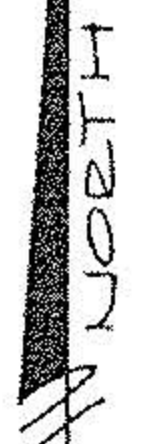
GREEN POINTE SUBDIVISION NO. 4
 P.V. 36 P. 64 & 65

26

24

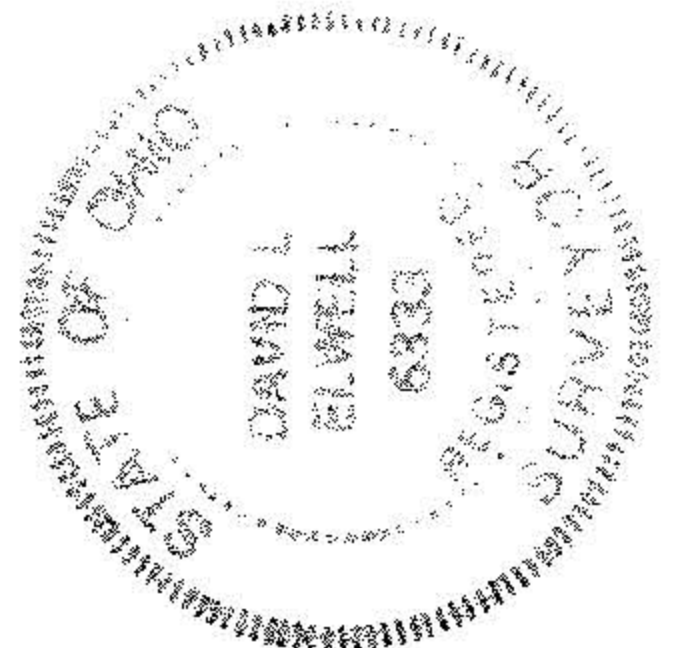


SCALE: 1" = 50'



20302
 APPROVED
 LORAIN CO.
 MAP DEPT.
 DATE 3-22-93
 PAGE 4-00-019
 BY CAROLYN FRANCIS
 VOID AFTER # 20302

04-00-019-143



SURVEY MAP
 PART OF AVON TOWNSHIP SEC. NO. 19
 CITY OF AVON LAKE COUNTY OF LORAIN
 STATE OF OHIO
 DATE: DECEMBER 28, 1992
 REV. 1-21-93 REV. 2-10-93
 REV. 1-28-93 REV. 2-2-93
 SCALE: 1" = 50'

LEGEND
 ● MANHOLE
 † POLE
 □ CATCH BASIN

PREPARED BY:
David L. Elwell
 REG. SURV. NO. 6333

K.S. ASSOCIATES INC.
 ENGINEERS SURVEYORS