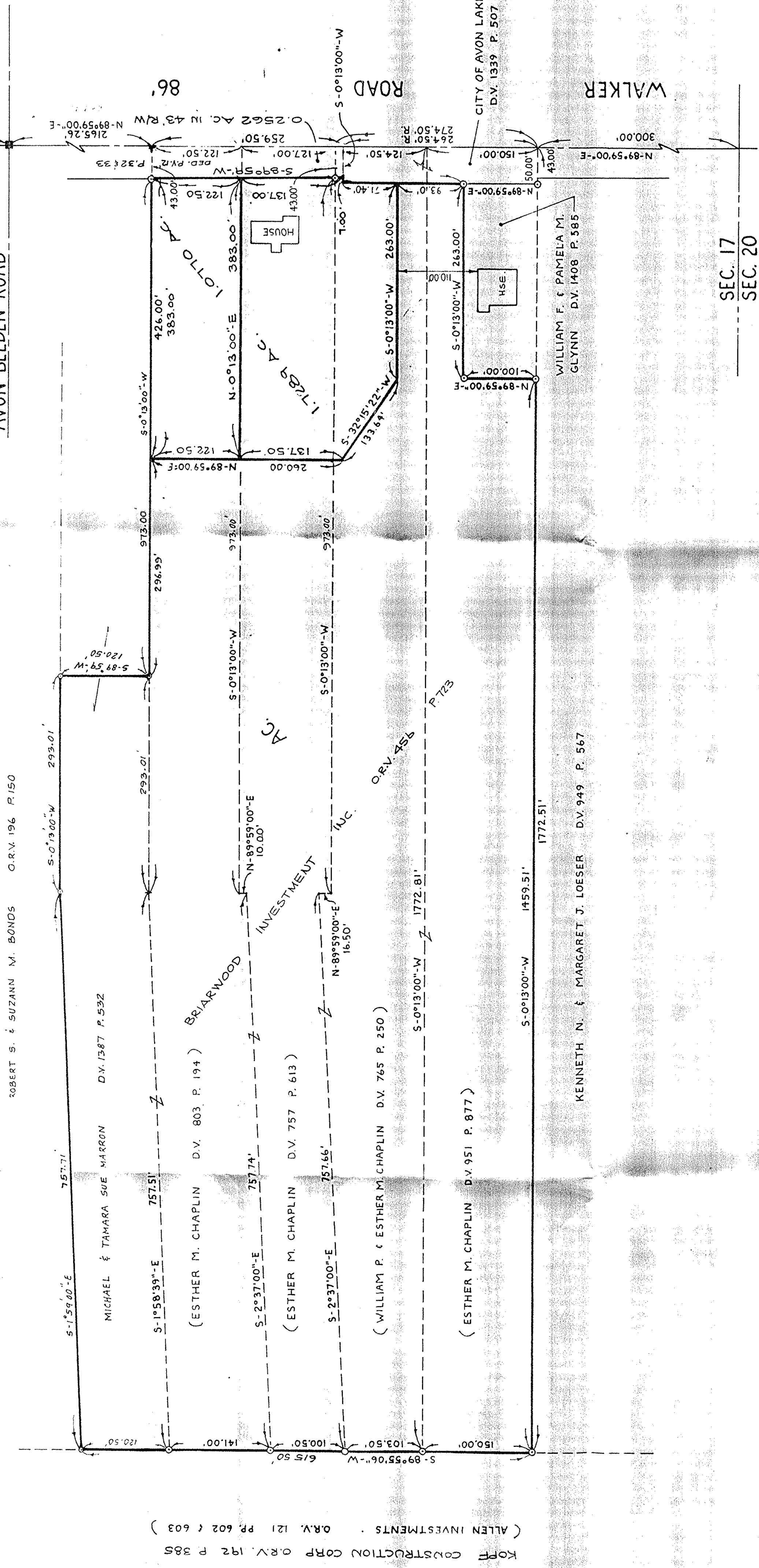


AVON-BELDEN ROAD

MON. BOX FD.



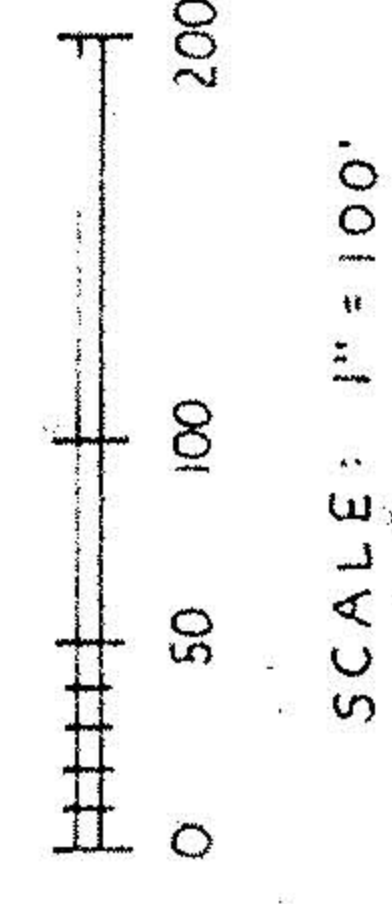
KOPF CONSTRUCTION CORP. O.R.V. 192 P. 385
 ALLEN INVESTMENTS O.R.V. 121 PP. 602 & 603

BOUNDARY SURVEY

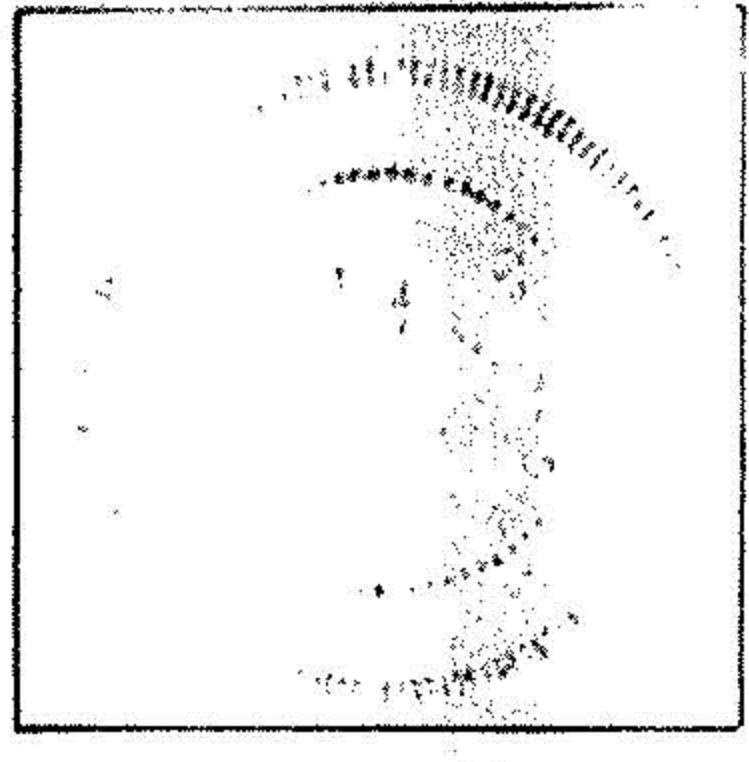
PART OF
 AVON TOWNSHIP SECTION 17
 CITY OF AVON LAKE COUNTY OF LORAIN
 STATE OF OHIO

PREPARED BY:
K.S. ASSOCIATES INC.
 ENGINEERS SURVEYORS

NOV 13 1991
 FILE COPY



IRON PIPE



David L. Elwell
 DAVID L. ELWELL REG. SURVEYOR # 6333

7-5-89
 REV. 7-17-89
 REV. 8-2-89
 REV. 8-1-89

REV. 8-26-89 REV. 11-12-91