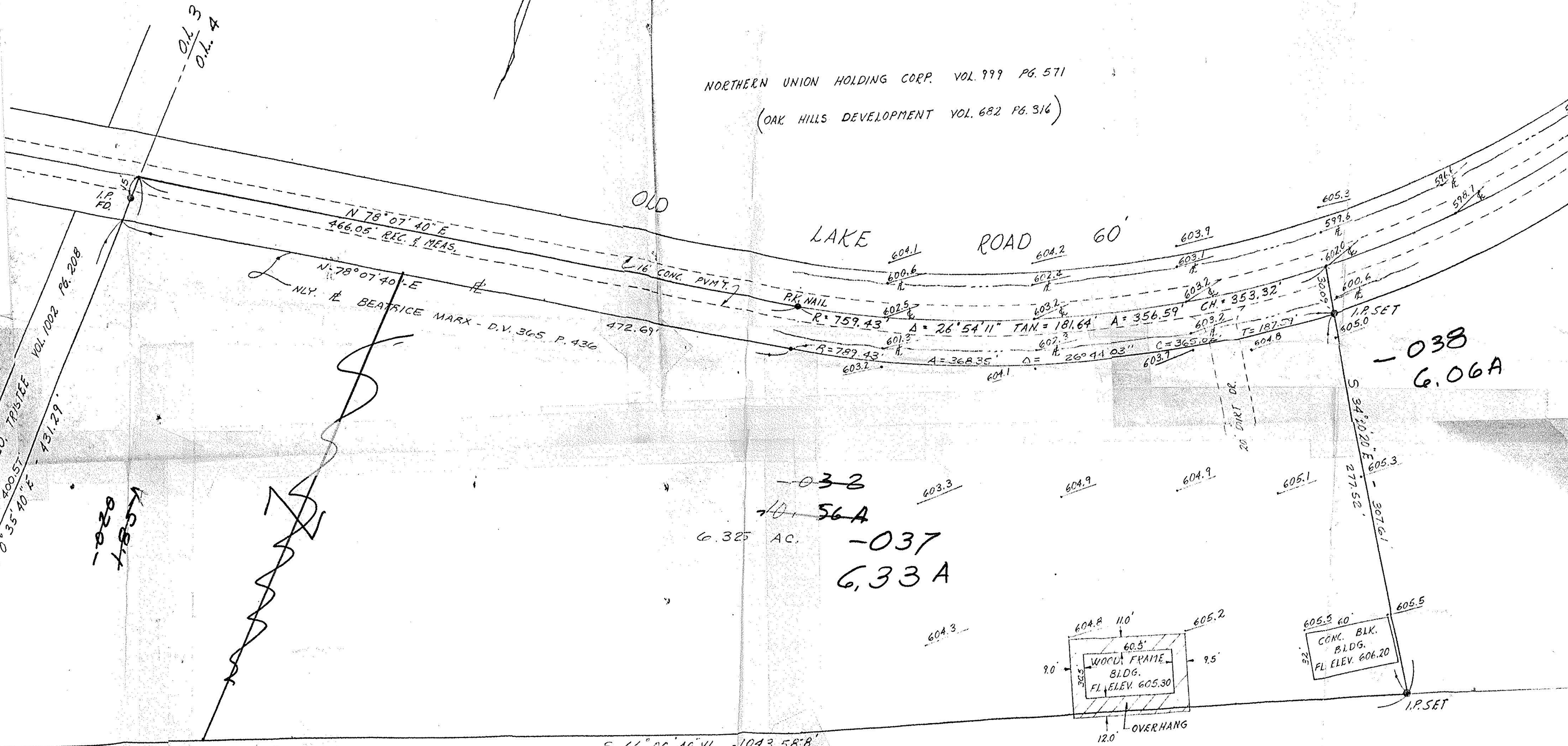


NORTHERN UNION HOLDING CORP. VOL. 999 PG. 571
(OAK HILLS DEVELOPMENT VOL. 682 PG. 316)



020
185

~~032~~
~~56A~~
6.325 AC.
-037
6.33A

-038
6.06A

I.P. SET
O.L. 3 CLEVELAND TRUST CO. TRUSTEE VOL. 1002 PG. 208
O.L. 4
N 0° 35' 40" E 400.57'
N 78° 07' 40" E 466.05' REC. & MEAS.
N 78° 07' 40" E 472.69'
N 78° 07' 40" E 431.29'

S 66° 00' 40" W 1043.58' 8"

THERESA SIMON VOL. 101. 393 PG. 214

by Schmidt & Associates

Drawn by KPC

Scale 1"=50'

Date 3-4-76