

02-03-002-102-004 ?

2-03-002-A

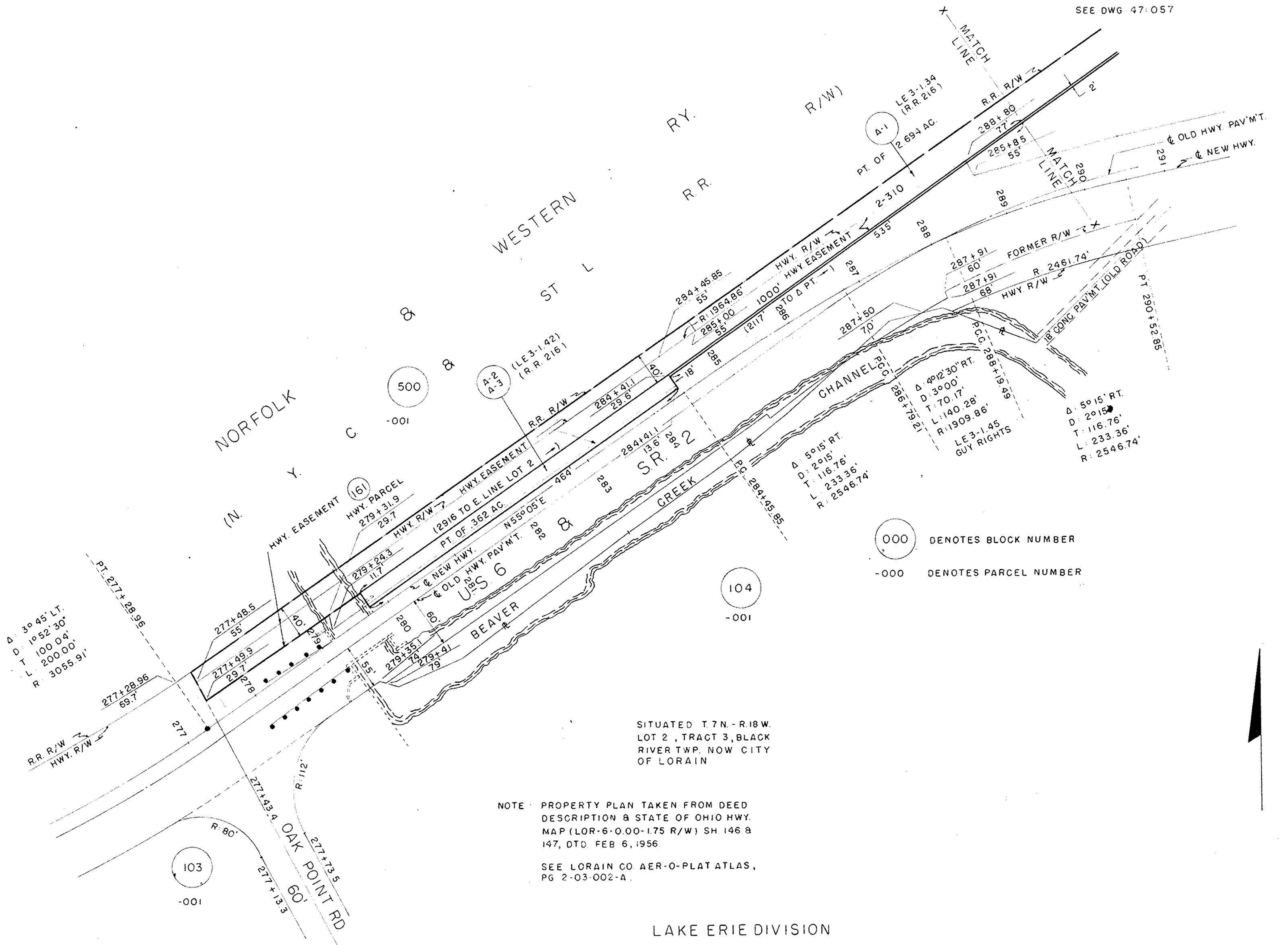
HWY EASEMENT

02-03-002-104-

JAN. 16, 1964 RB (REV.)  
 MAY 26, 1965 M.J. (REV.)  
 DEC. 9, 1965 RB (REV.)  
 JAN. 12, 1972 RB (REV.)  
 NOV. 3, 1975 RB (REV.)  
 FEB. 9, 1978 RB (REV.)  
 CK SDB

FILE	GRANTOR	GRANTEE	TYPE	DATE	VOL.	PG.
A-1	H. KOLBE	THE S. & INTR. E. RY. CO.	APPROP.	FEB. 27, 1901	2	142
A-2	H. & K. KOLBE JR.	THE L. S. E. RY. CO.	WTY.	MAY 17, 1904	93	271
A-3	OHIO EDISON CO.	STATE OF OHIO	EASE.	JAN. 27, 1956	659	230

\* APPROP. RECORD, PROBATE COURT  
 \*\* HWY. EASEMENT



EDGEWATER-AXTEL  
 69 KV TRANS. R/W PROPERTY  
 CITY OF LORAIN  
 LORAIN CO.  
 OHIO EDISON CO.

LAKE ERIE DIVISION

47:058