

PLAT OF
PART OF BLACK RIVER TOWNSHIP
ORIGINAL LOT 1 - TR. 3
CITY OF LORAIN COUNTY OF LORAIN STATE OF OHIO

SCALE: 1" = 100'
FEBRUARY 1968
REVISED: 4-25-68

BY
RAY E. HOLLIS
REGISTERED SURVEYOR

TRI-STATE DRIVE-IN THEATERS, INC.

S-1°10'10"E

1420.33'

N 1°48'00"W

532.25'

374.9'

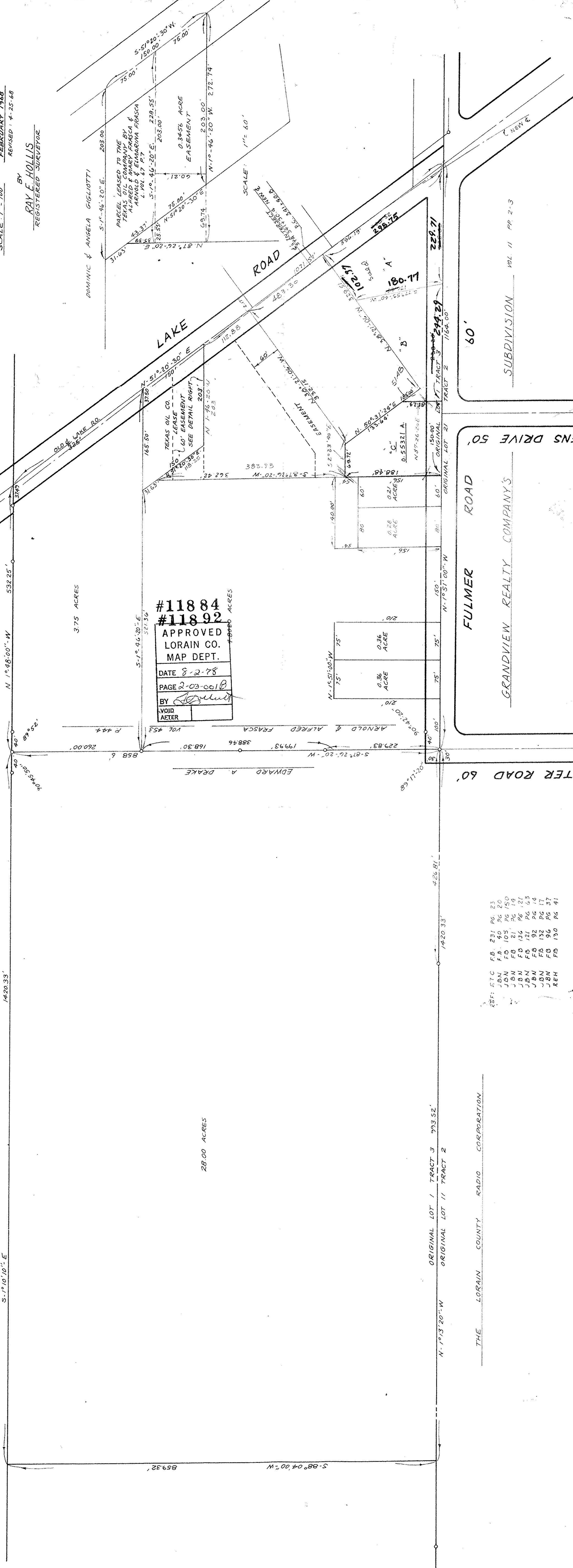
374.9'

374.9'

3.75 ACRES

#11884
#11892
APPROVED
LORAIN CO.
MAP DEPT.
DATE 8-2-78
PAGE 2-03-001 B
BY [Signature]
VOID AFTER

28.00 ACRES



- REF: ETC
- FB, 231 Pg. 23
 - FB, 40 Pg. 20
 - JBN, 105, Pg. 150
 - JBN, 21, Pg. 19
 - JBN, 134, Pg. 21
 - JBN, 171, Pg. 43
 - JBN, 92, Pg. 14
 - JBN, 132, Pg. 11
 - JBN, 136, Pg. 37
 - REH, 130, Pg. 41



THE LORAIN COUNTY RADIO CORPORATION

ORIGINAL LOT 1 TRACT 3 993.52'
ORIGINAL LOT 11 TRACT 2

1420.33'

150.00'

150.00'

228.71'

228.71'

228.71'

FULMER ROAD

GRANDVIEW REALTY COMPANY'S

STEVENS DRIVE 50'

SUBDIVISION VOL. 11 PP. 2-3

REFERENCES: D-23 P. 30
FF-4
TAX MAP 2-03-001 B
JY-24 1-C-14

Enviro Tech Consultants Inc.
ENGINEERS SURVEYORS & LAND PLANNERS
1127 WEST 14th STREET
LORAIN, OHIO 44052