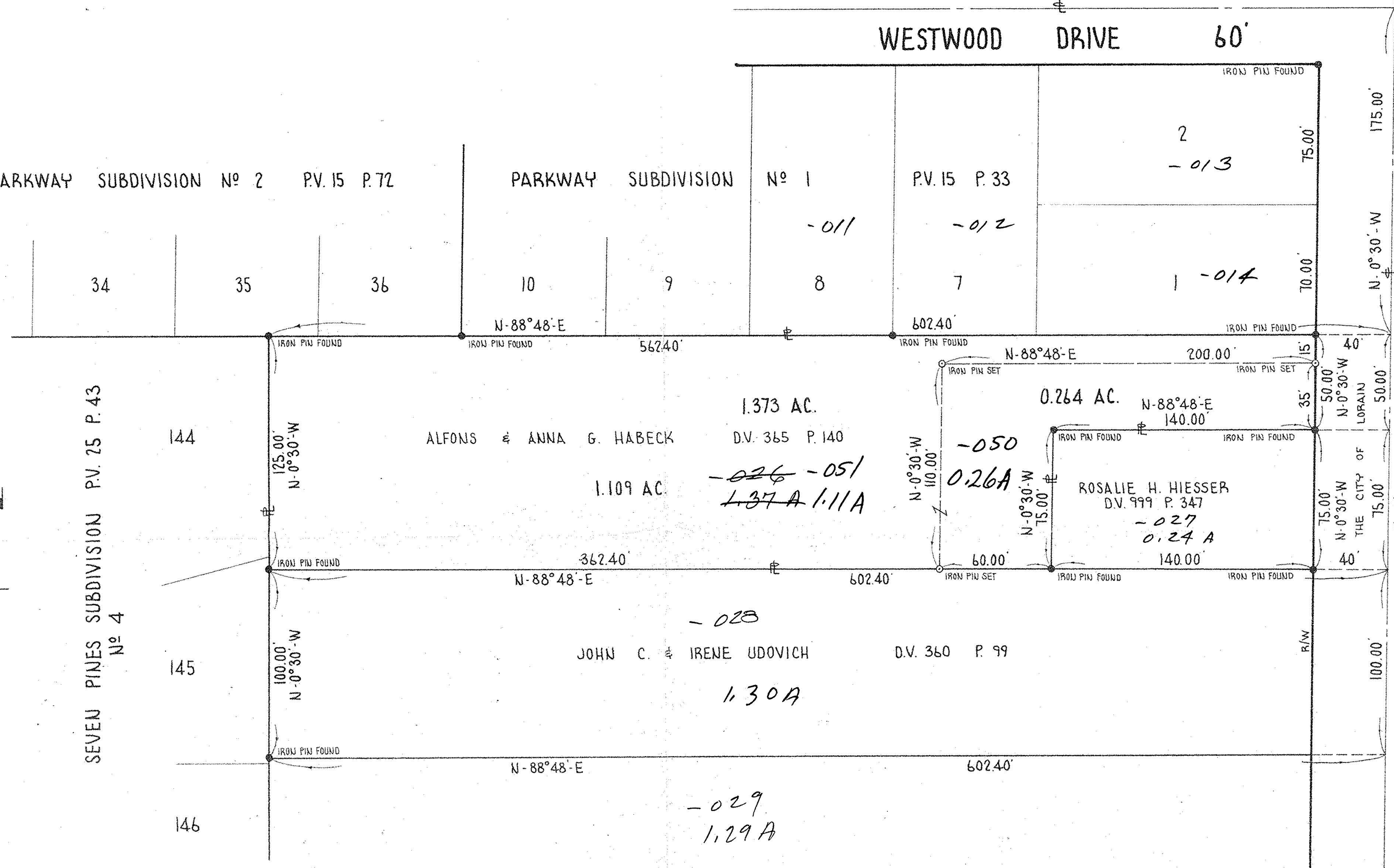


PARKWAY SUBDIVISION No 2 P.V. 15 P. 72

PARKWAY SUBDIVISION No 1 P.V. 15 P. 33

SEVEN PINES SUBDIVISION P.V. 25 P. 43
No 4



BOUNDARY SURVEY OF PART OF
BLACK RIVER TOWNSHIP ORIGINAL LOT 5 TRACT 2
CITY OF LORAIN COUNTY OF LORAIN STATE OF OHIO

SCALE: 1" = 40' JAN. 15, 1979

PREPARED BY
KLEINOEDER-SCHMIDT & ASSOCIATES
 CONSULTING ENGINEERS & SURVEYORS
 ELYRIA OHIO

APPROVED BY THE LORAIN CITY PLANNING COMMISSION
Amy B. Koelgers
 SECRETARY LORAIN CITY PLANNING COMMISSION

APPROVED
 as to legal description
Lowell Krueger, Engr. Dept.

THIS IS TO CERTIFY THAT I HAVE SURVEYED
 THE 1.373 ACRE PARCEL AS SHOWN HEREON
 AND THAT THIS MAP IS A CORRECT REPRESENTATION THEREOF.

Robert E. Kleinoeder
 REGISTERED SURVEYOR

JOB NO.
 79-04

