

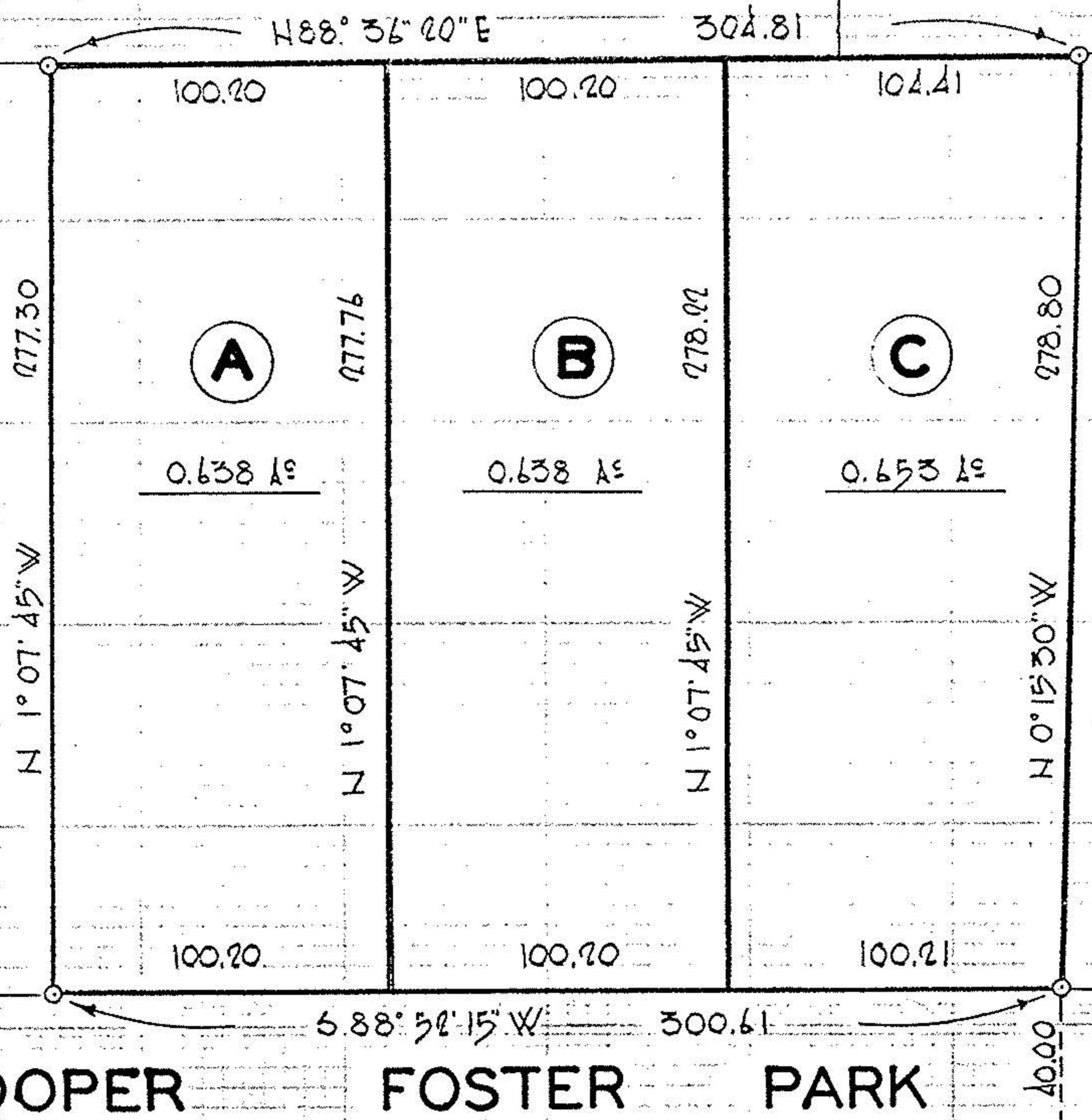
02-02-005-114

HAROLD A. WEST



CONVENIENT FOOD MARKTS

ALESSIO
0.636 AS



TOP LINE USED CUES
APPROVED BY THE LORAIN CITY PLANNING
COMMISSION..... NO PLAT REQUIRED

B. R. Hura
SECRETARY LORAIN CITY PLANNING COMMISSION



OBERLIN AVENUE

COOPER FOSTER PARK ROAD

PARCEL MAP OF SPLIT OF PART
OF BLOCK "C" OF THE ASHWOOD
ACRES SUBDIVISION- N# 2
PLAT VOL. 29 PG. 10

APPROVED
Lowell A. Kneisel, Eng. Dept.

PREPARED BY: NORMAN R. HURA & ASSOC.
DEVELOPER: THE SHAFFER COMPANY
MAY 15, 1978

SCALE 1"=60'

#11748

APPROVED LORAIN CO. MAP DEPT.
DATE 6-14-78
PAGE 2-02-005-B
BY <i>T. McNeil</i>
VOID AFTER