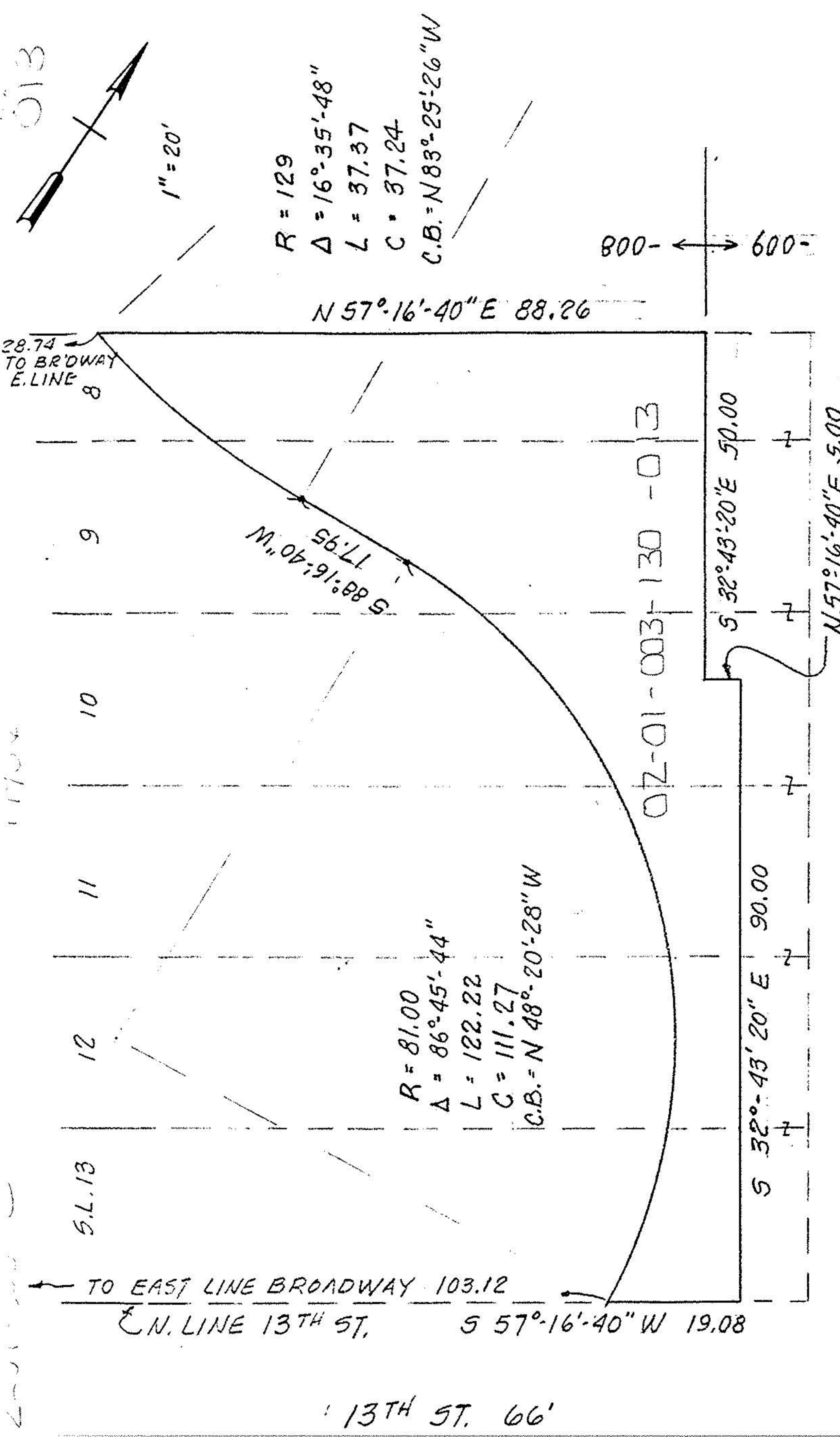


013



PREPARED FROM DESCRIPTION
 FURNISHED & HIGHWAY PLAN

THIS IS NOT A PLAT OF SURVEY:
 FOR: ATTORNEY DAN COOK

K. E. MCCARTNEY & ASSOCIATES
 APR. 27, 1988 #881988

CB-MISC.

PART of
 SUBLOTS 8 thru 13 in BLOCK 22 of
 SELAH CHAMBERLAIN TRUSTEES SUBDIVISION
 PLAT VOL. 2 PAGE 11
 PART of ORIG. BLACK RIVER TWP. LOT 3-TRACT 1
 NOW in CITY of LORAIN , OHIO
 PART of P.P. No. 02-01-003-130-008
 TAX MAP PAGE 02-01-003-C

13TH ST. 66'