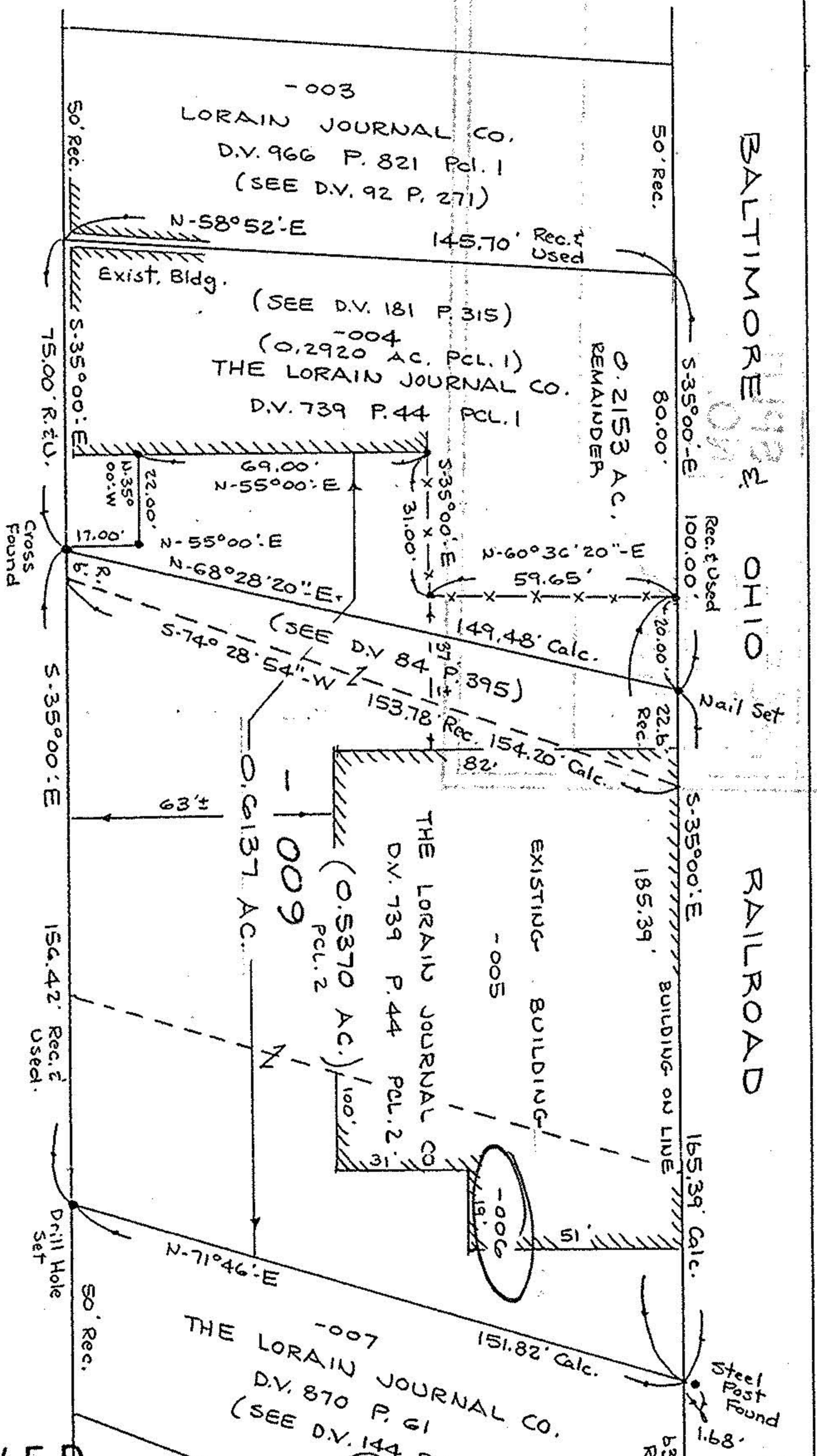


2-01-003-F

#17540

02-01-003-150-009

-006



BALTIMORE OHIO

RAILROAD

ELYPRIA AVENUE

S-35°00'E (Assumed)

#17540

APPROVED

AS TO DESCRIPTION ONLY

Date 7-9-87
 City of Lorain
 Per Bruce H. Kneissel
 Engineering Dept.

APPROVED BY THE LORAIN CITY PLANNING COMMISSION
Sally Campbell
 SECRETARY LORAIN CITY PLANNING COMMISSION

SCALE: 1" = 40'
 JUNE 1987
 REVISED 6-22-87

NORTH

BEARINGS SHOWN ARE ASSUMED AND FOR THE PURPOSE OF DESCRIBING ANGLES ONLY.

APPROVED
LORAIN CO.
MAP DEPT.
DATE <u>7-13-87</u>
BY <u>C. F. RANDEL</u>
VOID AFTER <u>17540</u>

BOUNDARY SURVEY
 OF PART OF
 BLACK RIVER TOWNSHIP
 ORIGINAL LOT 3 TRACT 1
 CITY OF LORAIN COUNTY OF LORAIN STATE OF OHIO

PREPARED BY
 K.S. ASSOCIATES INC.
 CONSULTING ENGINEERS & SURV.

REV. 7-7-87

87-159