

ALTERED PLAT OF  
**THE LORAIN STONE COMPANY'S**

2<sup>ND</sup> SUBDIVISION OF  
A PART OF LOT No 3 TRACT No 1 BLACK RIVER TWP.  
LORAIN CO., OHIO.

**THE LORAIN REALTY CO. INC.** AND OTHERS.

T. L. GIBSON, SURVEYOR

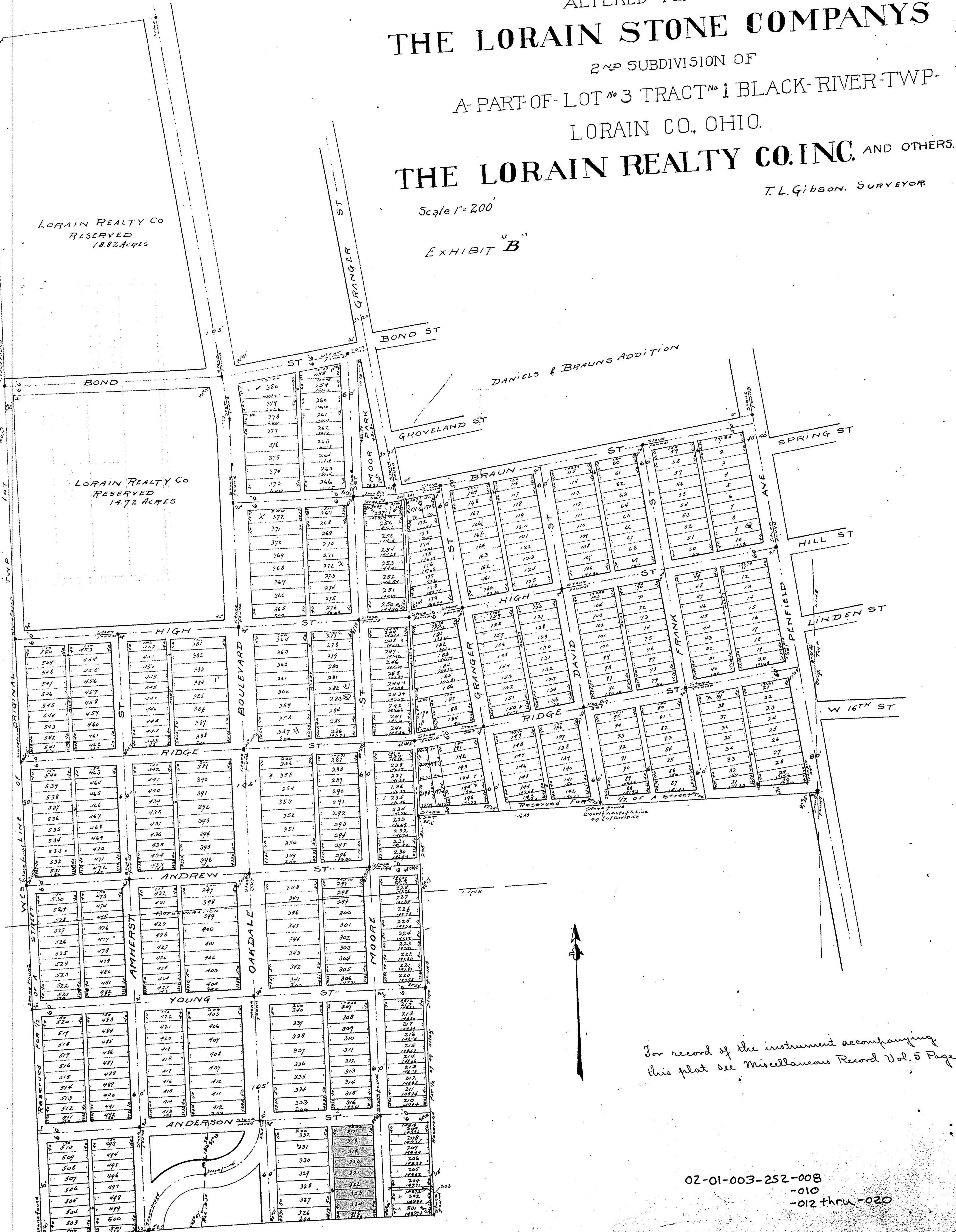
Scale 1" = 200'

EXHIBIT "B"

LORAIN REALTY CO  
RESERVED  
18.82 ACRES

LORAIN REALTY CO  
RESERVED  
14.72 ACRES

DANIELS & BRAUNS ADDITION



For record of the instrument accompanying  
this plat see Miscellaneous Record Vol. 5 Page 3

02-01-003-252-008  
-010  
-012 thru -020