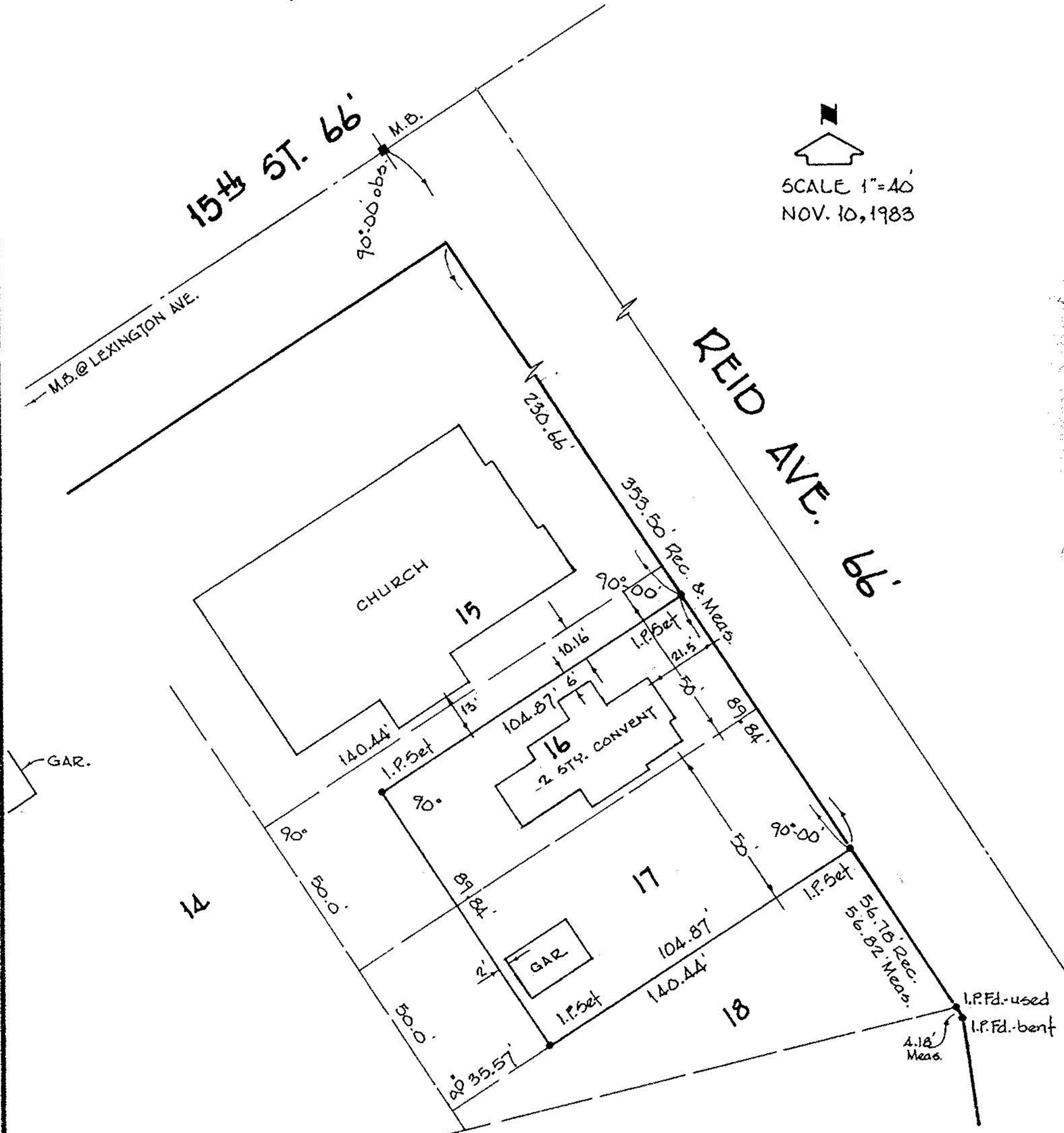


SCALE 1"=40'
NOV. 10, 1983



SURVEY FOR
DIOCESE OF CLEVELAND
ST. JOSEPH - LORAIN

PART OF S/L's 16 & 17 of S. CHAMBERLAIN RESUBN OF BLOCK 33
 PLAT VOL. 3 PG 38 O.L. 3 BLACK RIVER TWP. - LORAIN CITY - OHIO

Job No. 83-1242
 10.17.1984

02-01-003

LAUNDON • SIMON • CAHL & ASSOC.
 ENGINEERS SURVEYORS