

SURVEY MAP

SUBLOT NOS. 7 AND 8 AND
PART OF VACATED DEER RUN DRIVE

IN

HIDDEN CREEK SUBDIVISION No. 1

P.V. 48 P. 12 & 13

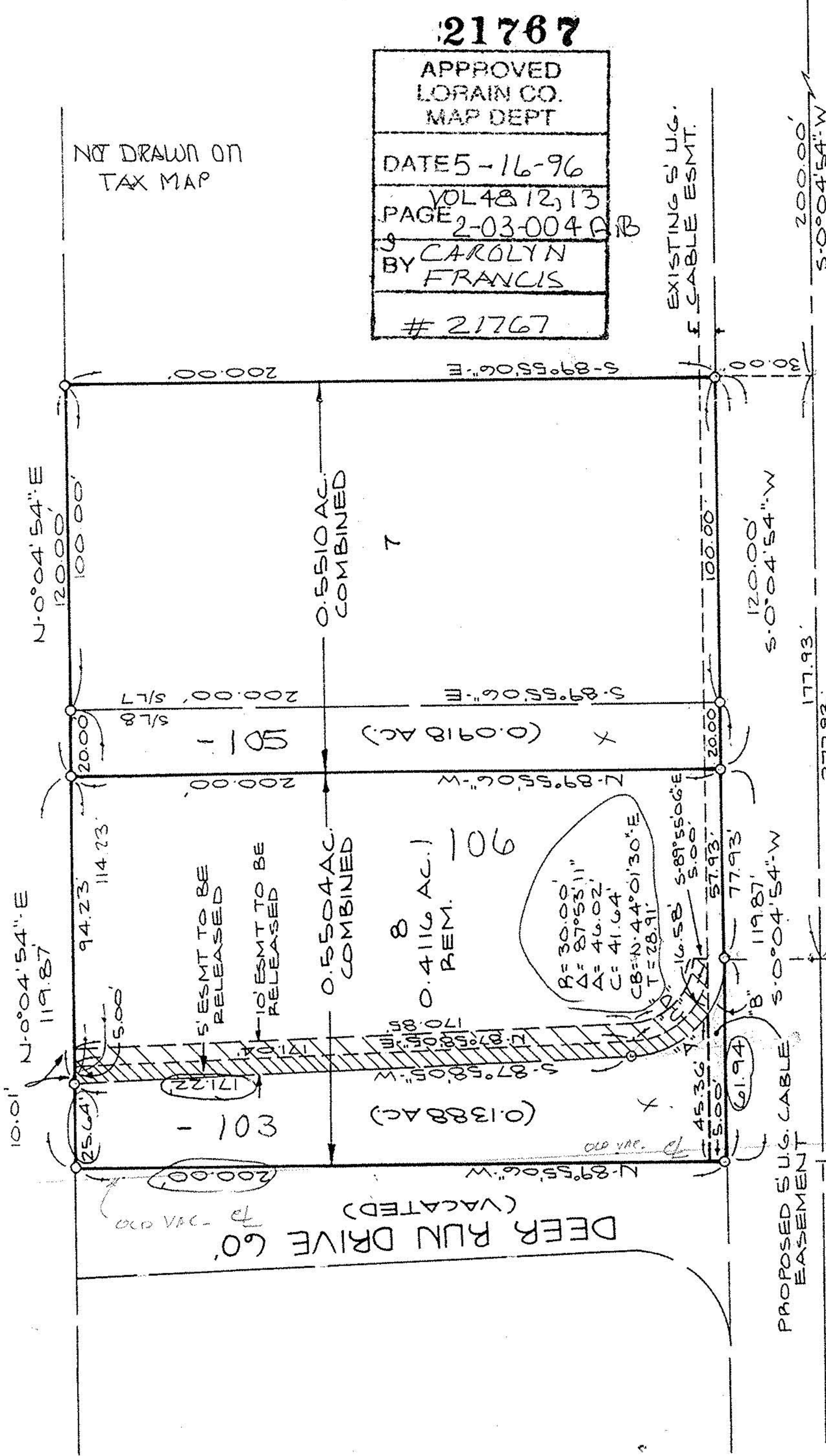
CITY OF LORAIN COUNTY OF LORAIN

STATE OF OHIO

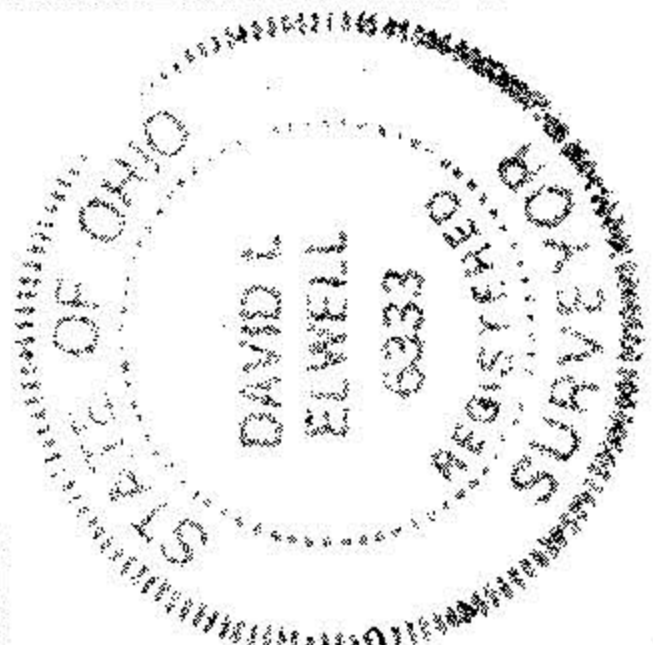
10-05-95

LEGEND

- MONUMENT FOUND
- IRON PIN FOUND
- 5/8" REBAR WITH CAP SET



21767
APPROVED
LORAIN CO.
MAP DEPT
DATE 5-16-96
VOL 48 P. 12, 13
PAGE 2-03-0040 B
BY CAROLYN
FRANCIS



APPROVED
AS TO DESCRIPTION ONLY

Date 4/10/96
Per Kimberly Hoskins
City of Lorain Engineer-in-Chief

David L. Elwell
REG. SURVEYOR NO. 6333



NORTH

APPROVED BY THE LORAIN CITY PLANNING
COMMISSION... NO PLAT REQUIRED
4-11-96 William E. Davis
SECRETARY LORAIN CITY PLANNING COMMISSION

"D"
P = 20.00'
Δ = 87°53'11"
A = 30.68'
C = 27.76'
CB = N-44°01'30"E

"C"
P = 25.00'
Δ = 87°53'11"
A = 38.35'
C = 34.70'
CB = N-44°01'30"E

"B"
P = 30.00'
Δ = 33°33'27"
A = 17.57'
C = 17.32'
CB = N-16°51'37"E

"A"
P = 30.00'
Δ = 54°19'44"
A = 28.45'
C = 27.39'
CB = S-60°48'12"W

PREPARED BY:

KS ASSOCIATES INC.
ENGINEERS SURVEYORS
REVISED 10-25-95