

SURVEY MAP

OF PART OF
"BLOCK B"
IN
THE OAKS SUBDIVISION NO. 3
PART OF BLACK RIVER TOWNSHIP LOT NO. 7 TRACT NO. 3
CITY OF LORAIN COUNTY OF LORAIN STATE OF OHIO

MAY 15, 1997
REVISED: OCTOBER 28, 1997

○ 3/8" CAPPED REBAR SET

Δ = 10°29'35"
R = 1570.00'
T = 144.17'
A = 287.53'
C = 287.13'
S 78°29'37"E

Δ = 16°27'34"
R = 1000.00'
T = 144.63'
A = 287.27'
C = 286.28'
S 81°28'36"E

Δ = 03°53'38"
R = 1030.00'
T = 35.01'
A = 70.00'
C = 69.99'
S 75°11'38" E

Δ = 08°23'37"
R = 1030.00'
T = 75.58'
L = 150.89'
C = 150.76'
S 81°20'16" E

Δ = 04°10'19"
R = 1030.00'
T = 37.52'
A = 75.00'
C = 74.98'
S 87°37'14"E

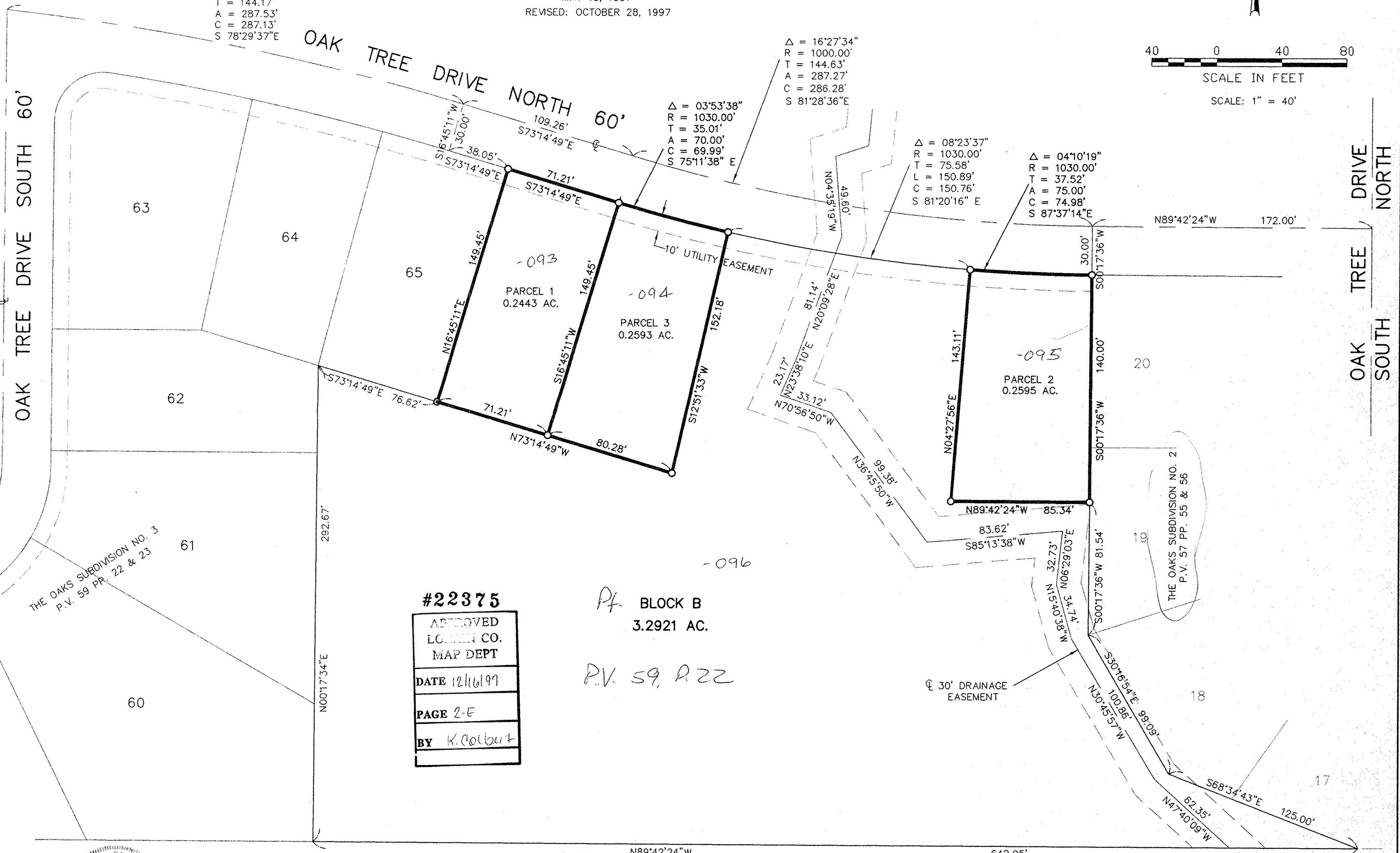


SCALE IN FEET

SCALE: 1" = 40'



PV 57/23



#22375
APPROVED
LORAIN CO.
MAP DEPT
DATE 12/16/97
PAGE 2-E
BY K. Colburn

Pf BLOCK B
3.2921 AC.
P.V. 59, P. 22



DAVID L. ELWELL
REGISTERED SURVEYOR NO. 6333

VICTOR J. NARDINI
O.R.V. 1033 P. 671

APPROVED
AS TO DESCRIPTION ONLY
Date 11/14/97
Per Kimberley Hobson
Engineering Dept.

APPROVED BY THE LORAIN CITY PLANNING
COMMISSION..... NO PLAT REQUIRED
William E. Robin... 11-17-97
SECRETARY LORAIN CITY PLANNING COMMISSION

PREPARED BY:
KS ASSOCIATES, INC.
ENGINEERS SURVEYORS