

ALTERED PLAT OF
THE LORAIN STONE COMPANY'S

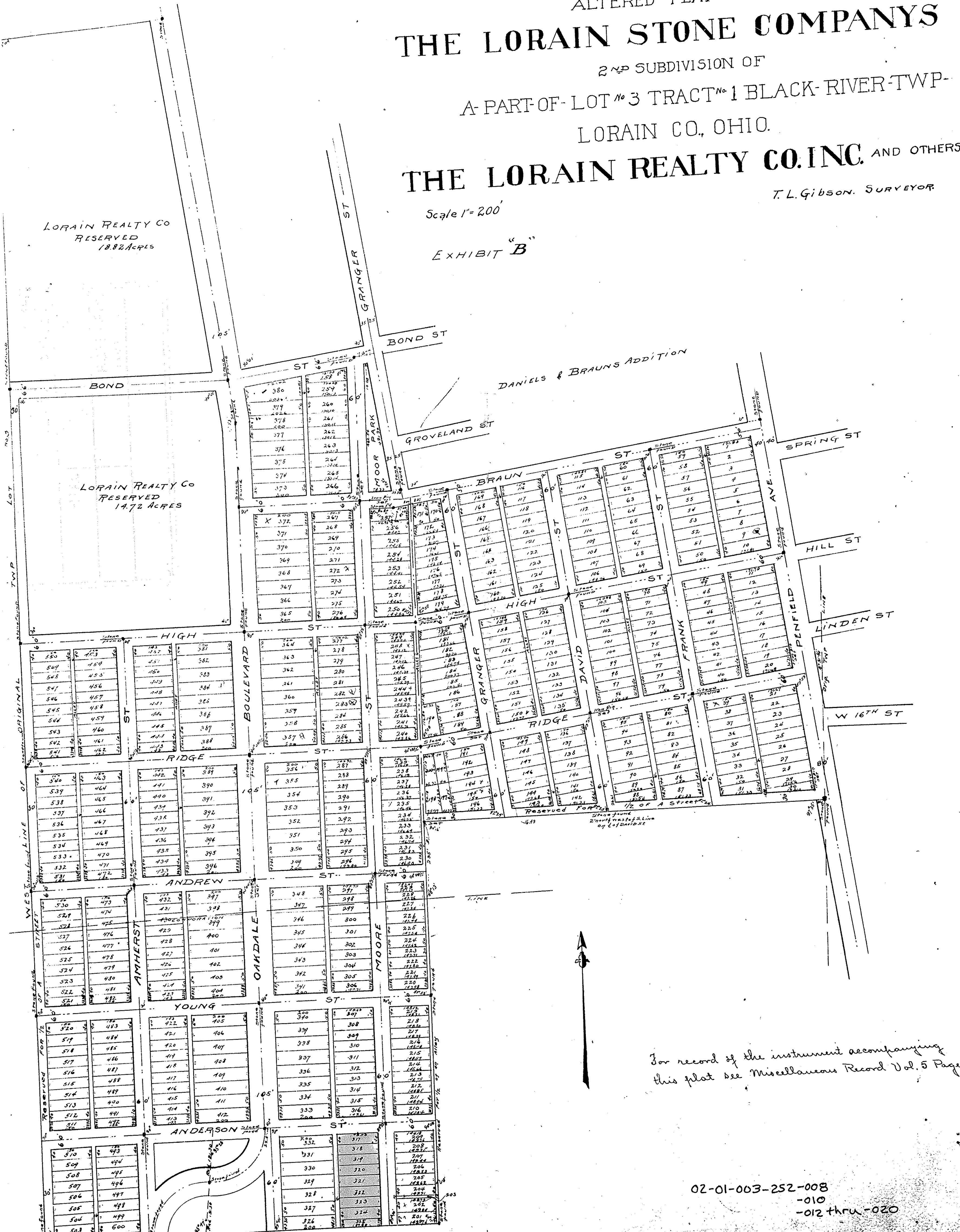
2ND SUBDIVISION OF
A PART OF LOT No 3 TRACT No 1 BLACK RIVER TWP.
LORAIN CO., OHIO.

THE LORAIN REALTY CO. INC. AND OTHERS.

T. L. Gibson, SURVEYOR

Scale 1" = 200'

EXHIBIT "B"



LORAIN REALTY CO
RESERVED
18.82 ACRES

LORAIN REALTY CO
RESERVED
14.72 ACRES

DANIELS & BRAUNS ADDITION

For record of the instrument accompanying
this plat see Miscellaneous Record Vol. 5 Page 31

02-01-003-252-008
-010
-012 thru -020