

BOUNDARY SURVEY

PART OF SUBLOT NO. 9 IN WHISPERING PINES SUBDIVISION

P.V. 35 P.P. 74 & 75

CITY OF LORAIN COUNTY OF LORAIN STATE OF OHIO

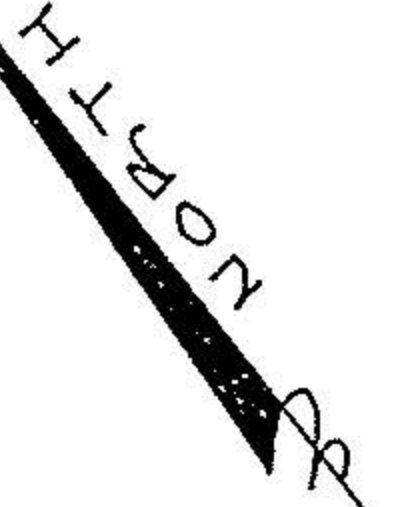
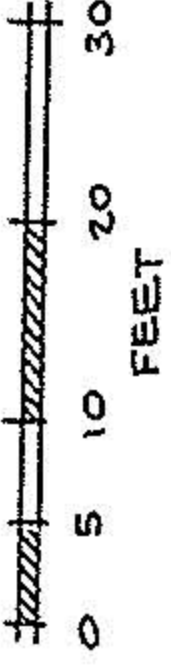
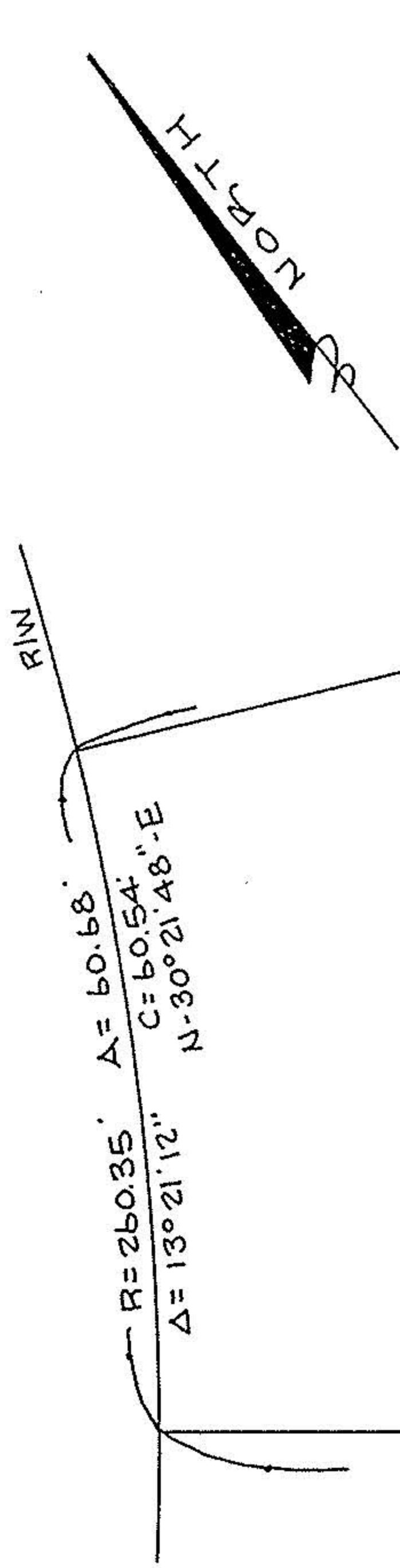
SCALE: 1" = 20' AUG. 29, 1990

WHISPERING PINES PLACE

PREPARED BY

KS ASSOCIATES INC.
ENGINEERS SURVEYORS

David L. Elwell
REG. SURV. NO. 6333



150.29' 8
115.29' 9
132.14' 10
192.14'

(02-01-003-263-063)

WILLIAM E. MOSER
D.V. 1332 P. 498
(0.2095 A.)

APPROVED BY THE LORAIN CITY PLANNING COMMISSION
NO PLAT REQUIRED
SECRETARY LORAIN CITY PLANNING COMMISSION

19295

APPROVED
LORAIN CO.
MAP DEPT.
DATE 2-28-91
PAGE 2-01-003M
BY CAROLYN
FRANCIS
VOID # 19295
AFTER

N-40° 58' 21" E 90.85'

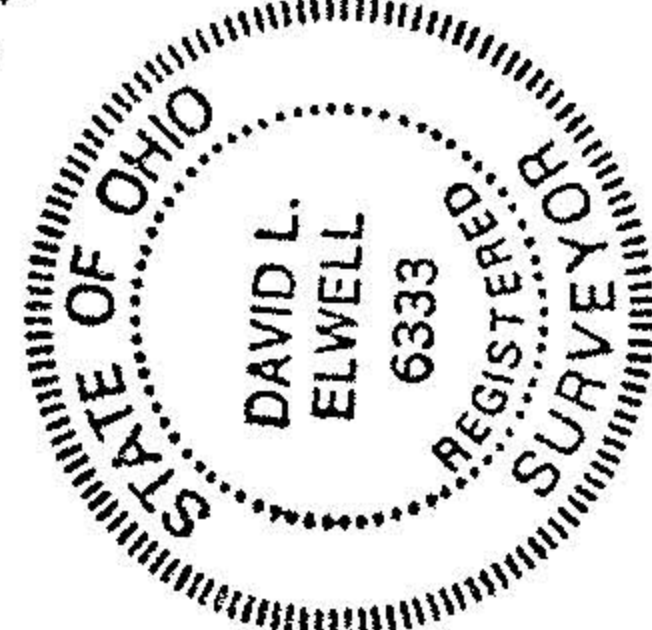
1132.95 S.F. - 0.0260 AC.

S-25° 20' 25" W 92.56'

DONALD M. WRATT
D.V. 1383 P. 750
P.C.L. NO. 3

N-52° 51' 36" E

108.61'



(02-01-003-263-080)