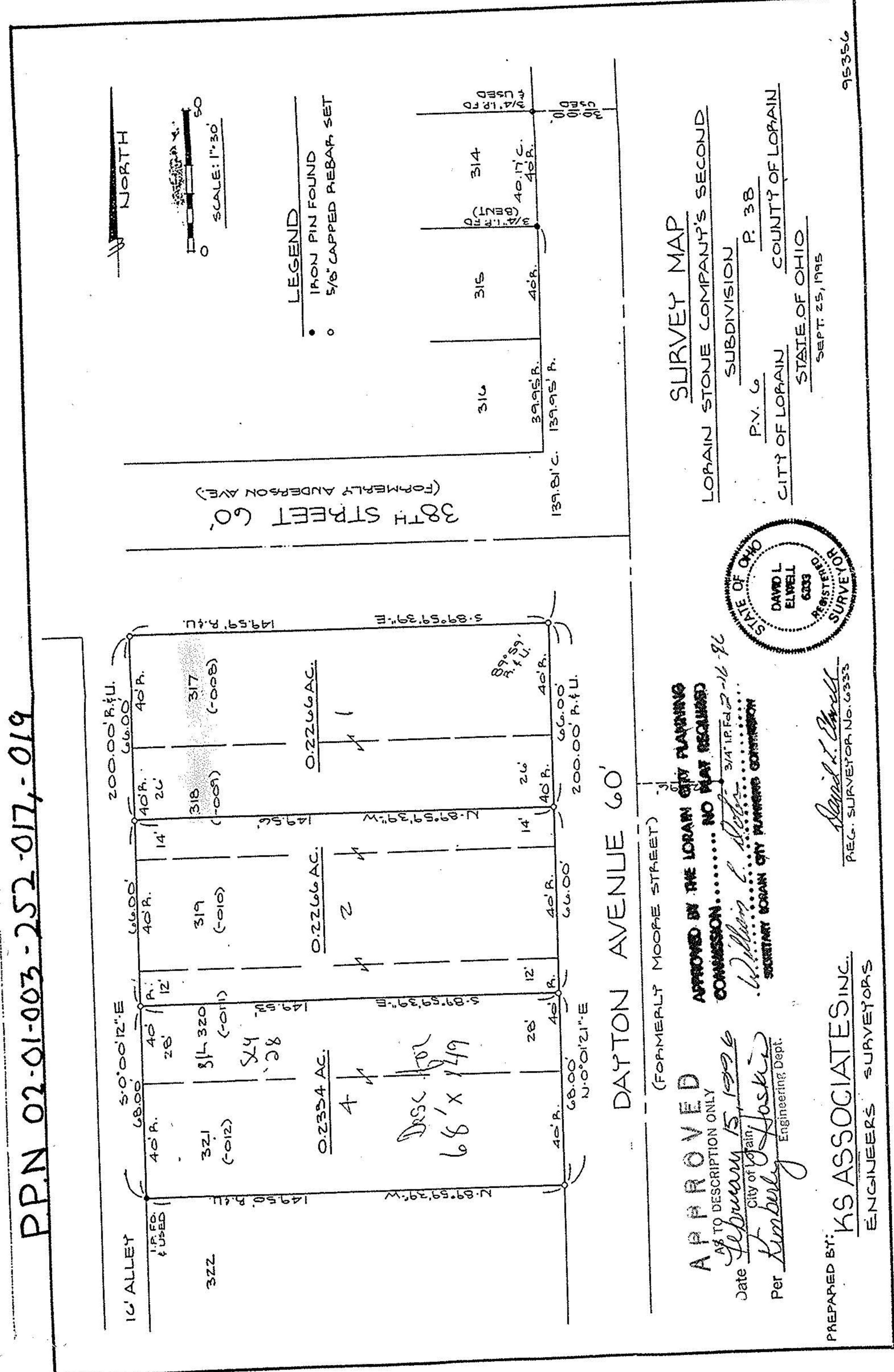


#21684
 APPROVED LORAIN CO. MAP DEPT
 DATE 2-27-96
 PAGE 2-01-003K
 BY CAROLYN FRANCIS
 #21684

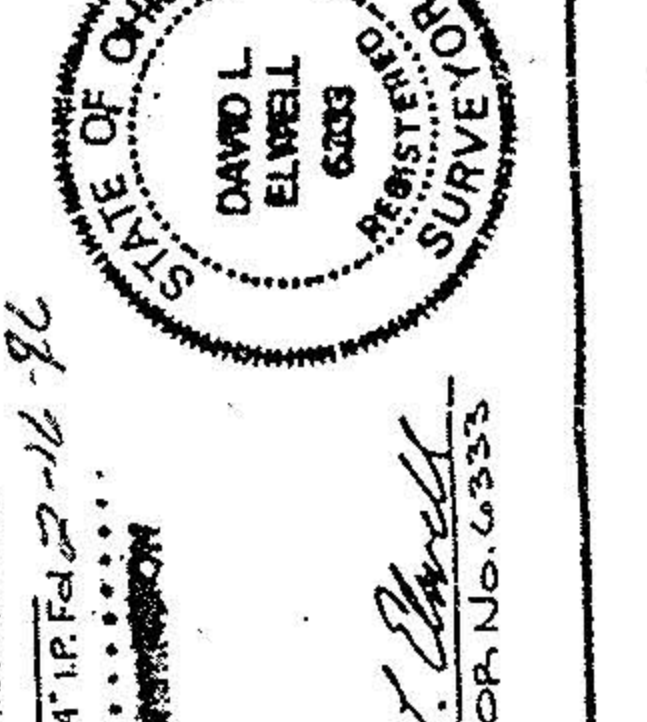
SURVEY MAP
 LORAIN STONE COMPANY'S SECOND SUBDIVISION
 P. 38
 CITY OF LORAIN COUNTY OF LORAIN
 STATE OF OHIO
 SEPT. 25, 1995



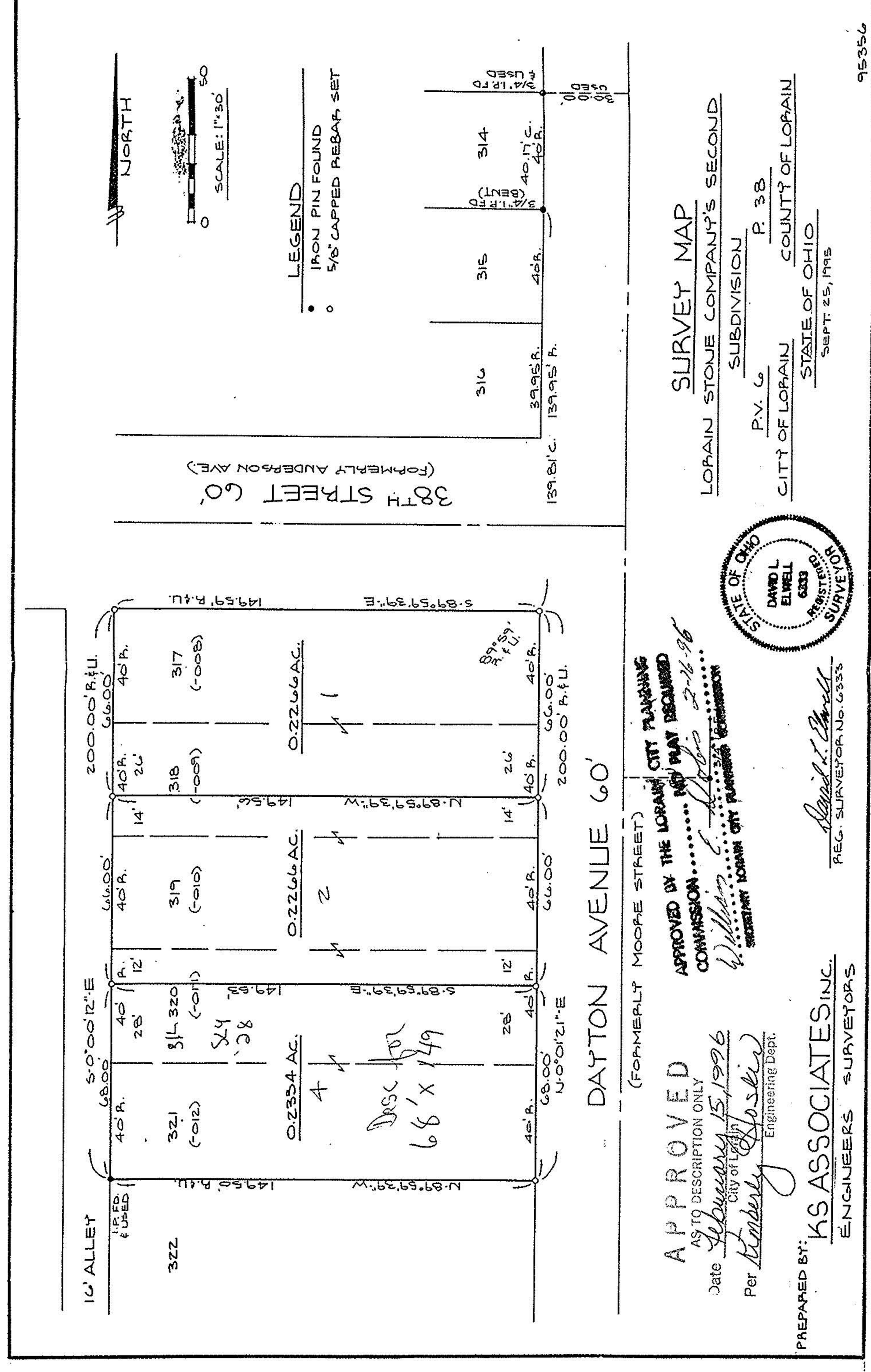
APPROVED BY THE LORAIN CITY PLANNING COMMISSION... NO PLAN REQUIRED
 Date February 15, 1996
 City of Lorain
 Per Kimberly Hoskins, Engineering Dept.
 PREPARED BY: **KS ASSOCIATES INC.** ENGINEERS SURVEYORS
 REG. SURVEYOR NO. 6333



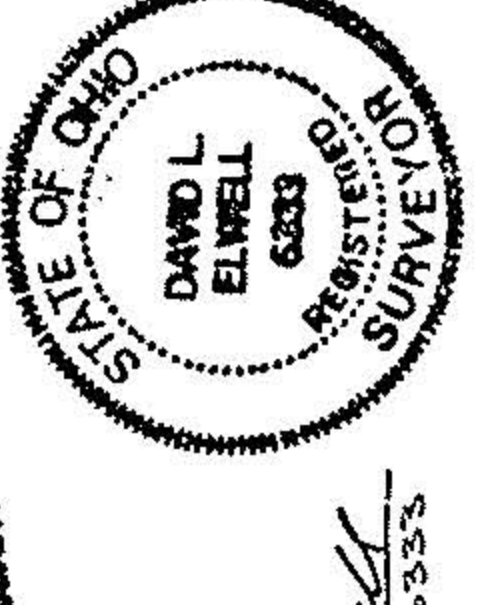
SURVEY MAP
 LORAIN STONE COMPANY'S SECOND SUBDIVISION
 P. 38
 CITY OF LORAIN COUNTY OF LORAIN
 STATE OF OHIO
 SEPT. 25, 1995



APPROVED BY THE LORAIN CITY PLANNING COMMISSION... NO PLAN REQUIRED
 Date February 15, 1996
 City of Lorain
 Per Kimberly Hoskins, Engineering Dept.
 PREPARED BY: **KS ASSOCIATES INC.** ENGINEERS SURVEYORS
 REG. SURVEYOR NO. 6333



SURVEY MAP
 LORAIN STONE COMPANY'S SECOND SUBDIVISION
 P. 38
 CITY OF LORAIN COUNTY OF LORAIN
 STATE OF OHIO
 SEPT. 25, 1995



APPROVED BY THE LORAIN CITY PLANNING COMMISSION... NO PLAN REQUIRED
 Date February 15, 1996
 City of Lorain
 Per Kimberly Hoskins, Engineering Dept.
 PREPARED BY: **KS ASSOCIATES INC.** ENGINEERS SURVEYORS
 REG. SURVEYOR NO. 6333

P.P.N. 02-01-003-252-017-019